

Manual

Online licensing



Table of Contents

1 GRIDVIS 7.52

2 GRIDVIS 7.57

In this tutorial you will learn how to license a project with the Expert, Standard and Essentials editions.

Contents

- ▪ Open the Licensing Wizard
- ▪ Log on to the license server
- ▪ Enter the new license key / add new license
- ▪ Licensing a project with a new license

As of 1/1/2021, the new GridVis editions Expert, Standard and Essentials will replace the previous editions. You can find out more about the range of functions at www.gridvis.de.

If an Internet connection is available, you can license the new editions directly from the GridVis desktop.

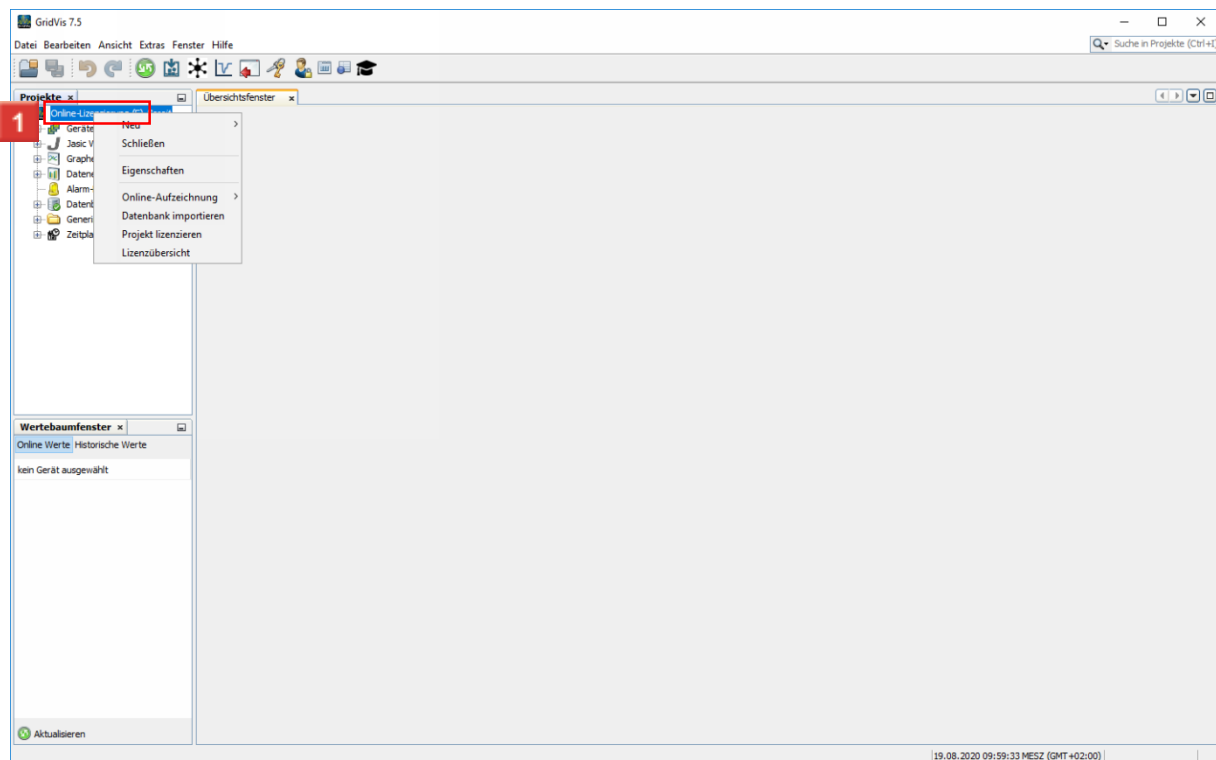
Multi-step offline licensing is described in a separate tutorial.

To manage licenses for the new editions, create a Janitza account (Janitza ID). As an option, you can create a Janitza ID with your Google account.

With the new licensing model, licensing is no longer done for each installation of GridVis, but instead for each project. This means a project which has already been licensed can be used in any GridVis installation without further licensing.

This tutorial shows how to add a new license to a Janitza ID and use it to license a project using online licensing. This process must be started from the GridVis desktop via the respective project.

1 GridVis 7.5



1 With the mouse, right-click on the desired project.

i If you are connected to the Internet and have an open, unlicensed project, the online Licensing Wizard opens automatically.

2 Click the **Licensing Project** menu item.

✓ Licensing Wizard online licensing ×

Licensing GridVis project

The project **online licensing** was not licensed. Please log in with your Janitza ID to license the project.


Sign in to Janitza ID

1

2

[Forgot Password](#)

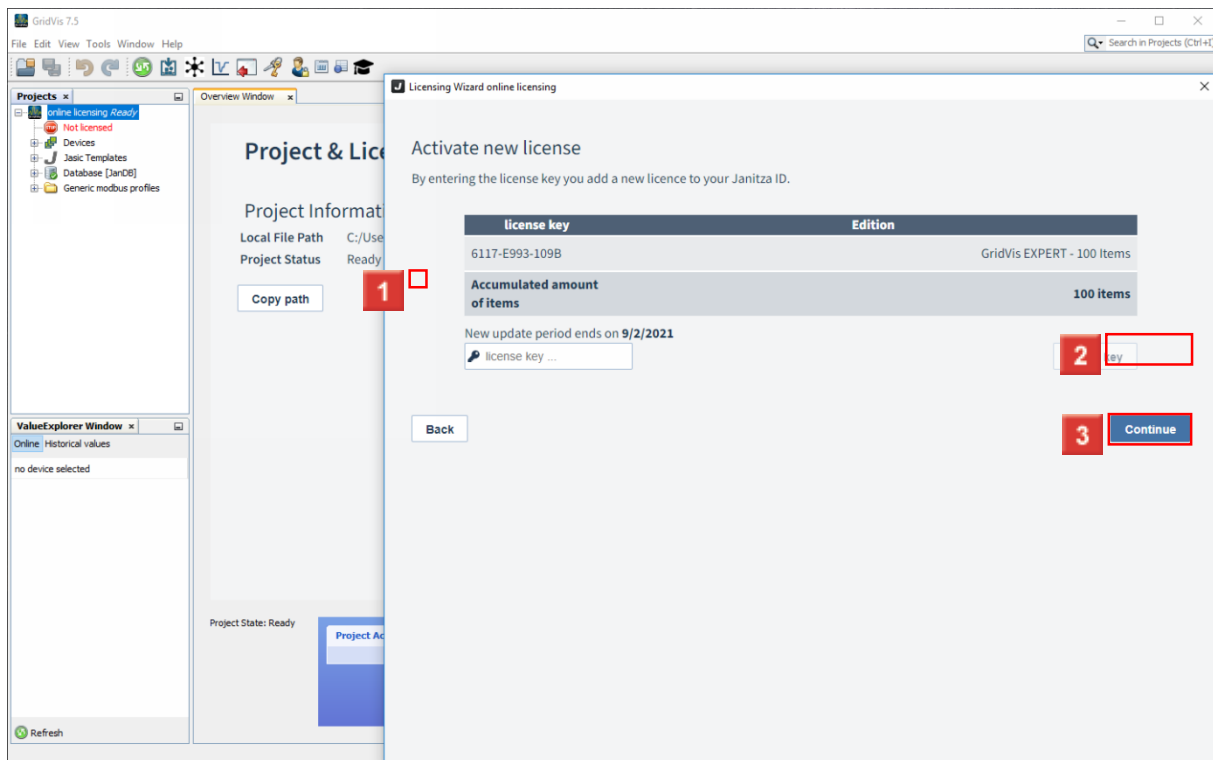
You do not have a Janitza account yet?

 Offline licensing required?
[Activate now without Internet connection](#)

1 Enter your Janitza ID access data.

- i If necessary create a new Janitza account by clicking the Create Account button.
- i Optional: Sign in with your Google account.

2 Click the **Log in** button.



1 Click the **Submit new license key** radiobutton.

- i Optionally you can also use the free Essentials edition (as of 1/1/2021). For more information, see <https://www.gridvis.com/>
- i If your Janitza ID already contains licenses with a sufficient number of items, you can also select it to license the project.

2 Click the **Continue** button.

3 Click the **Apply key** button.

- i You can find the license key on your delivery note.

4 Click the **Continue** button.

- i Optionally, you can activate additional licenses.

Licensing Wizard online licensing

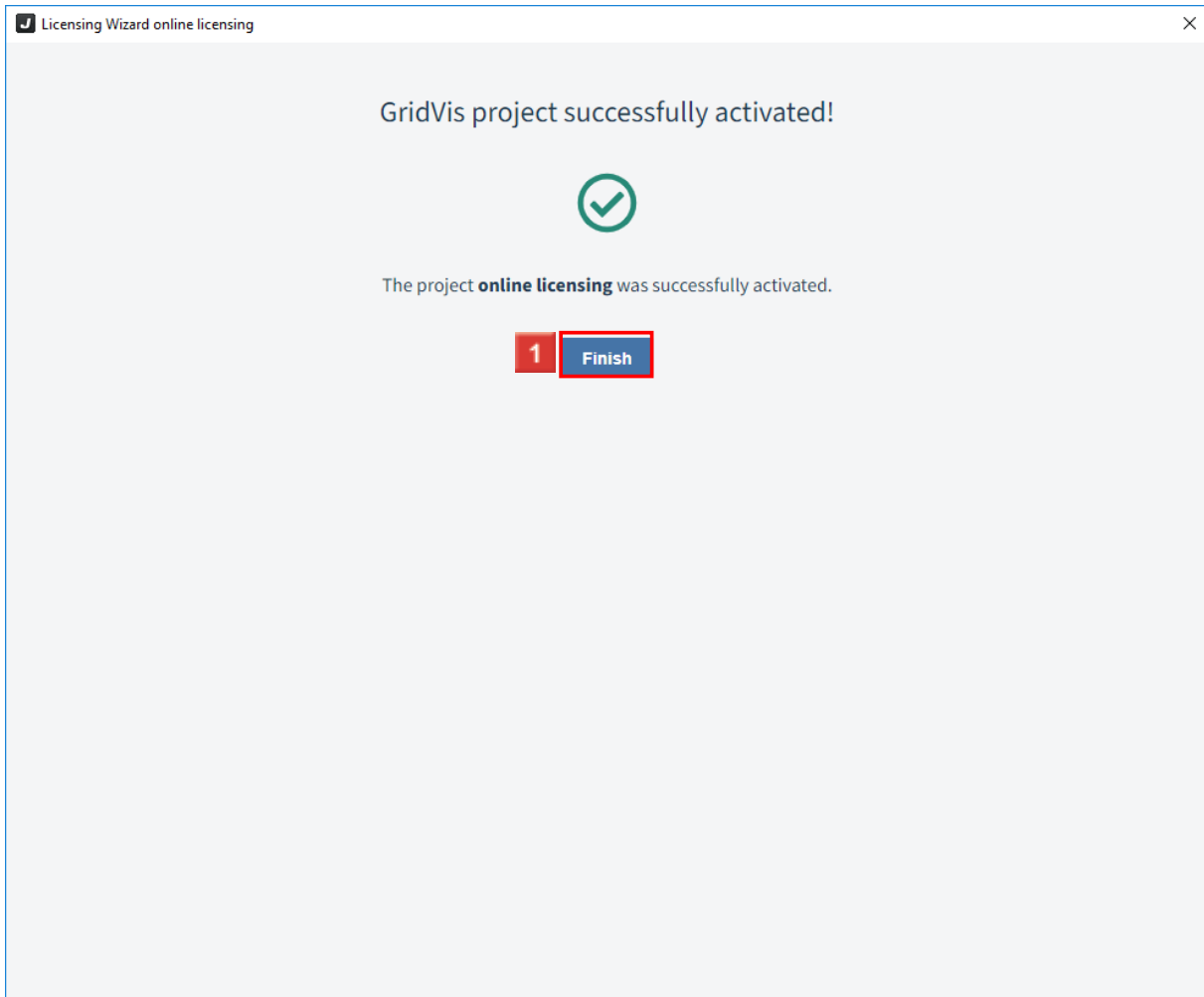
Name for new license

Please name the new license.

1 License name

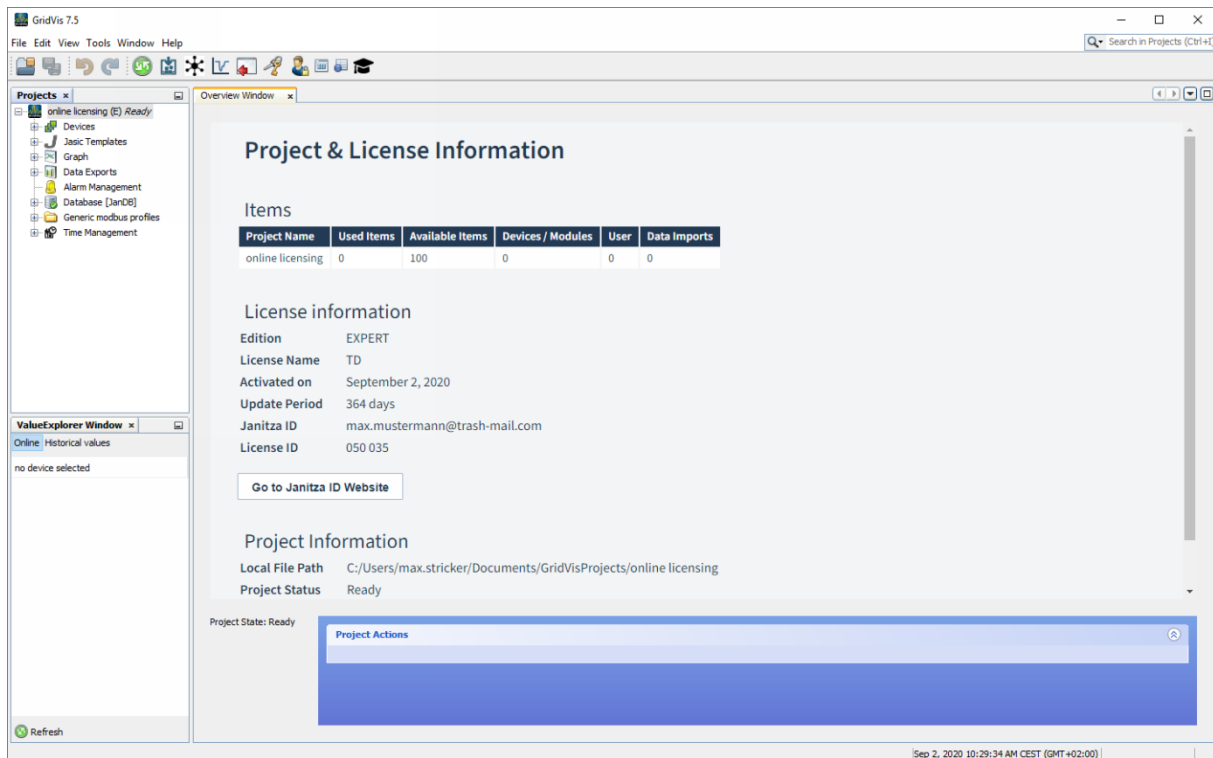
Back Continue

- 1 Click the **License Name** input field.
- 2 Enter a name for the license (optional) and click the **Continue** button.



1 Click the **Finish** button.

2 GridVis 7.5



Please enter your text here.

Online licensing

If an Internet connection is available, you can log in to the Janitza ID server directly from the GridVis desktop and can thus complete the entire process in the GridVis application.

New editions

As of 1/1/2021, the new GridVis editions Expert, Standard and Essentials will replace the previous editions Ultimate, Service, Professional and Basic. You can find out more about the range of functions at www.gridvis.com.

Project-related licensing

With the new editions, licensing is no longer done for each installation of GridVis, but instead for each project. This means a project which has already been licensed can be used in any GridVis installation without further licensing.

Offline licensing

Offline licensing takes place in several steps via the GridVis desktop and the ID server.

The ID server must be accessed via the Internet.