

# Manual

Image widget



# Table of Contents

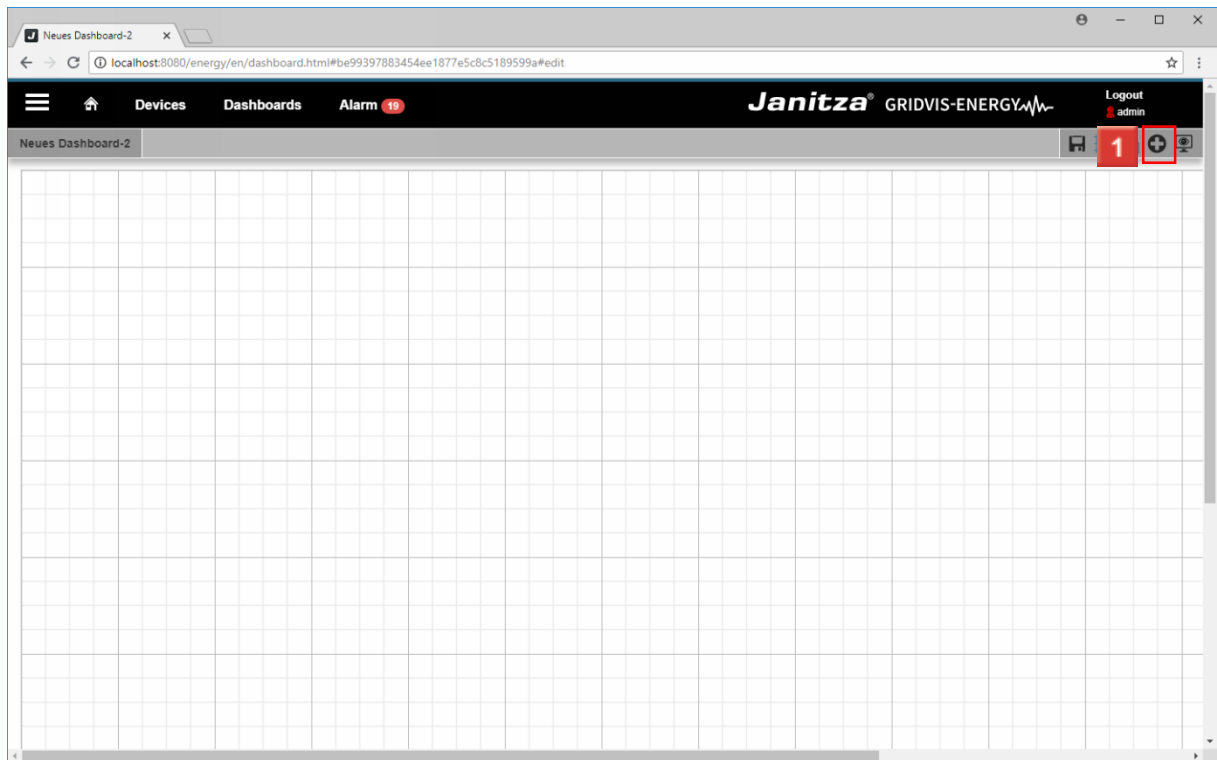
- 1 ADDING AND CONFIGURING A WIDGET .....2
- 2 SUMMARY .....7

These instructions explain how to use files from the image database of GridVis Energy in a dashboard.

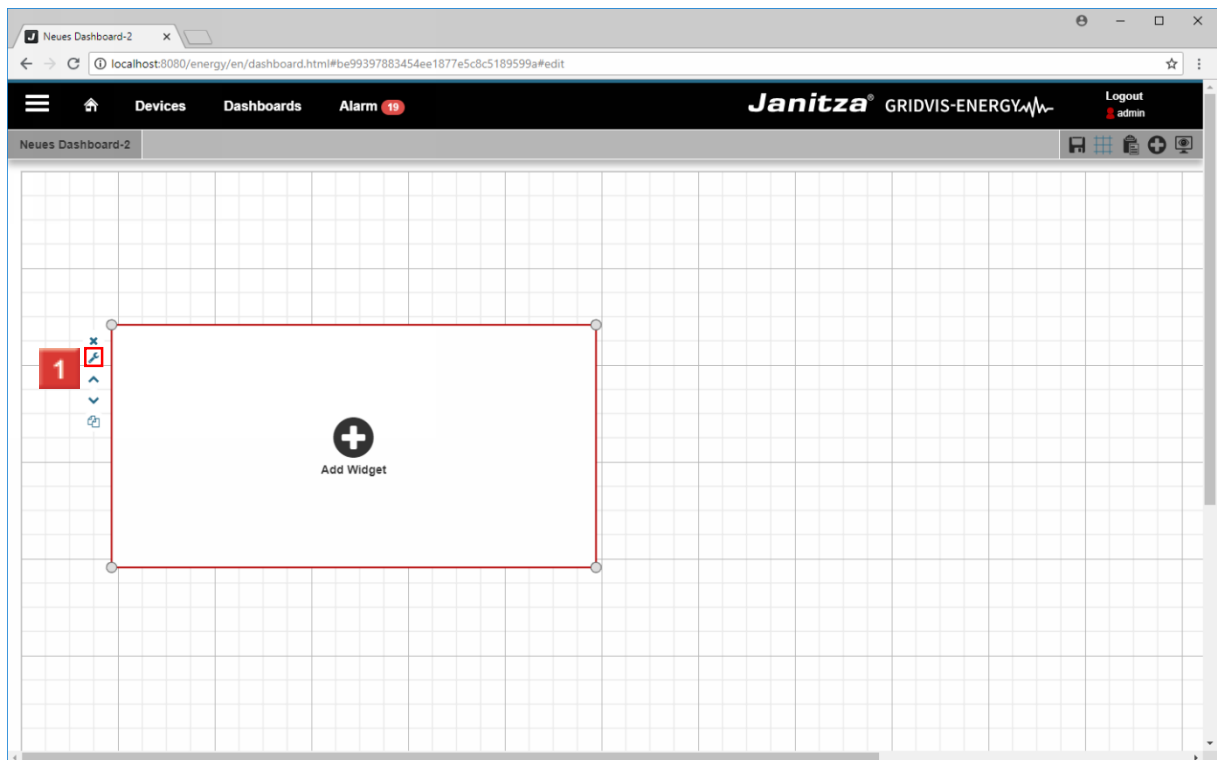
#### Content

- ▪ Adding a new visualization ( of type **image**) in a dashboard.
- ▪ Integrating an image from the database.
- 
- 
-

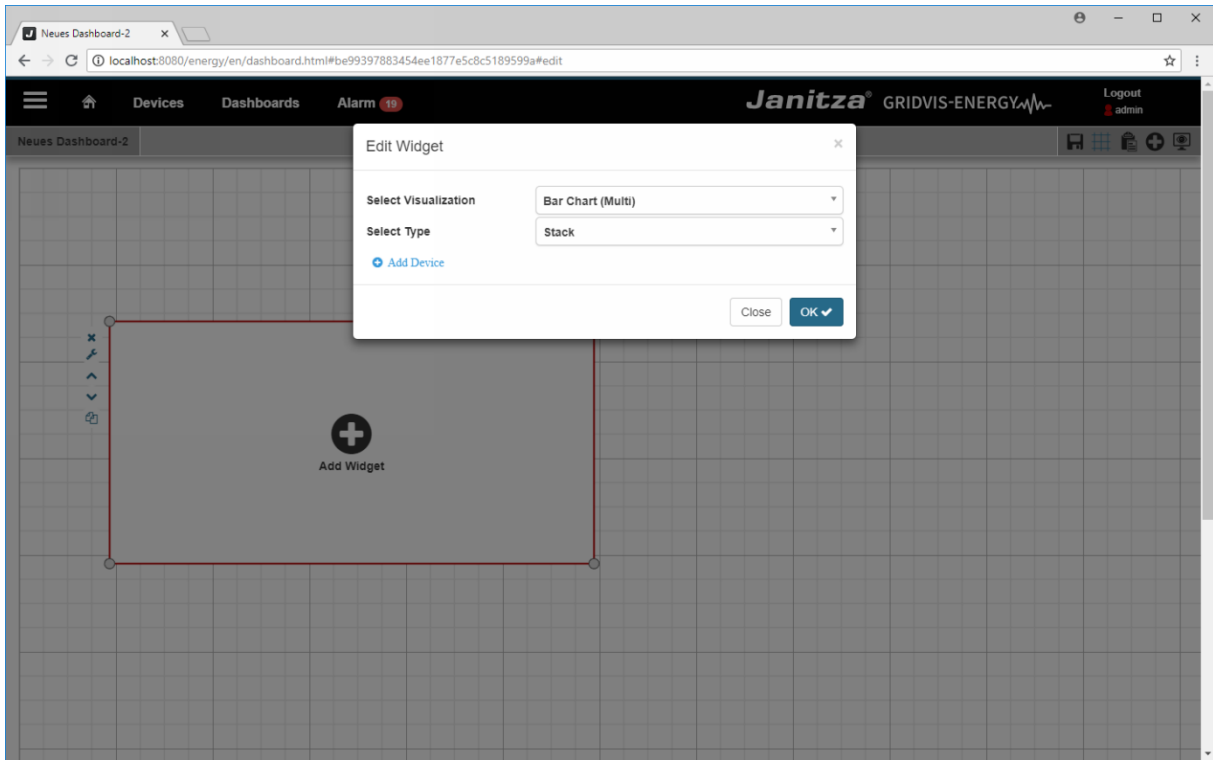
## 1 Adding and configuring a widget



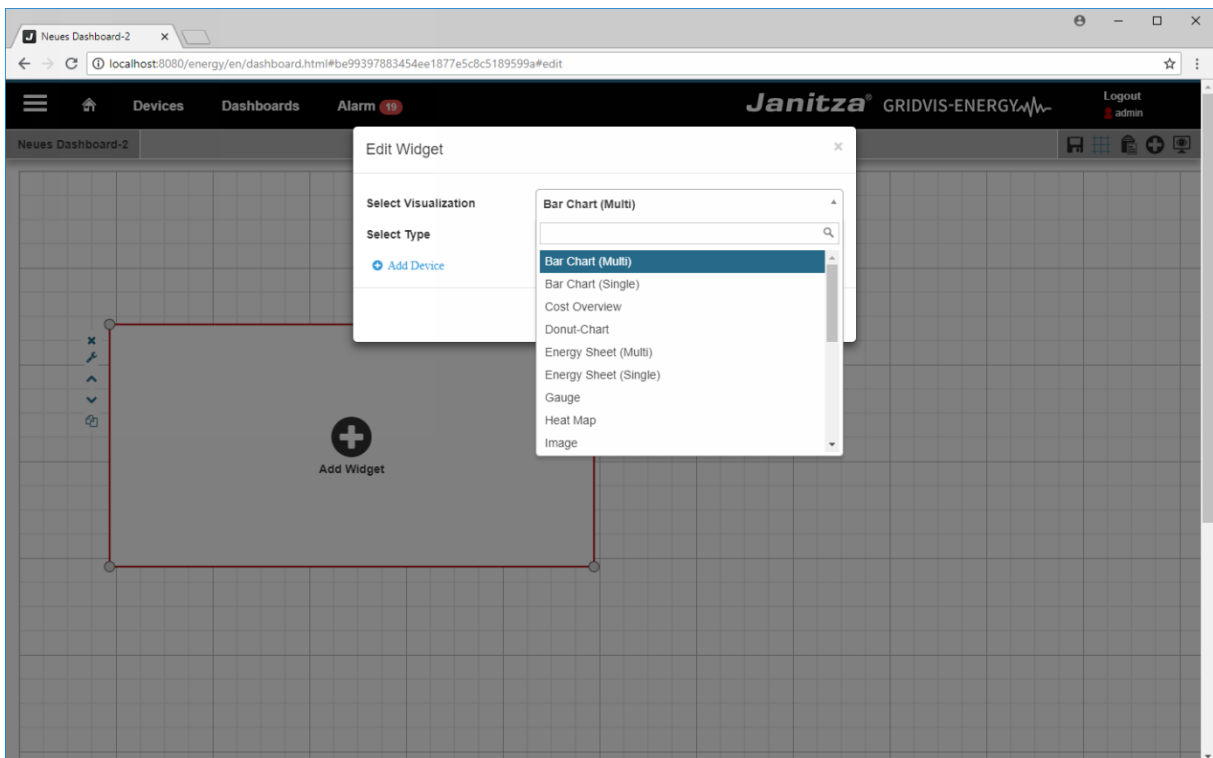
1 Click the **Add visualization** button.



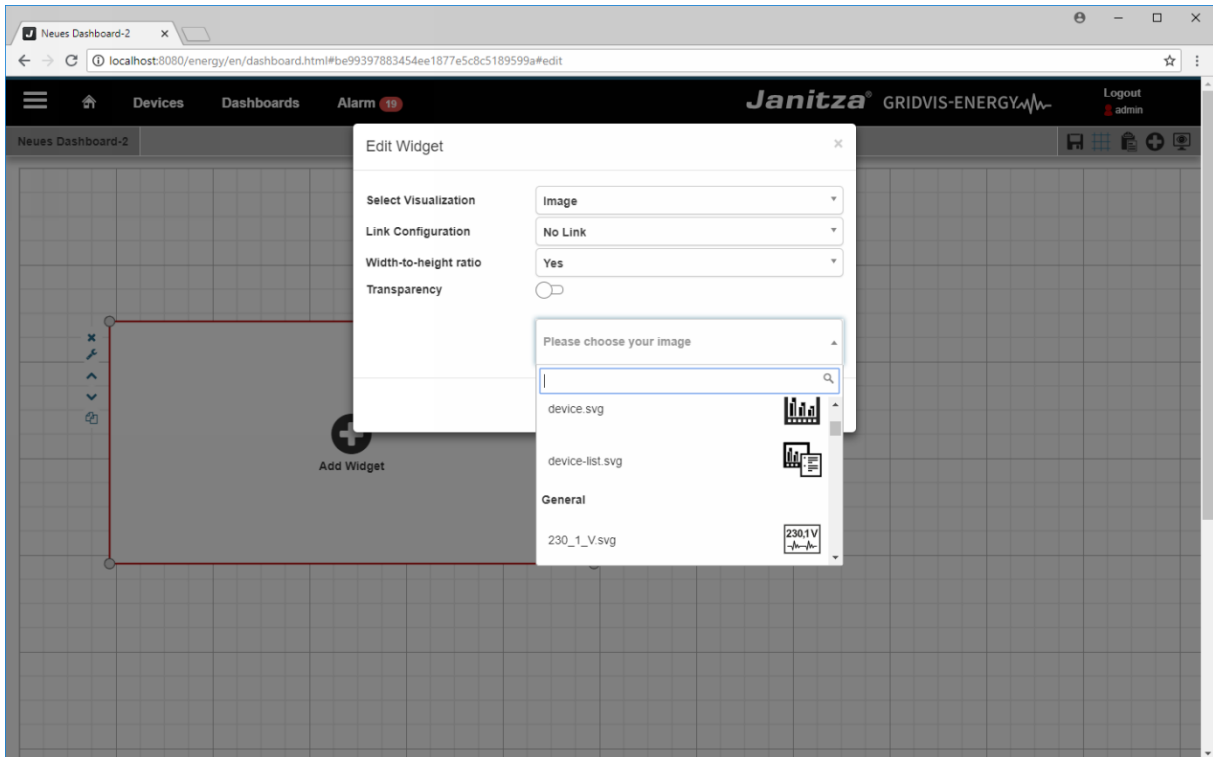
1 Click the **edit visualization** button.



1 Click the **Select Visualization** dropdown button.  
Click the **Select Visualization** dropdown button.



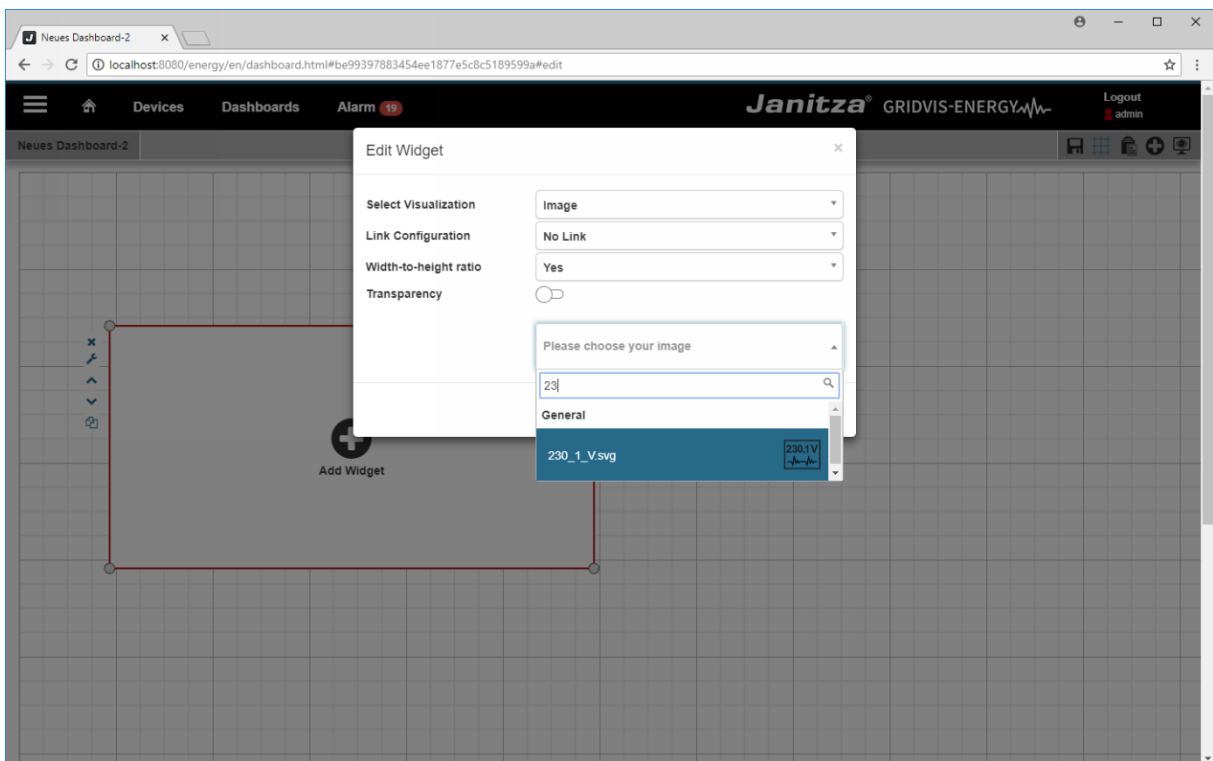
1 Click the **Image** list item.  
Click the **Image** list item.



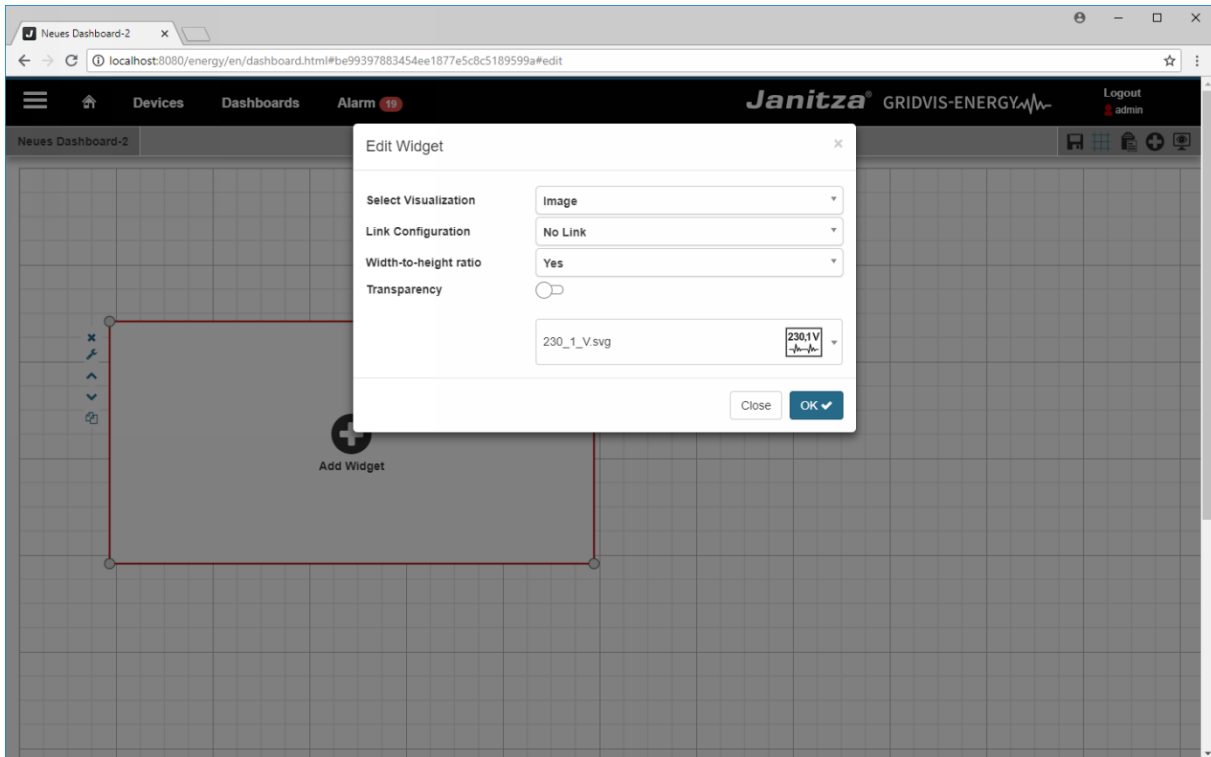
1 Click the **choose image** dropdown button.

Click the **choose image** dropdown button.

2 You can enter the name of the image you want to add to filter the list.

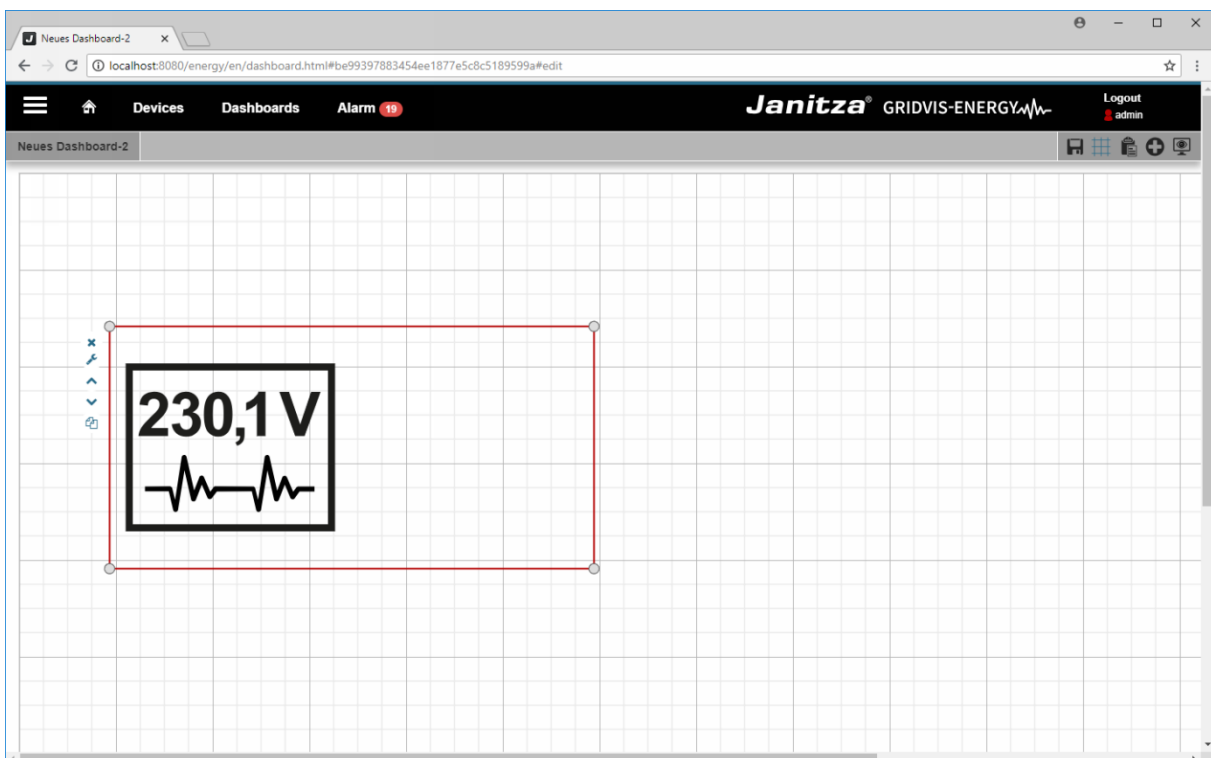


1 Select the image from the list.



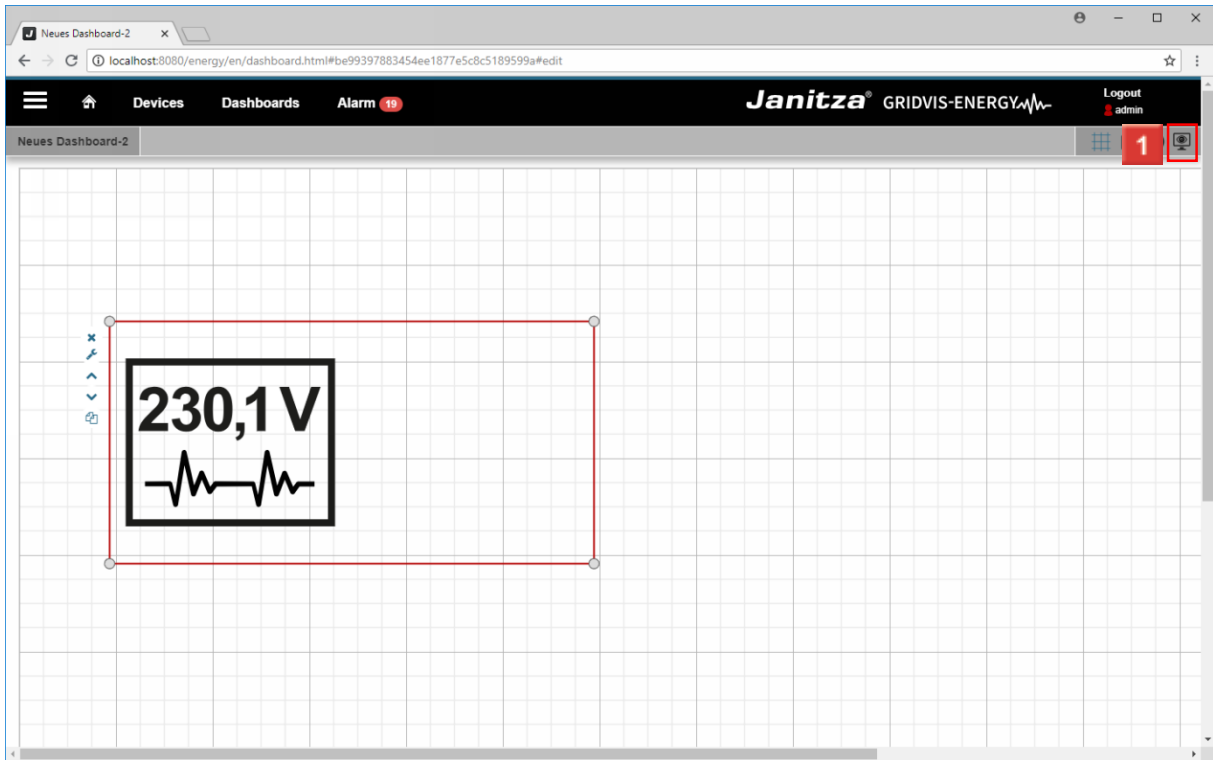
1 Click the **OK** button.

Click the **OK** button.

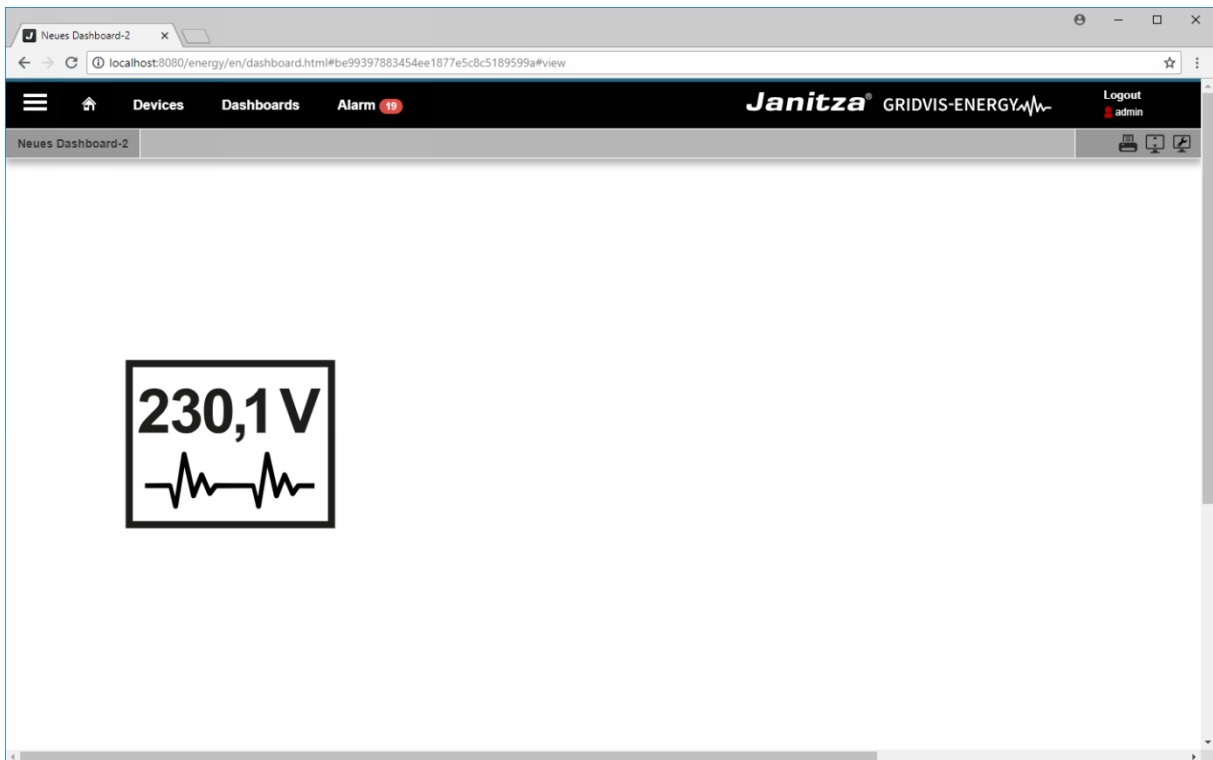


1 Click the **Save** button.

Click the **Save** button.



1 Click the **View dashboard** button.





## 2 Summary

Please enter your text here.

Use via a widget

You can add the images from the database to your dashboards using the visualization type Image.

Transparency

You can set the visualization to transparent if you only want to add a link to a specific area of the dashboard without displaying an image.

Images as a link

You can assign a link to another dashboard or an external page to each added image.