

# Manual

Line Chart



# Table of Contents

- 1 ADD A DASHBOARD.....3
- 2 EDIT DASHBOARD .....5
- 3 ADD VISUALIZATION (WIDGET) .....6
- 4 CONFIGURE LINE CHART .....8

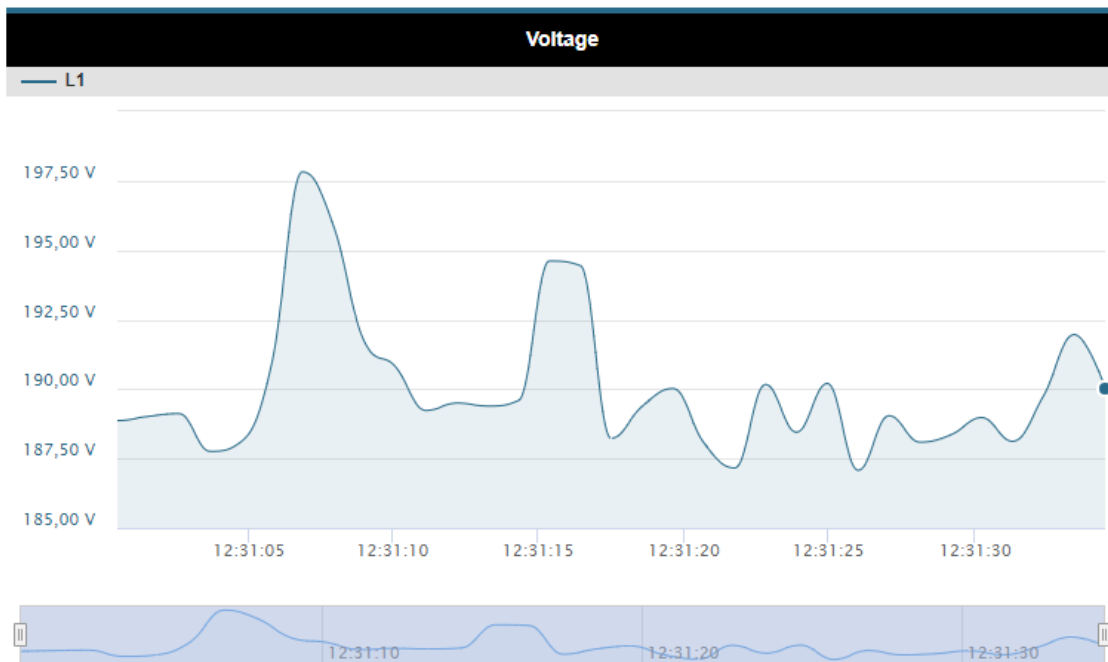
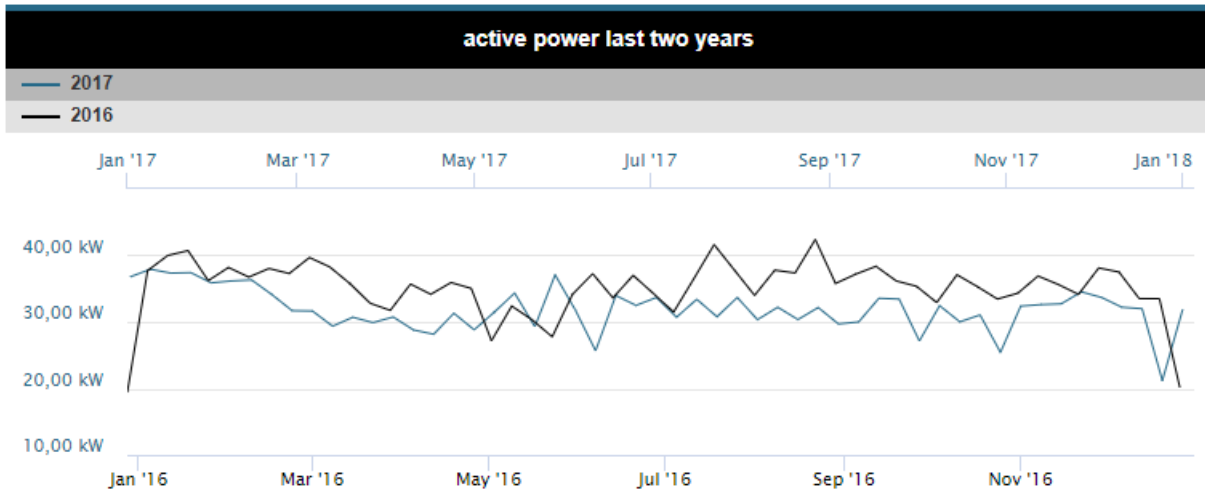
These instructions explain how to handle the line chart widget in the GridVis Energy. The line chart is used here to compare historical data from two time periods.

#### Content

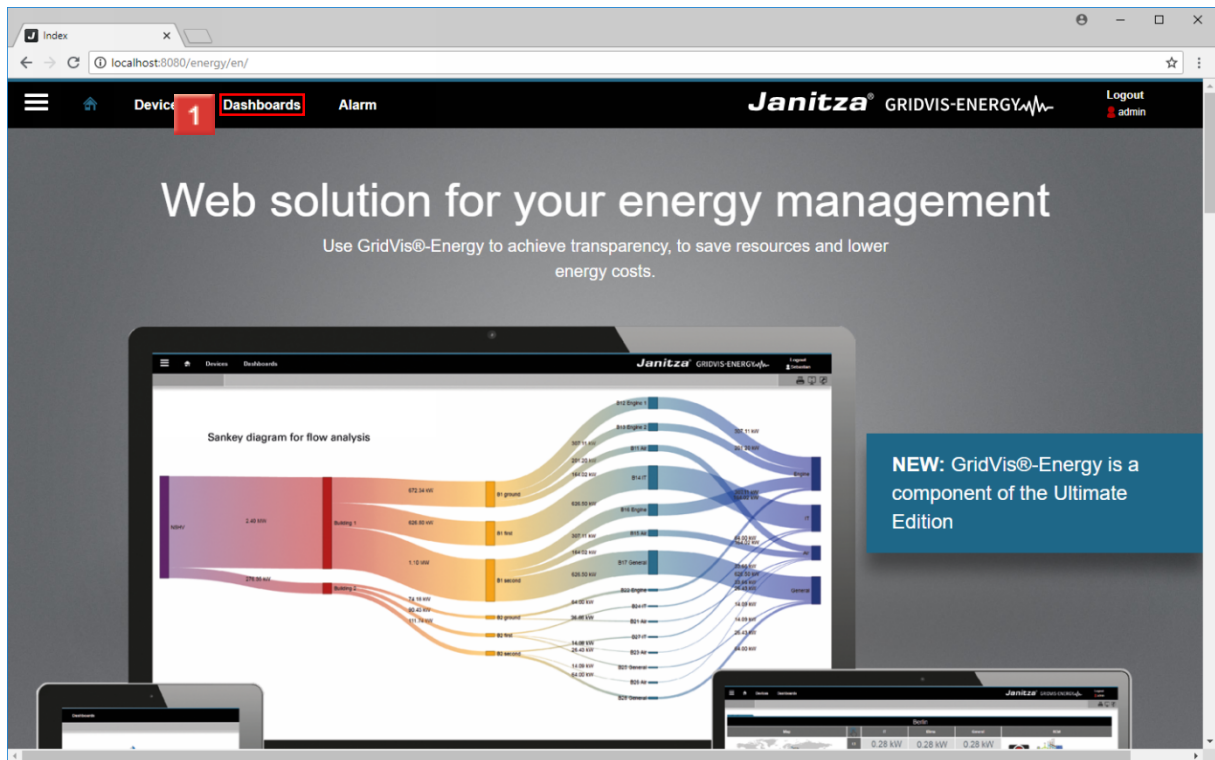
- ▪ Create a new dashboard.
- ▪ Edit dashboard.
- ▪ Add historical data to a line chart.
- ▪ Configure a second time axis.
- 
- 
- The line chart can be displayed as live values or historical data.
  
- The line chart has up to 2 time axes (X-axis) and 4 value axes (Y-axis).
  
- Two time periods can be clearly compared when visualizing historical data.
  
- The layout of the graphs can be adjusted.

*Fig.: Displaying historical data over two different time periods.*

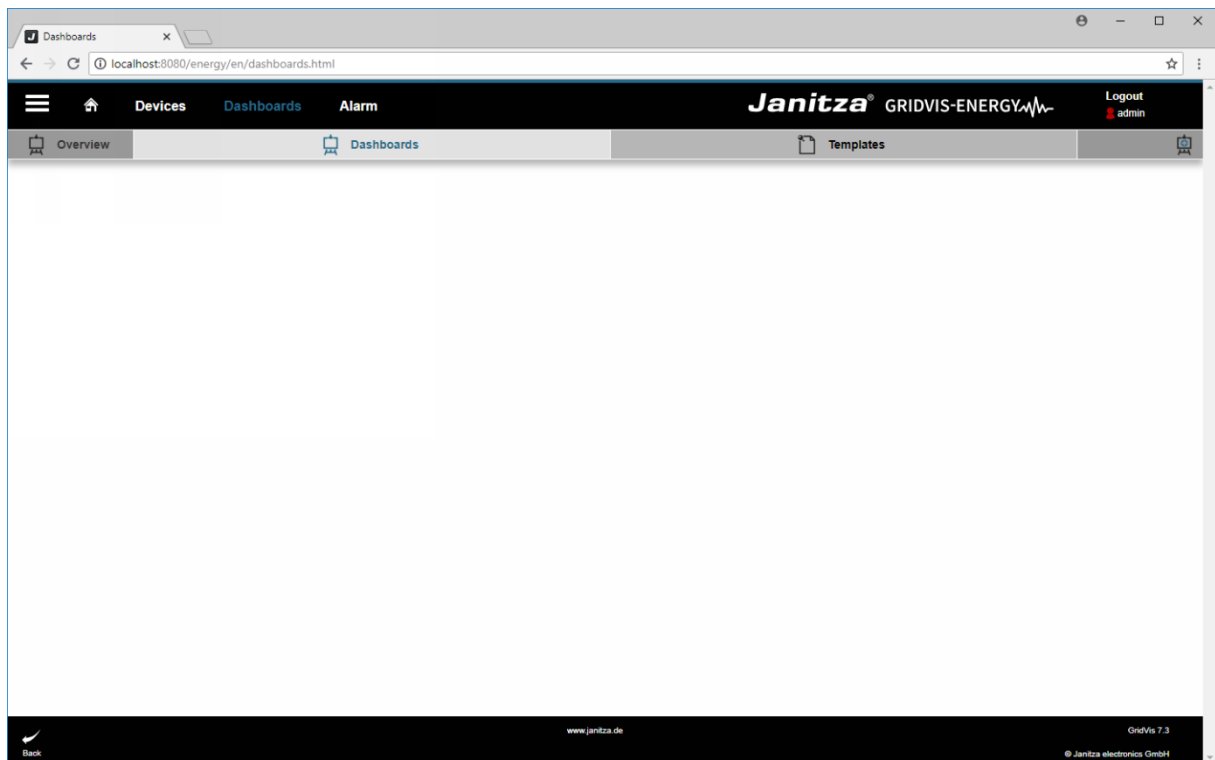
*Fig.: Displaying a live value with an adjusted layout (soft curves and fill function activated).*



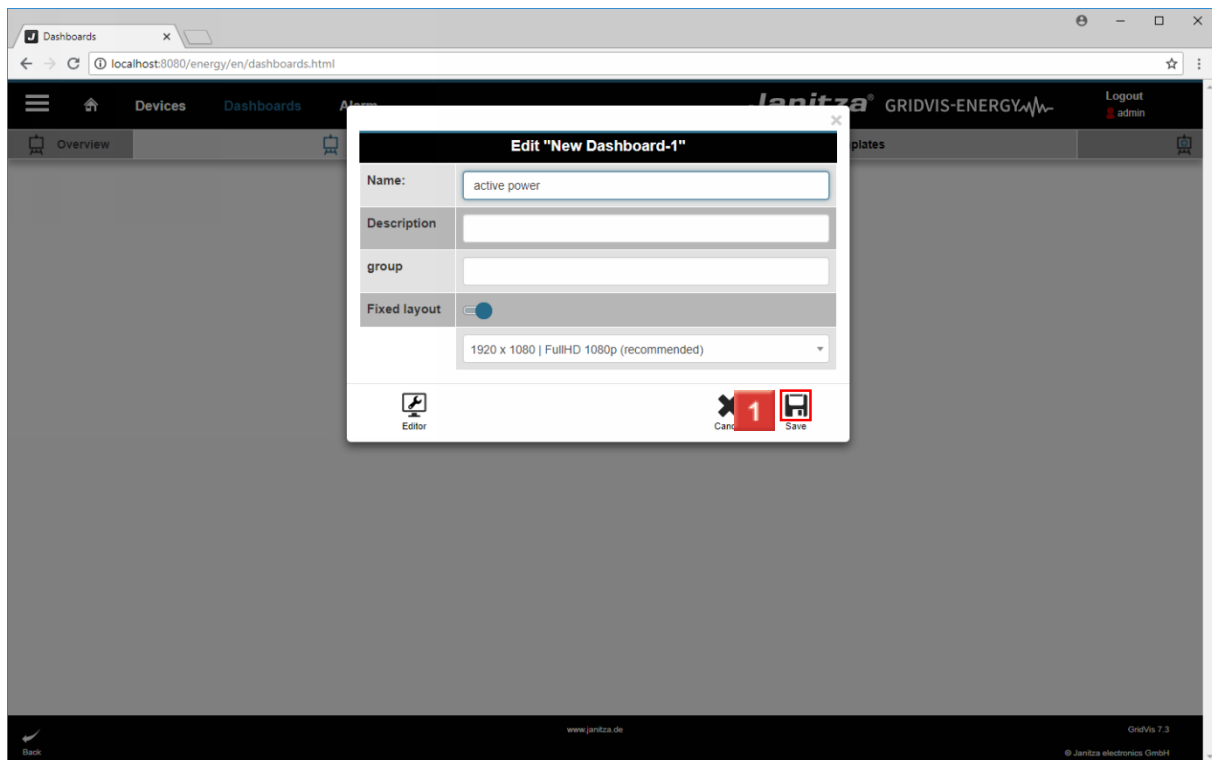
# 1 Add a dashboard



1 Click the **Dashboards** button.



1 Click the **New Dashboard** button.  
Click the **New Dashboard** button.



**1** In this section, a name, description and group is entered for the new dashboard.

You can optionally select a fixed layout here.

Save your entries by clicking the **Save** button.

**i** Dashboards are organized in groups.

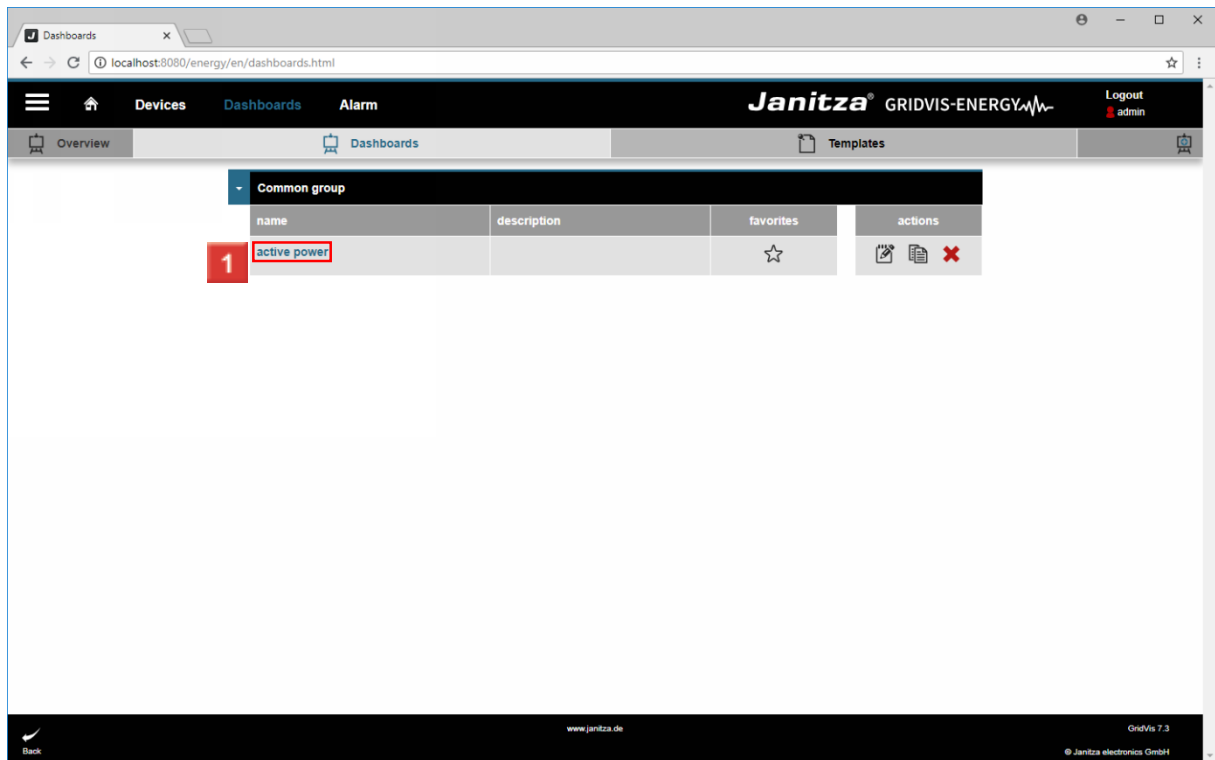
**i**

**i** If no group name is entered, the dashboard is sorted into the general group.

**i**

**i** If a group is entered that does not yet exist, it is automatically created.

## 2 Edit dashboard

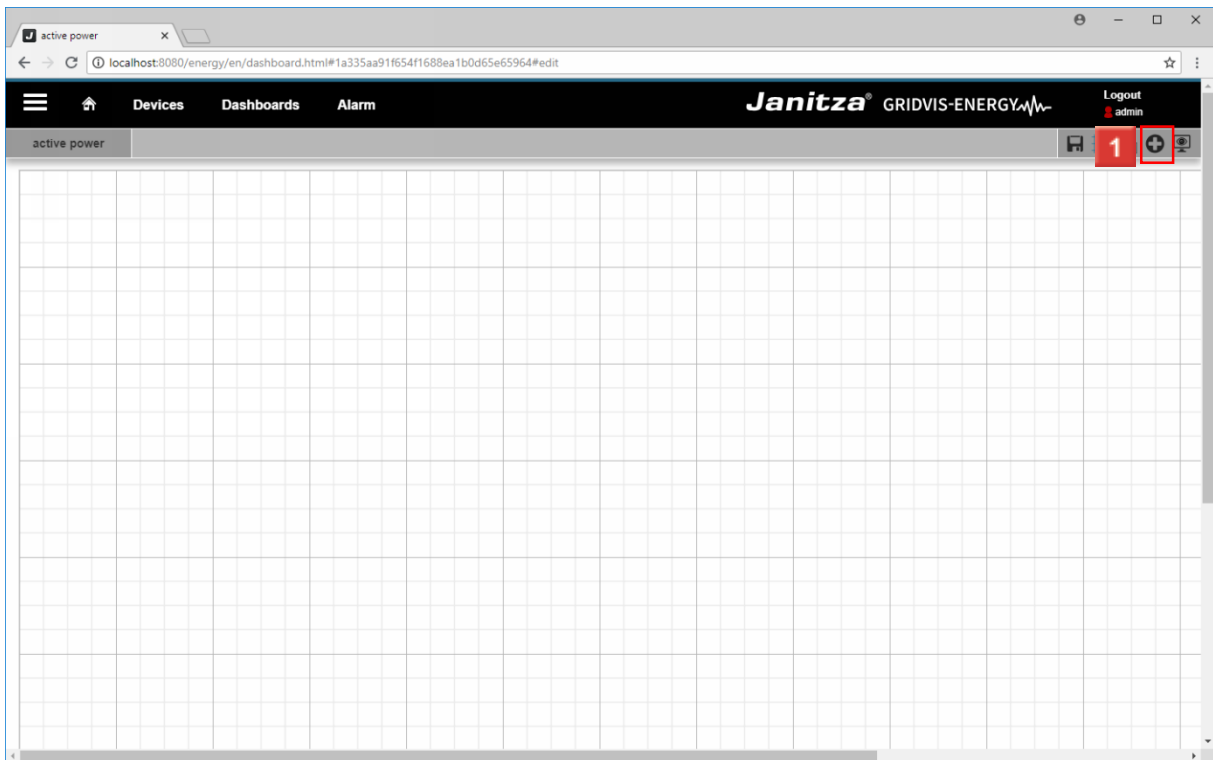


1 Click the name of the dashboard to open it.




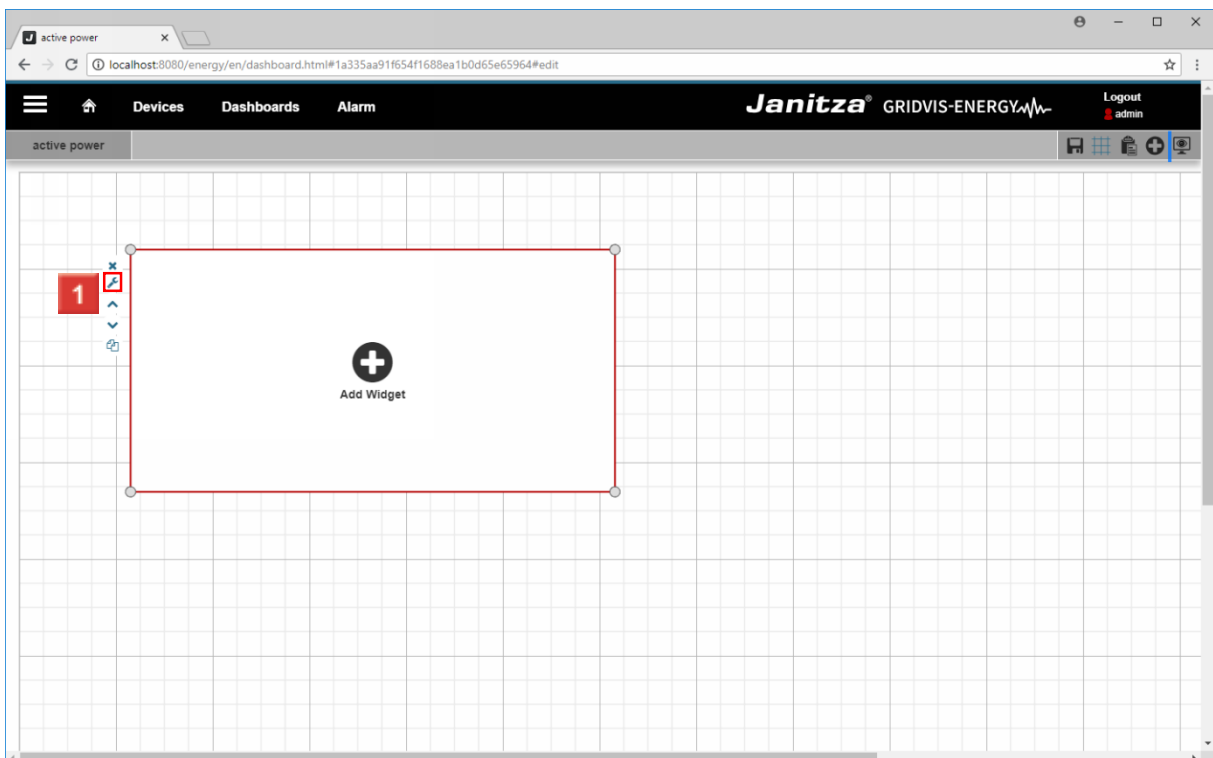
1 Click the **Edit Dashboard** button.  
Click the **Edit Dashboard** button.

### 3 Add visualization (widget)



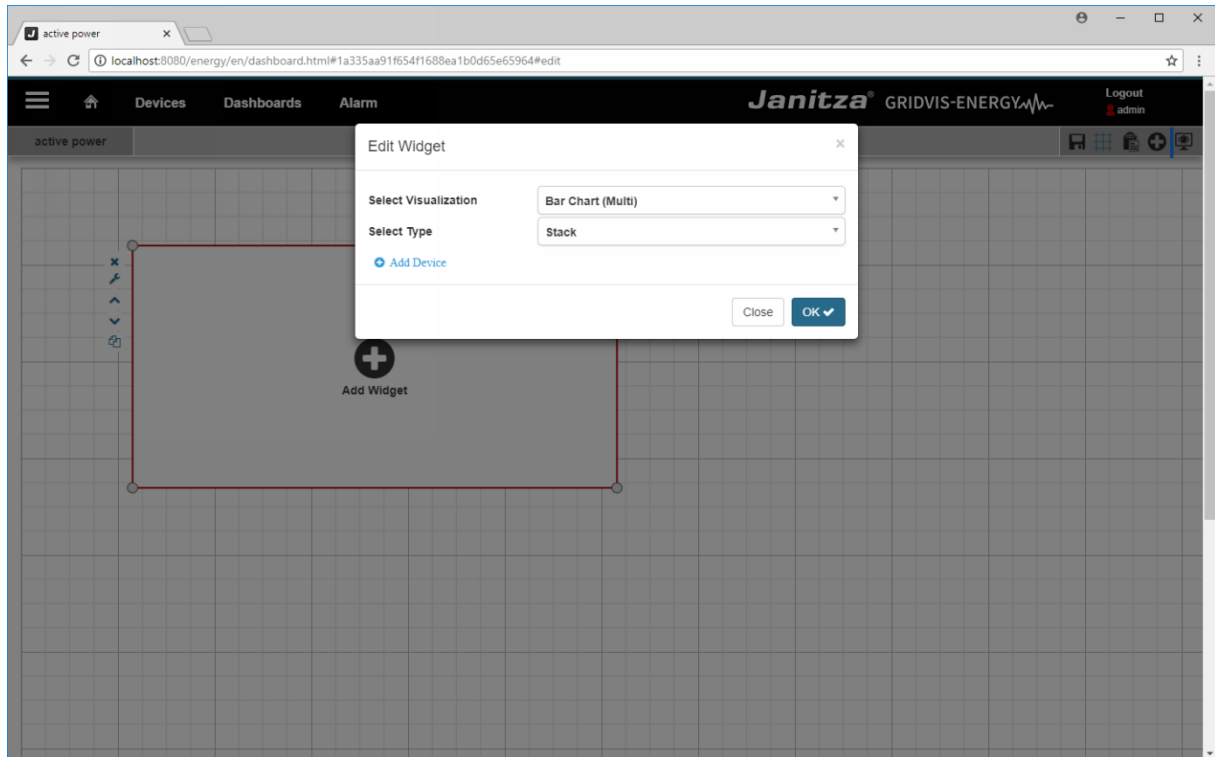
1 Click the **Add visualization** button.

 You can activate/deactivate the grid lines via the Display grid lines button ().

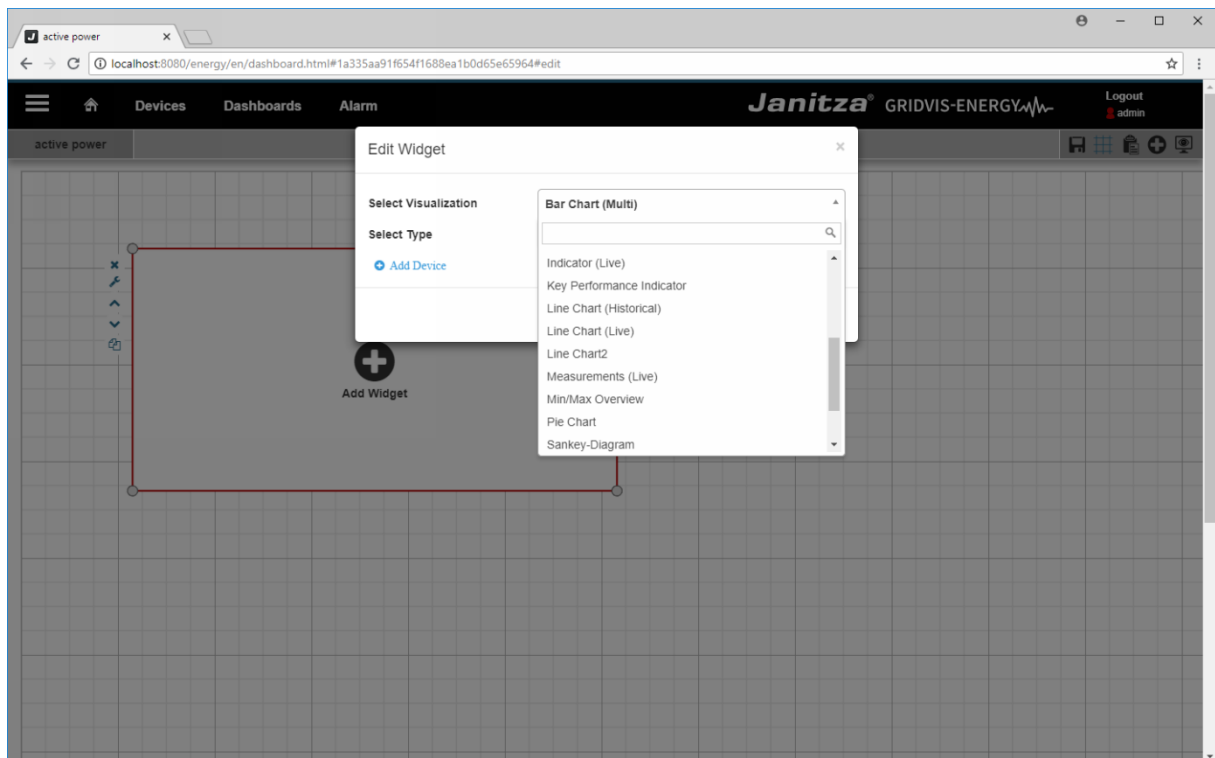


1 Click the **Edit visualization** button.







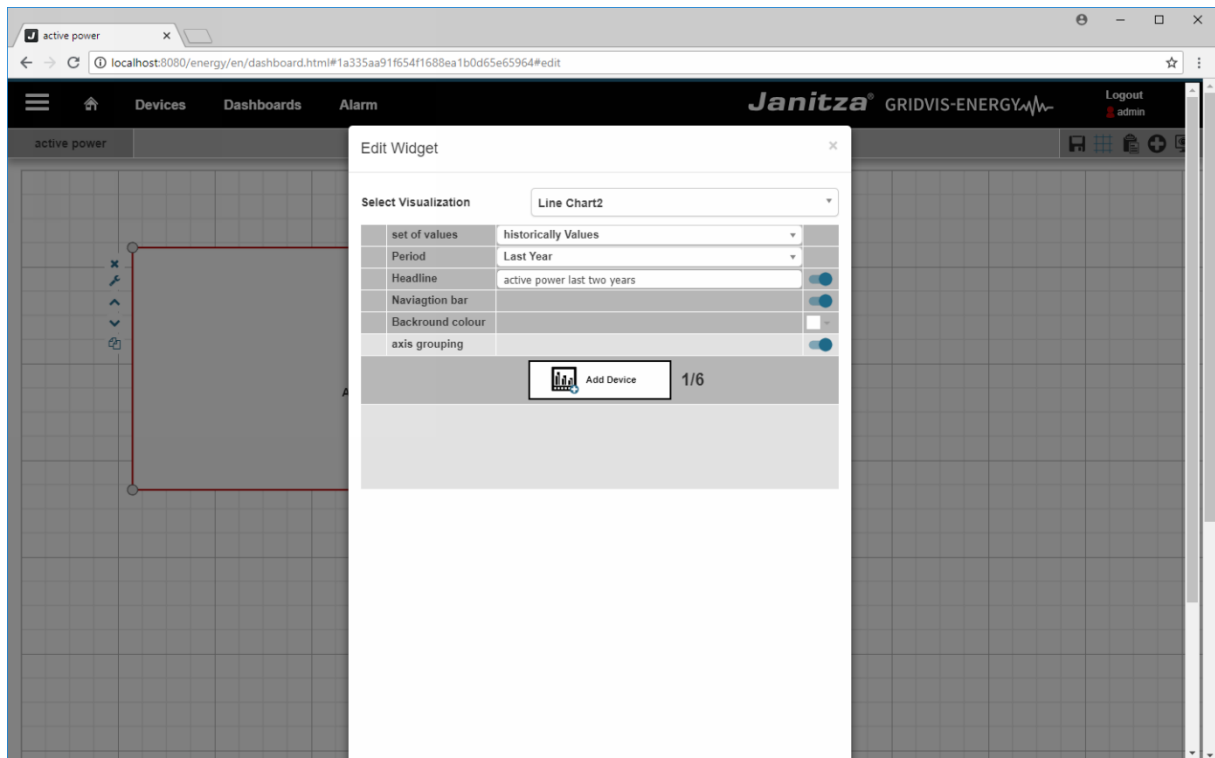
- 1 Click the **Select Visualization** dropdown button.
- 2 Click the **Select Visualization** dropdown button.



- 1 Click the **Line Chart** list item.
- 2 Click the **Line Chart** list item.

## 4 Configure line chart

- 3 Click the  dropdown button.
- 4 Click the  dropdown button.
- 5 Click the **Save** button.
- 6 Click the **Save** button.



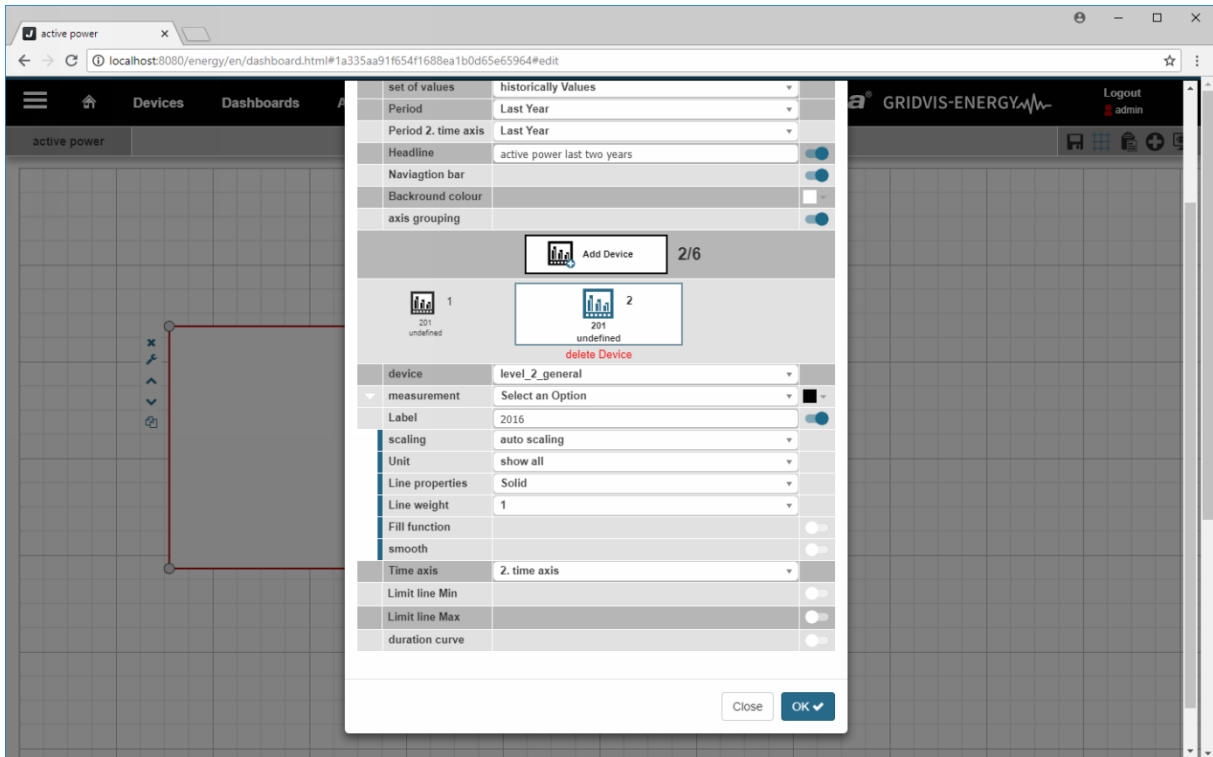
- 1 Click the **Add device** button to add a measured value to the chart.
- 2 Click the **Add Device** button.

The screenshot shows the 'Edit Widget' dialog for a Line Chart. The 'Time axis' dropdown is set to '1. time axis'. The 'Add Device' button is highlighted with a red box. The dialog includes various configuration options such as 'set of values', 'Period', 'Headline', 'Navigation bar', 'Background colour', 'axis grouping', 'device', 'measurement', 'Label', 'scaling', 'Unit', 'Line properties', 'Line weight', 'Fill function', 'smooth', 'Limit line Min', and 'Limit line Max'.

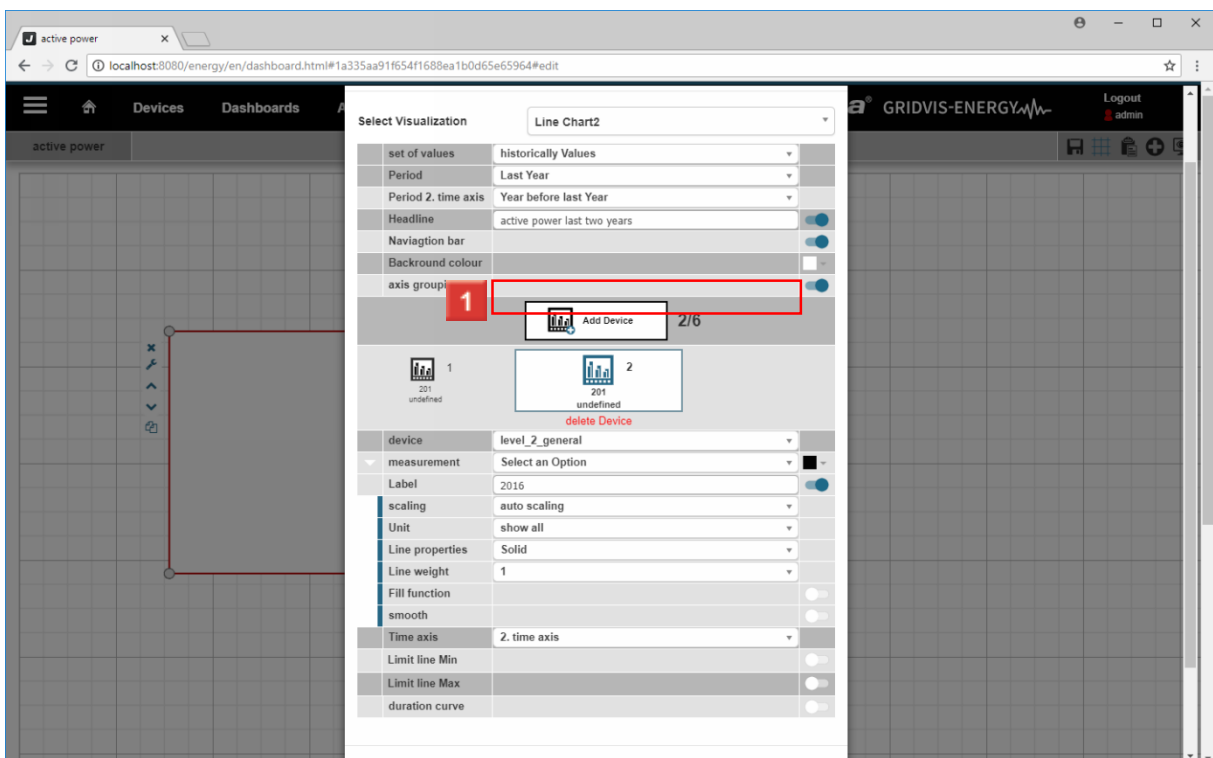
- 1 Click the **Add device** button to add another measured value to the chart.
- 2 Click the **Time axis** dropdown button.
- 3 Click the **Time axis** dropdown button.

The screenshot shows the 'Edit Widget' dialog for a Line Chart. The 'Time axis' dropdown is set to '1. time axis'. The '2. time axis' item in the dropdown menu is highlighted with a red box. The dialog includes various configuration options such as 'set of values', 'Period', 'Headline', 'Navigation bar', 'Background colour', 'axis grouping', 'device', 'measurement', 'Label', 'scaling', 'Unit', 'Line properties', 'Line weight', 'Fill function', 'smooth', 'Limit line Min', and 'Limit line Max'.

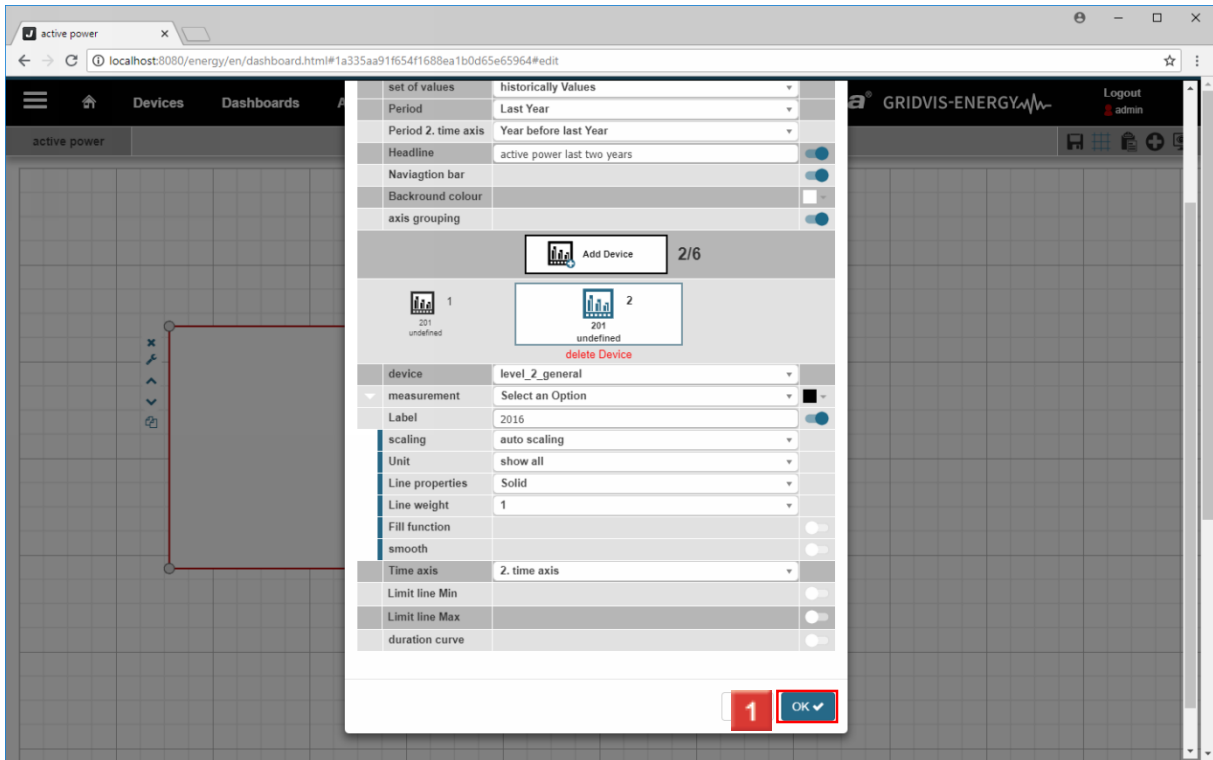
- 1 Click the **2. time axis** list item.
- 2 Click the **2. time axis** list item.



- 1 Click the **Period 2. time axis** dropdown button.
- 2 Click the **Period 2. time axis** dropdown button.



- 1 Click the **Year before last Year** list item.



1 Click the **OK** button.



1 Click the **Save** button.



1 Click the **View Dashboard** button.

**i** The slide controls can be used to adjust the displayed time period.

Please enter your text here.

Live values and historical data

Up to 6 live values or 6 historical data can be mapped in a line chart widget.

Threshold values

In addition, threshold values can be shown; if these values are exceeded or fallen below, the visualization of the corresponding value will change color.

Multiple axis assignment

A line chart can have up to 4 value axes and 2 time axes.