

# Manual

Create virtual device



# Table of Contents

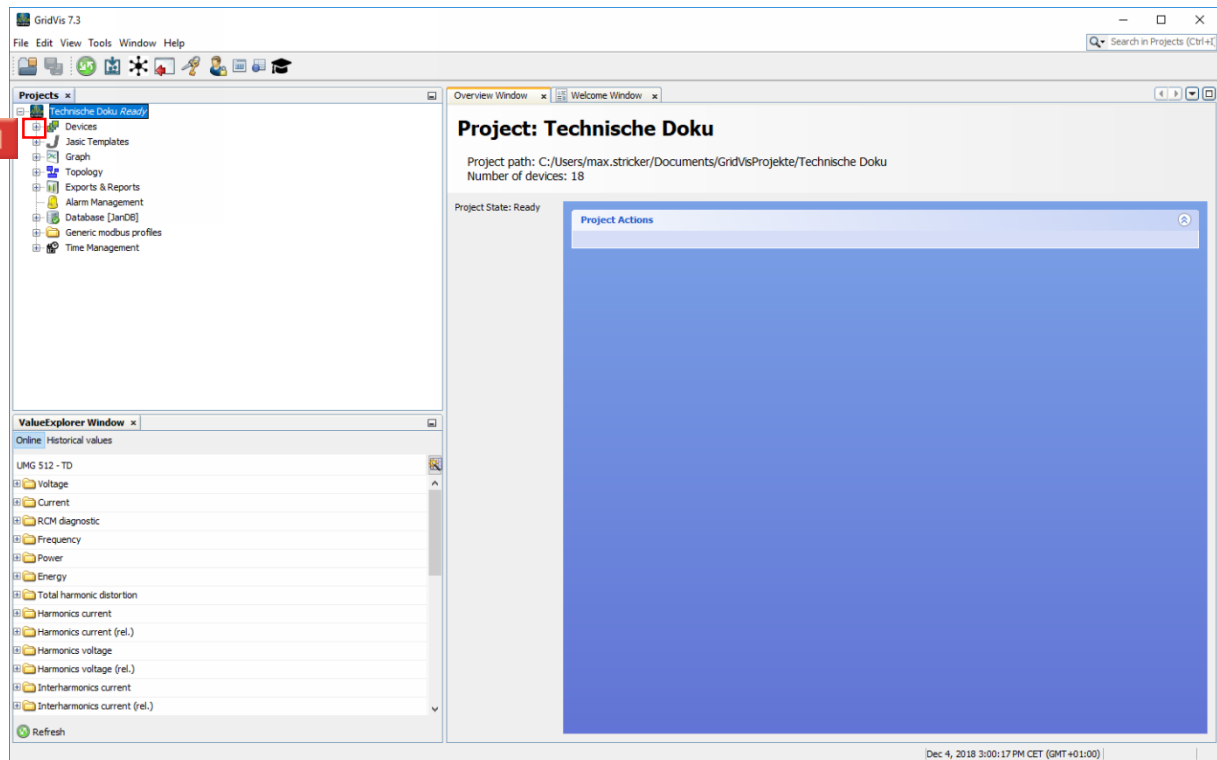
- 1 CREATING A VIRTUAL DEVICE .....2
- 2 CONFIGURING THE VIRTUAL DEVICE.....6
- 3 CONFIGURING SETTINGS.....20

These instructions explain how to create a virtual device in the GridVis Desktop software.

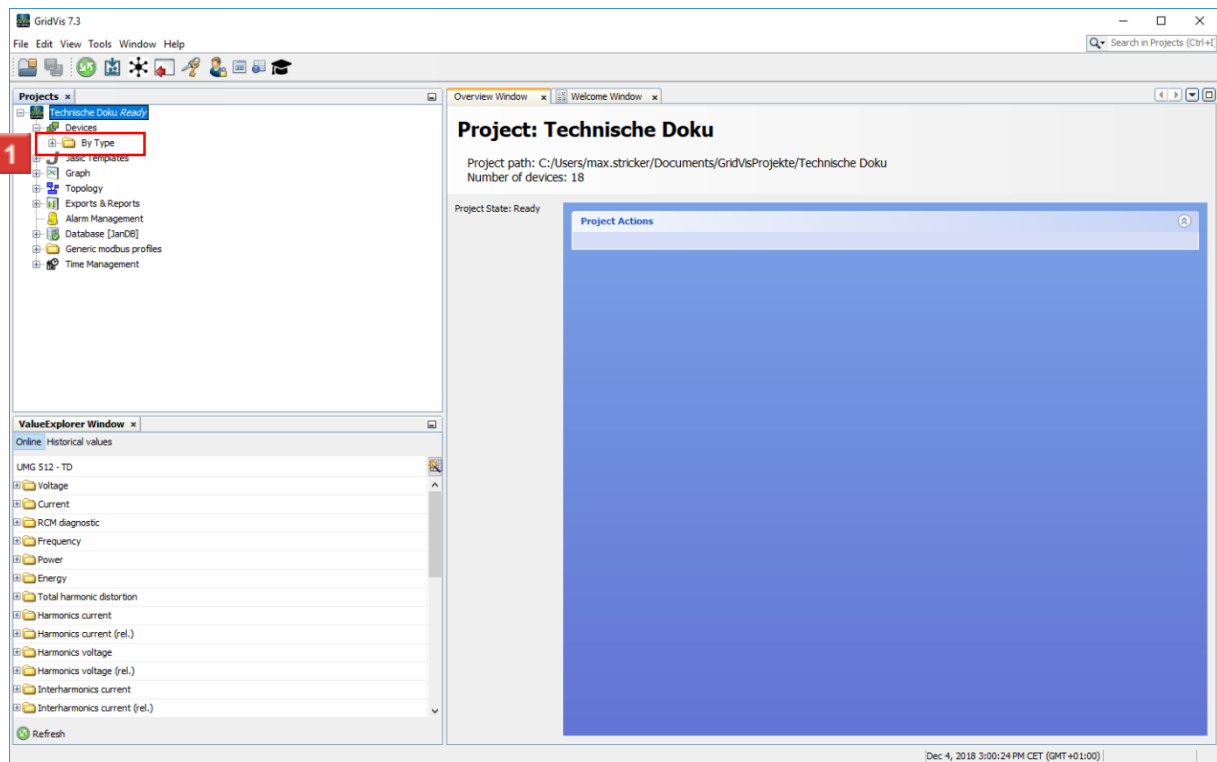
#### Content

- ▪ Creating a virtual device
- ▪ Configuring the device
- 
- 
- 
-

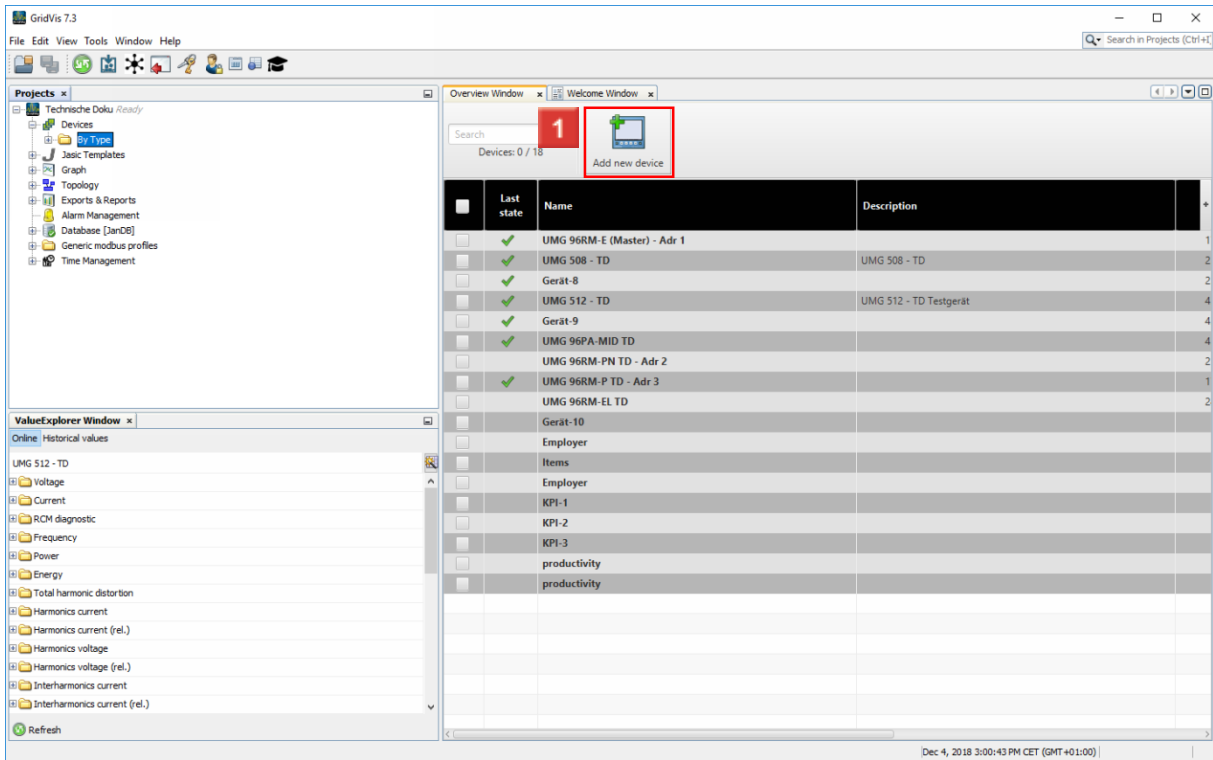
# 1 Creating a virtual device



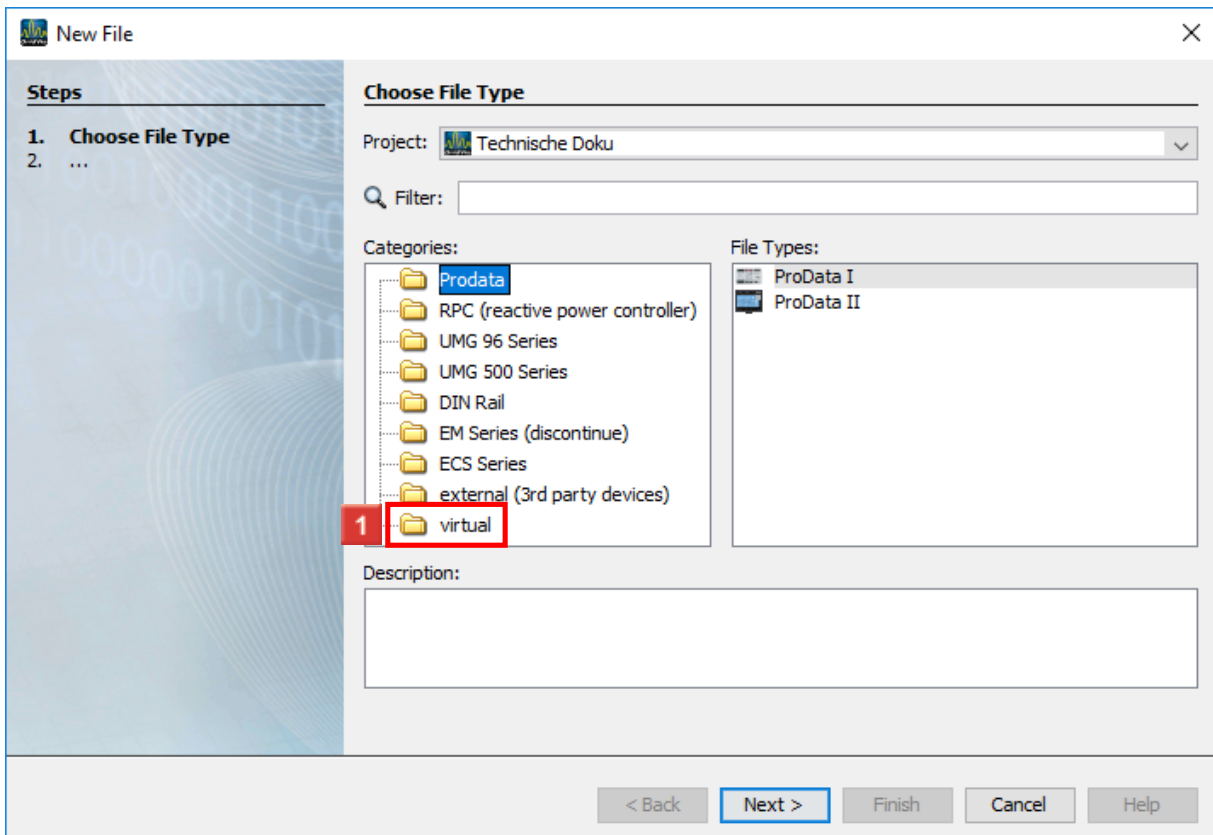
1 Click the **Devices** tree item.



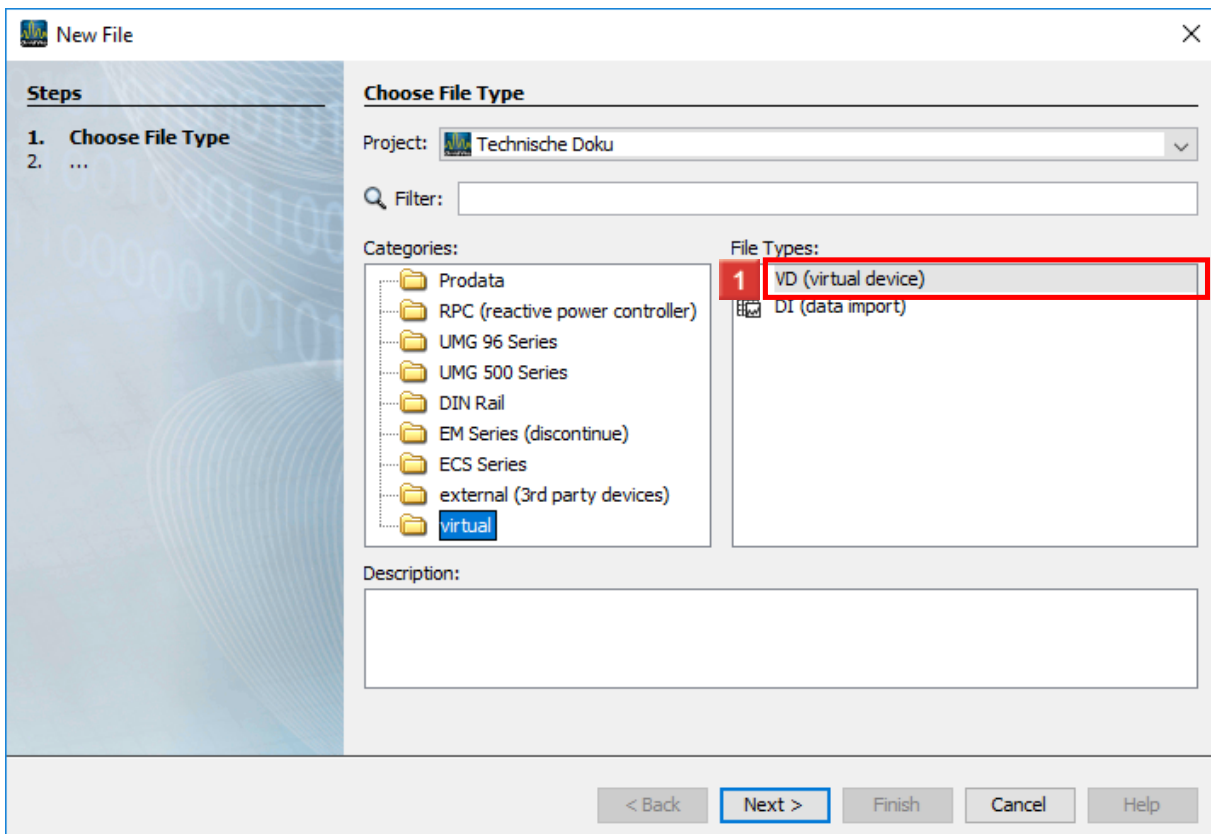
1 Double-click the **By Type** tree item.



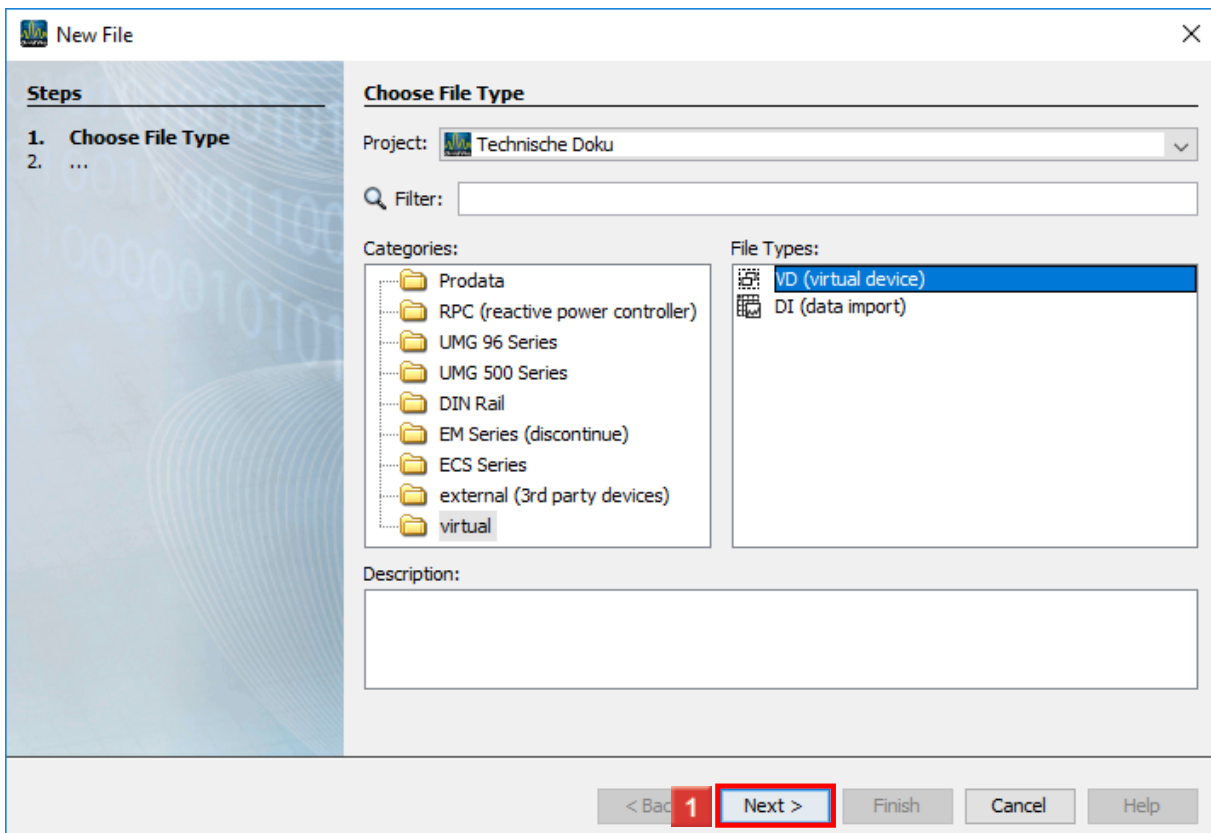
1 Click the **Add new device** button.



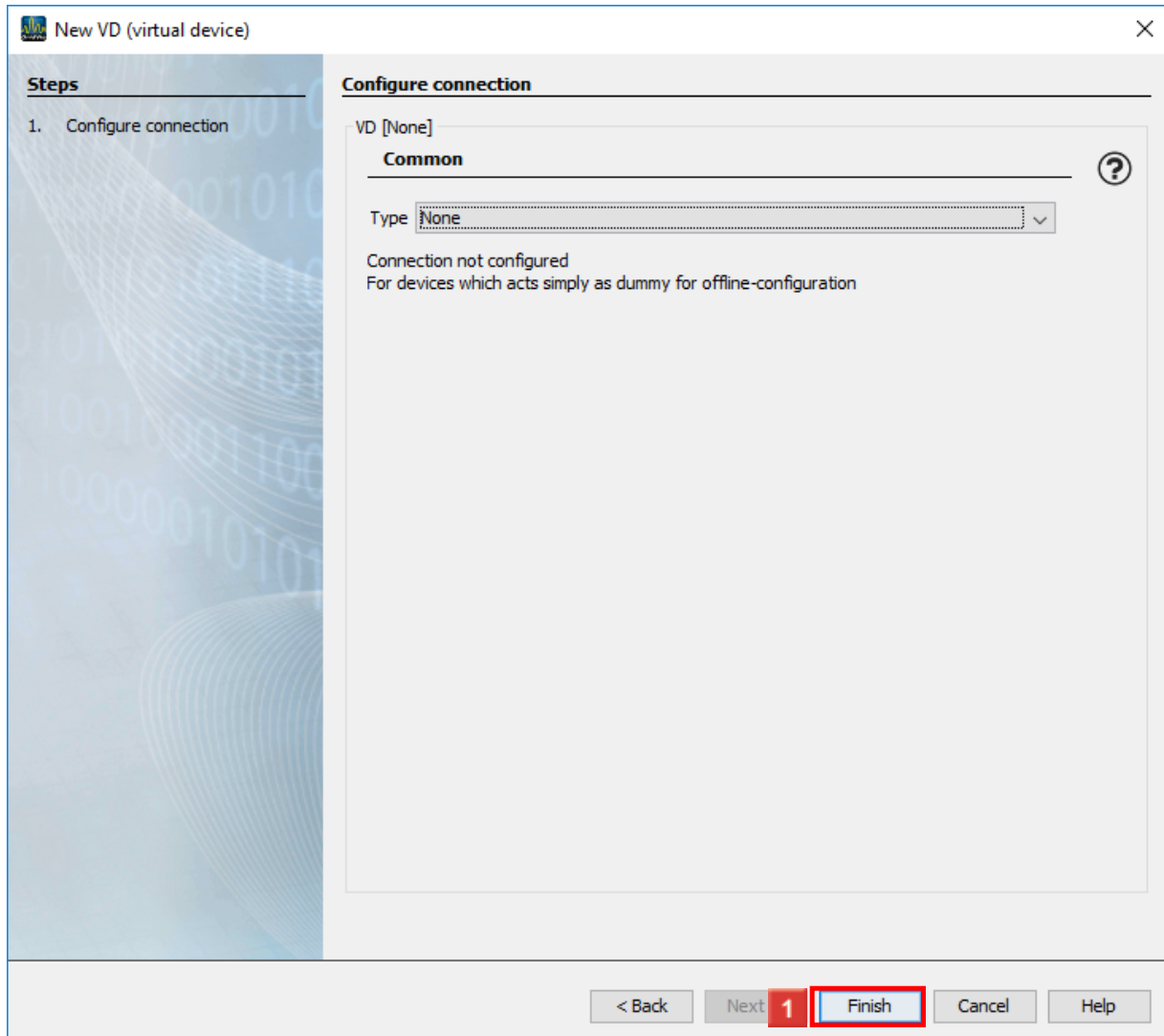
1 Click the **virtual** tree item.



1 Click the **VD (virtual device)** list item.

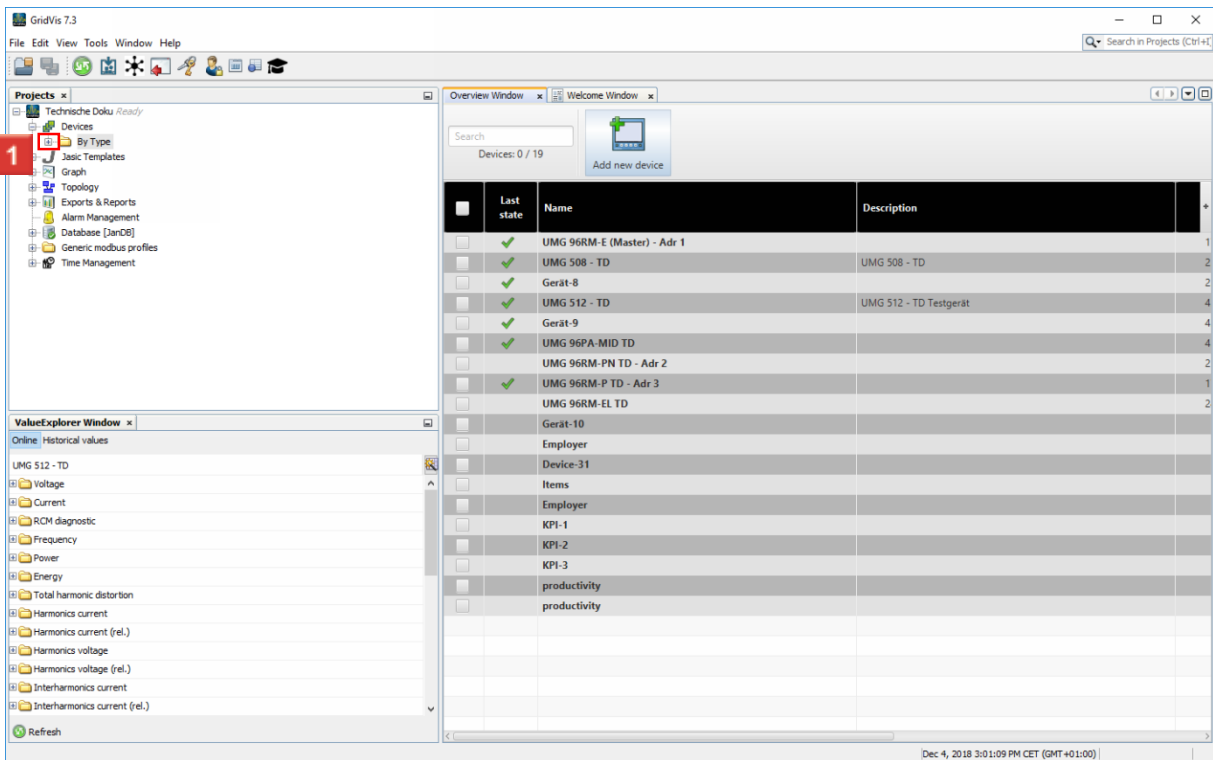


1 Click the **Next** button.

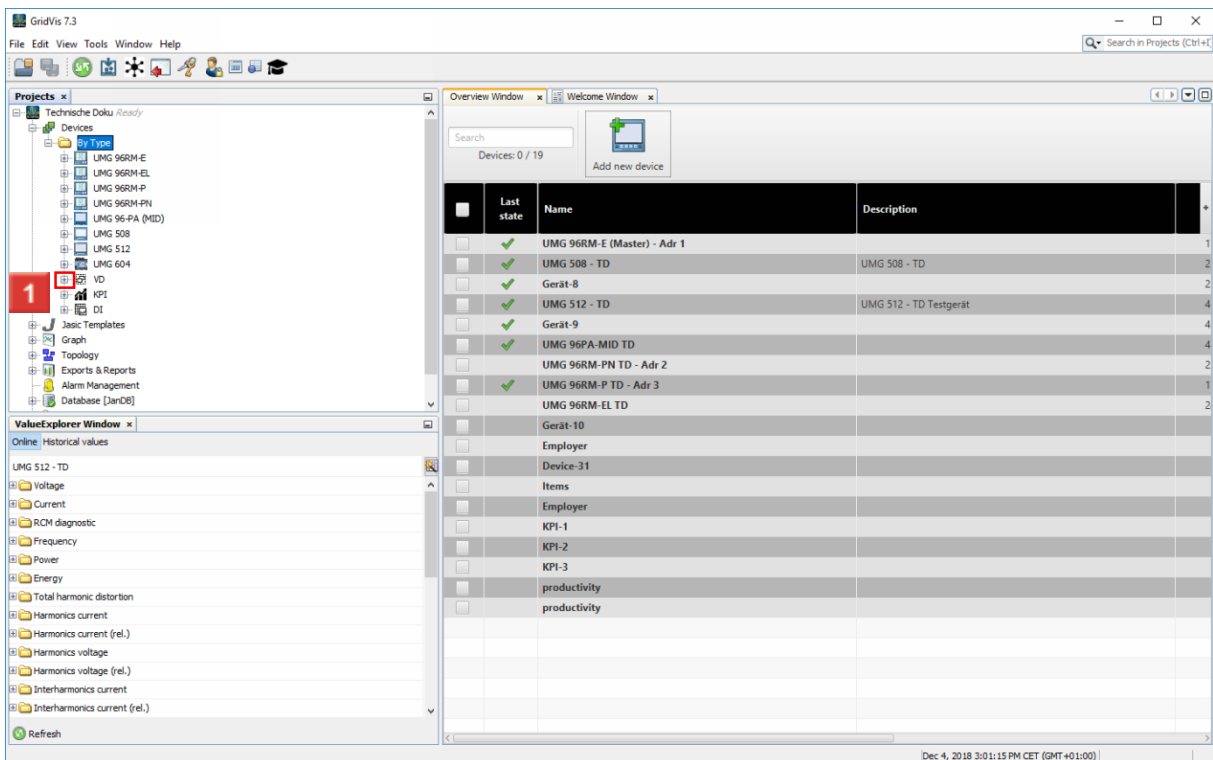


**1** Click the **Finish** button.

## 2 Configuring the virtual device

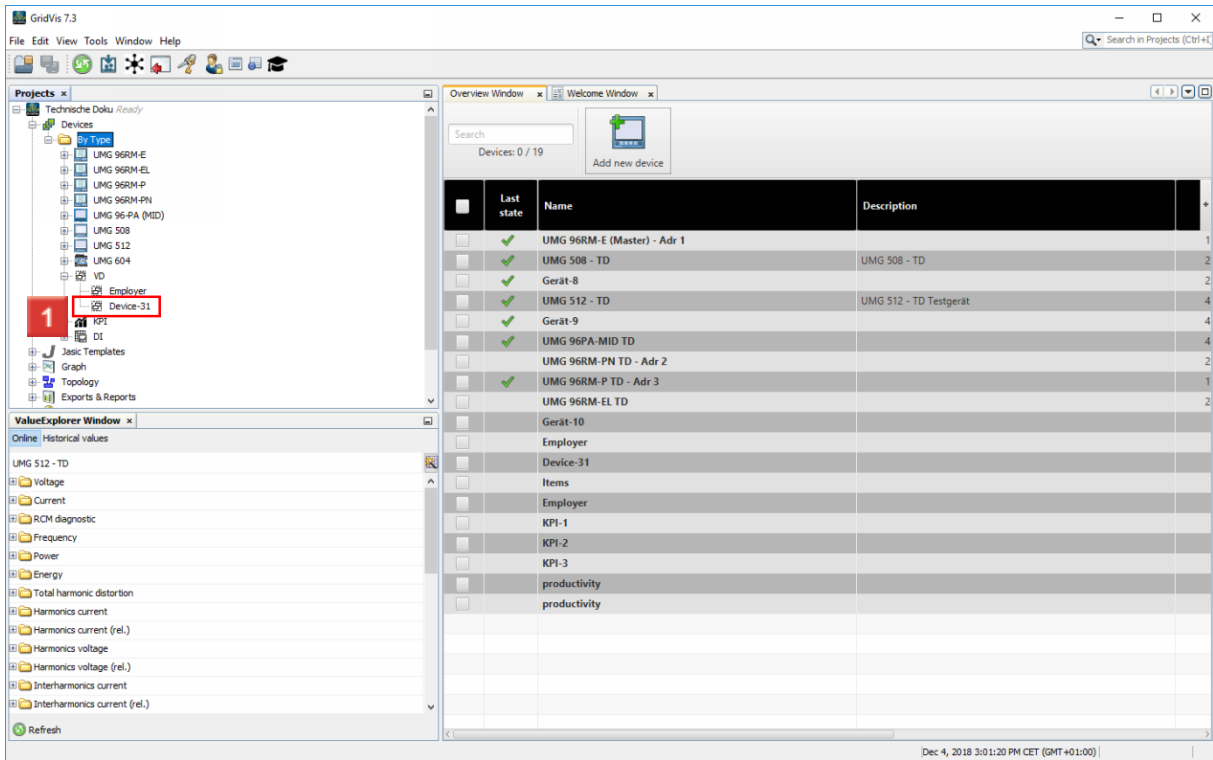


1 Open the **By Type** tree item.

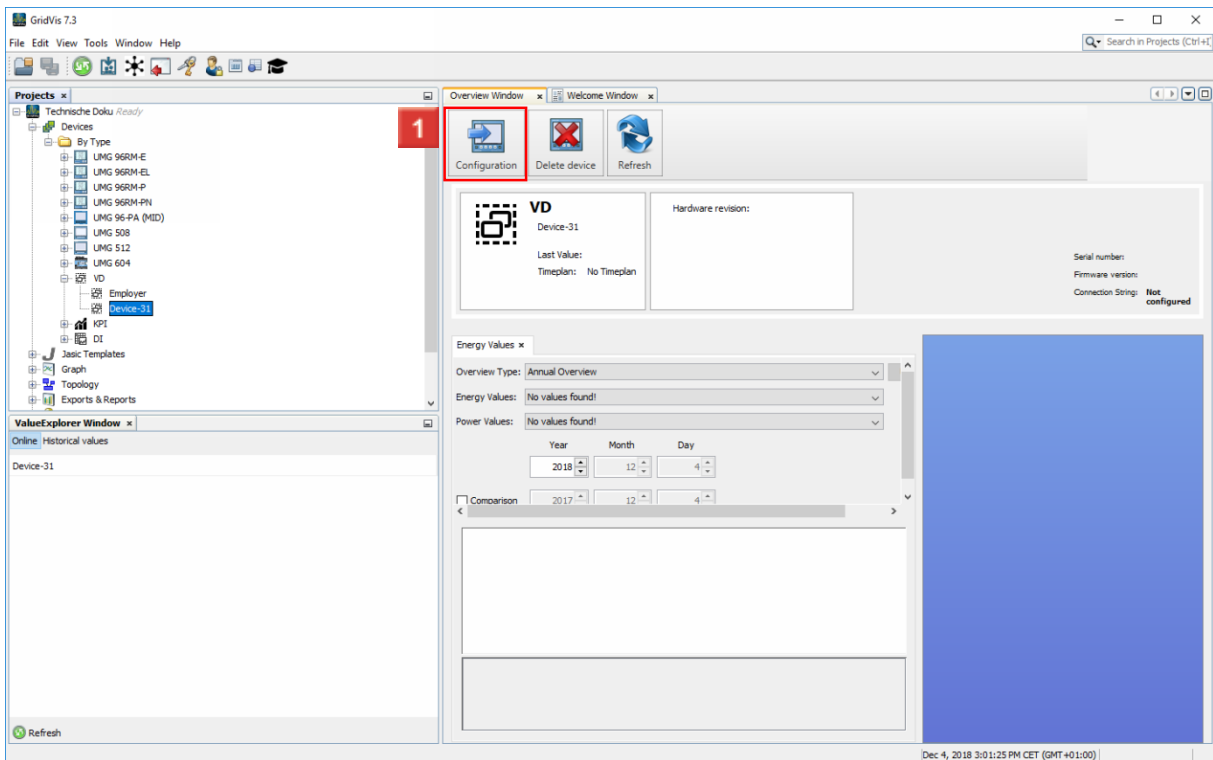


1 Open the **VD** tree item.

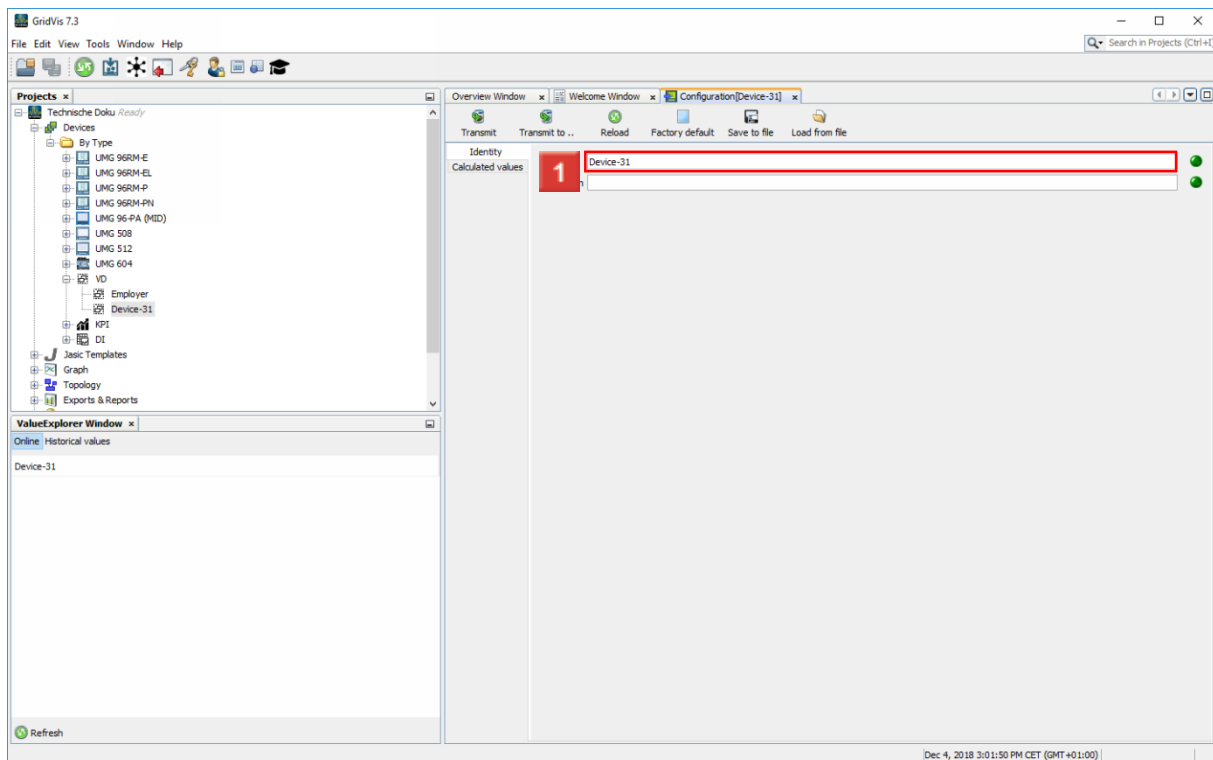




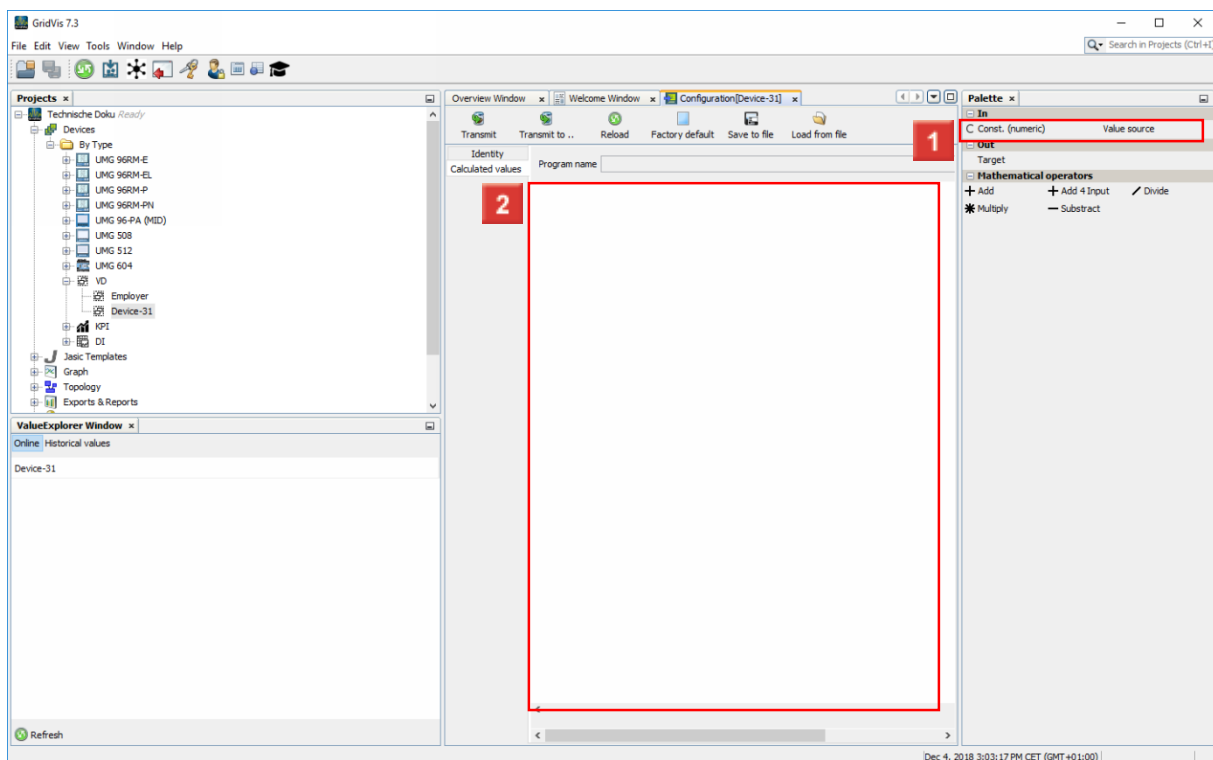
1 Click the **Device** tree item.



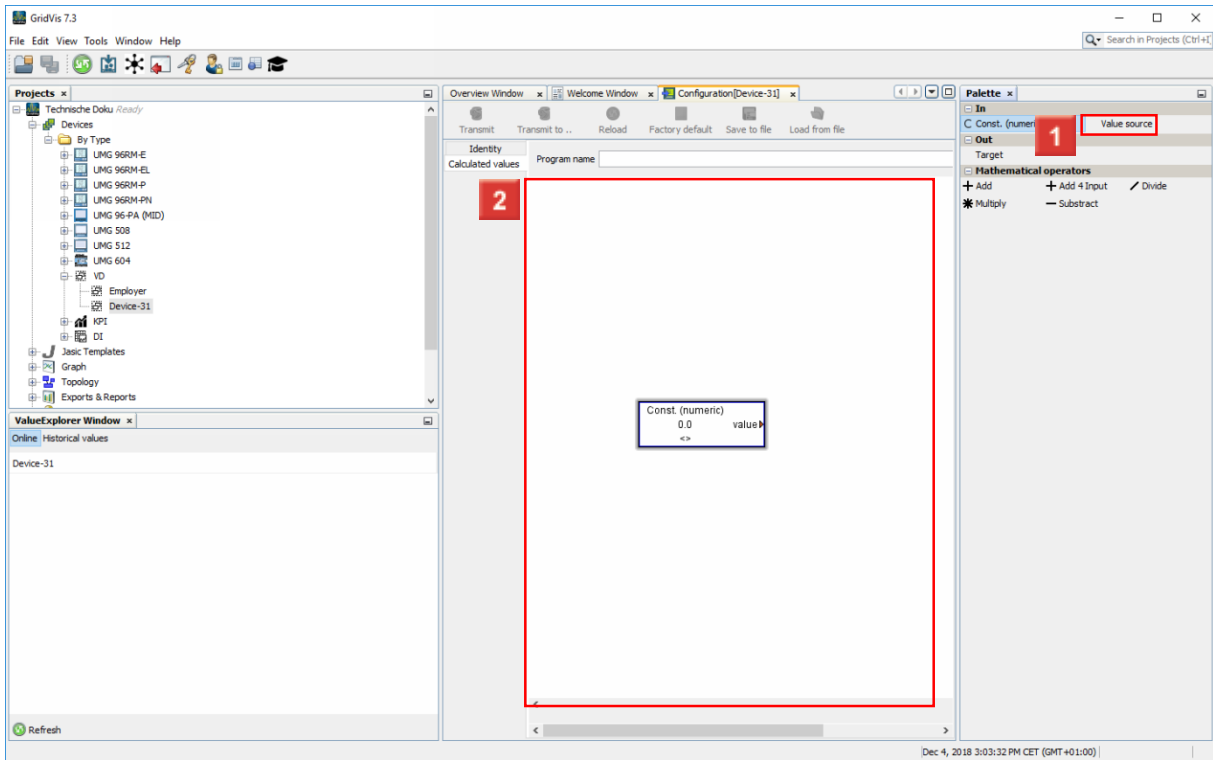
1 Click the **Configuration** button.



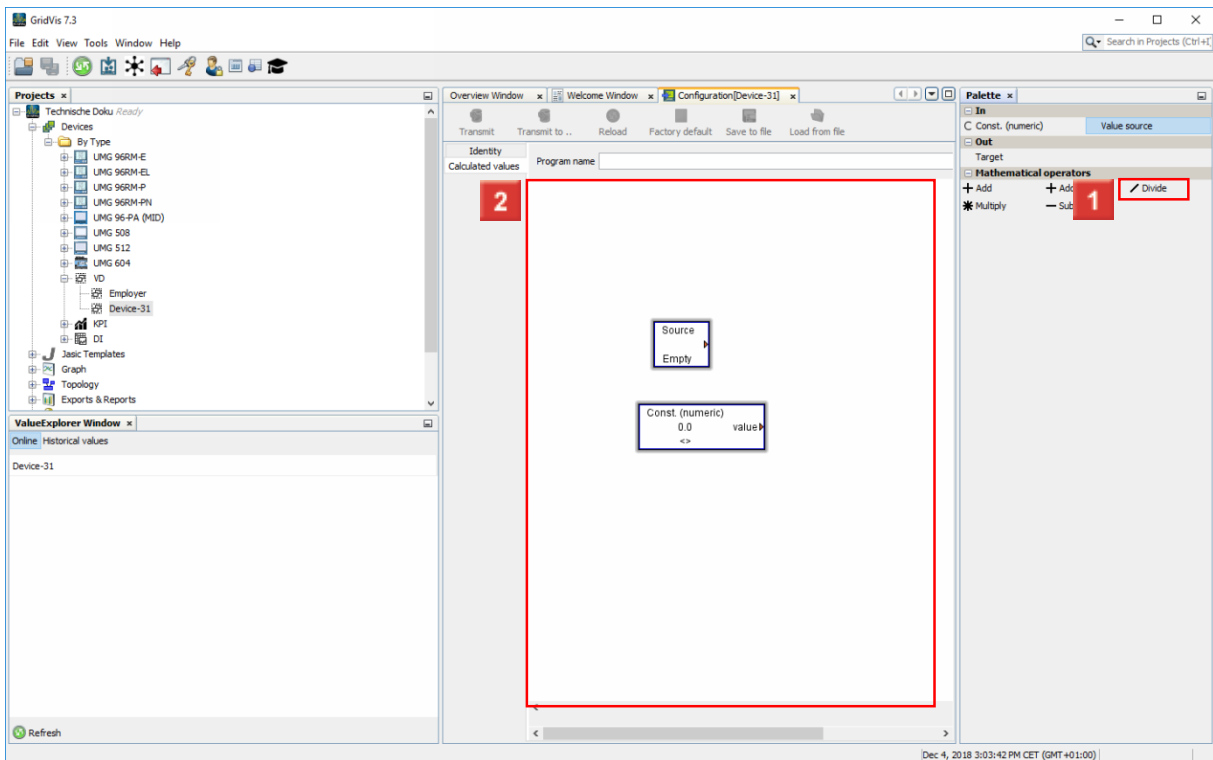
- 1 Click the **Name** input field to enter a name for the virtual device.
- 2 Click the **Calculated values** button.



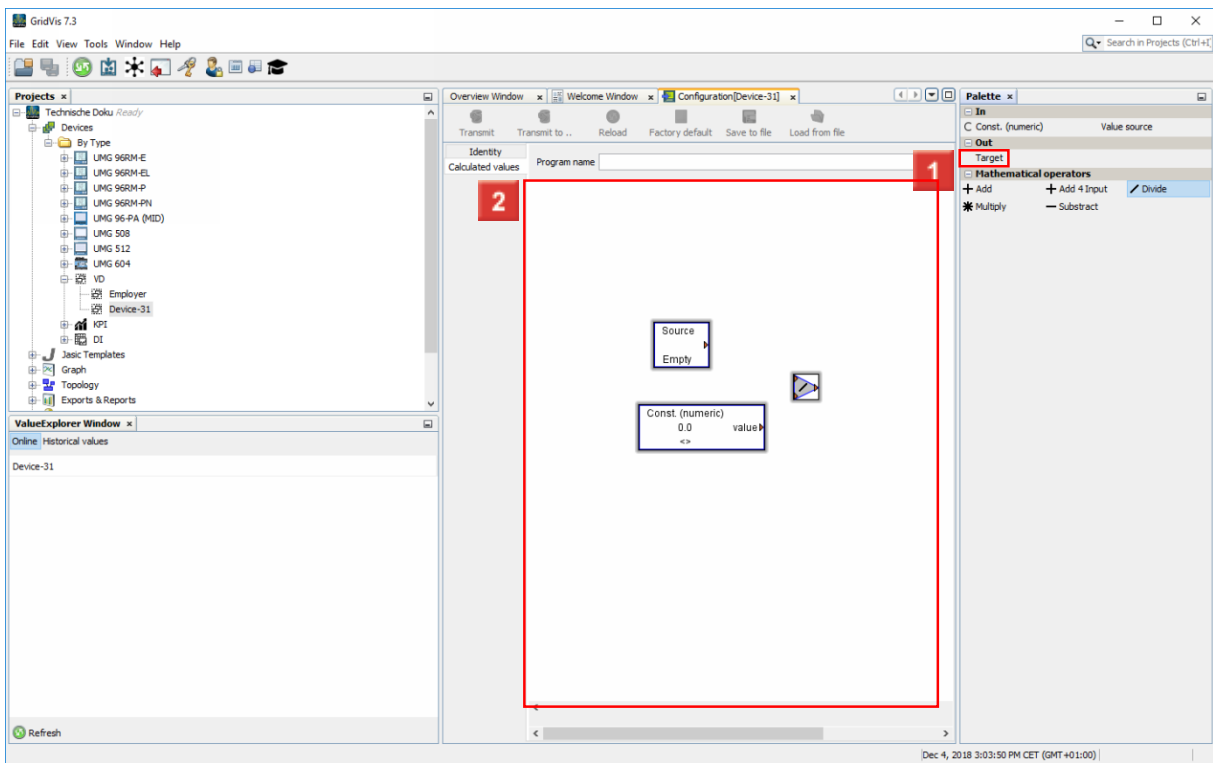
- 1 To add a constant, left-click and drag the **C Const. (numeric)** object to the **Palette** object.



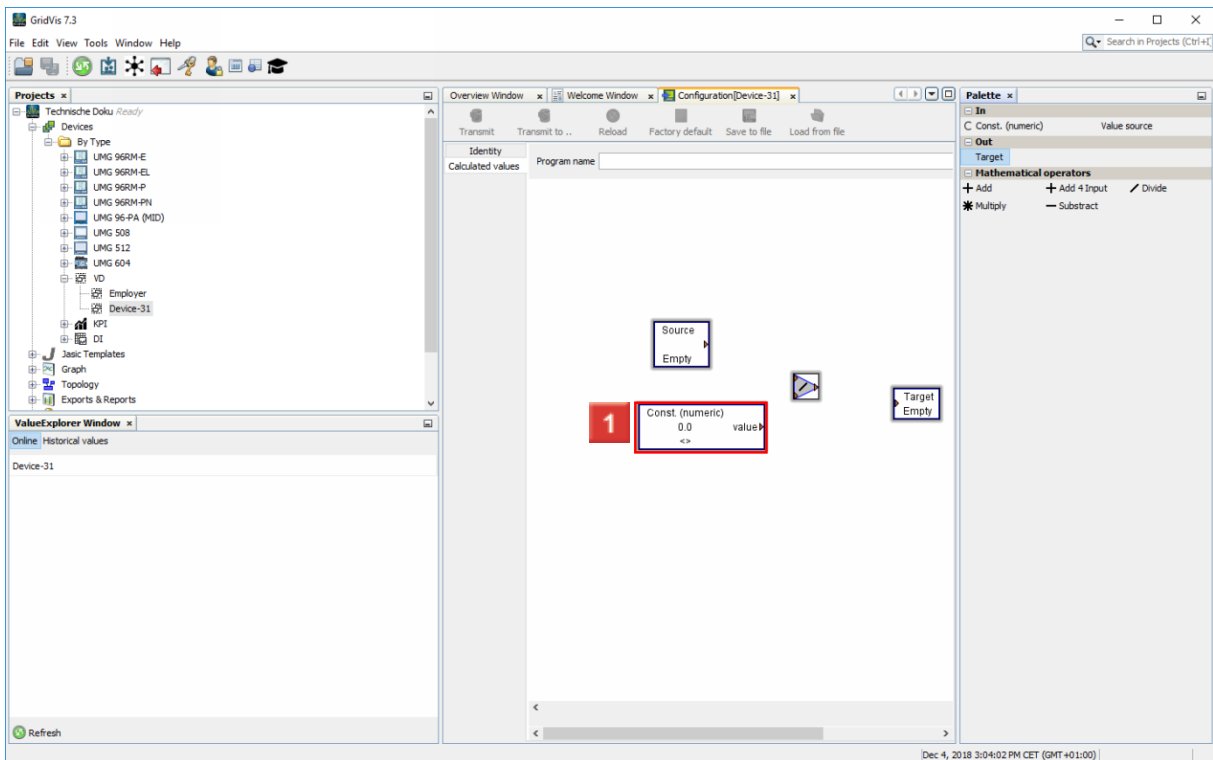
**1** To add a value source, left-click and drag the **Value source** object to the **Palette** object.



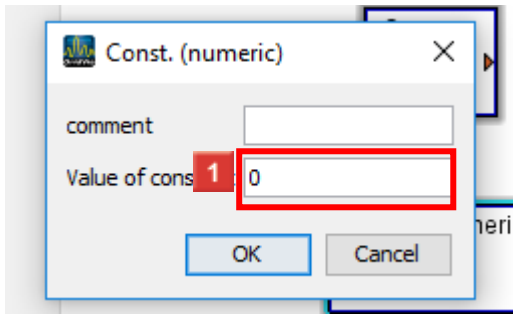
**1** To add a mathematical operator, left-click and drag the corresponding object to the **Palette** object.



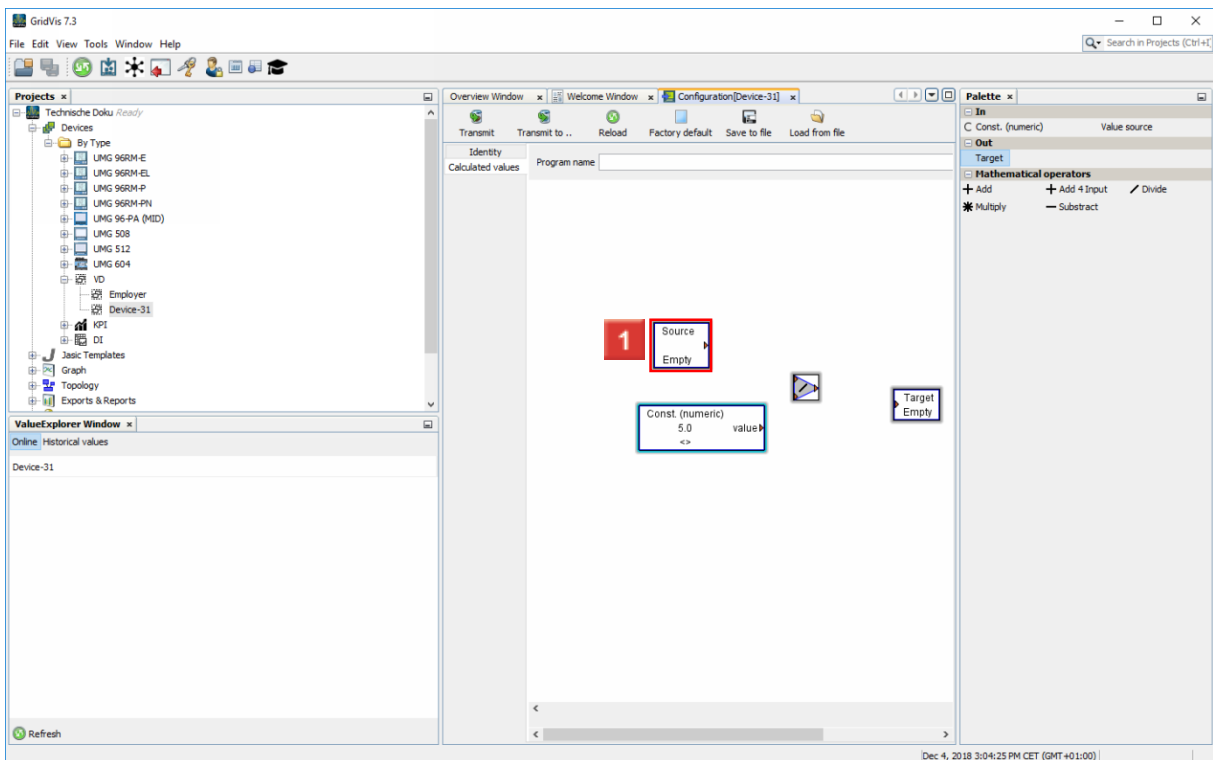
**1** To add a target, left-click and drag the **Target** object to the **Palette** object.



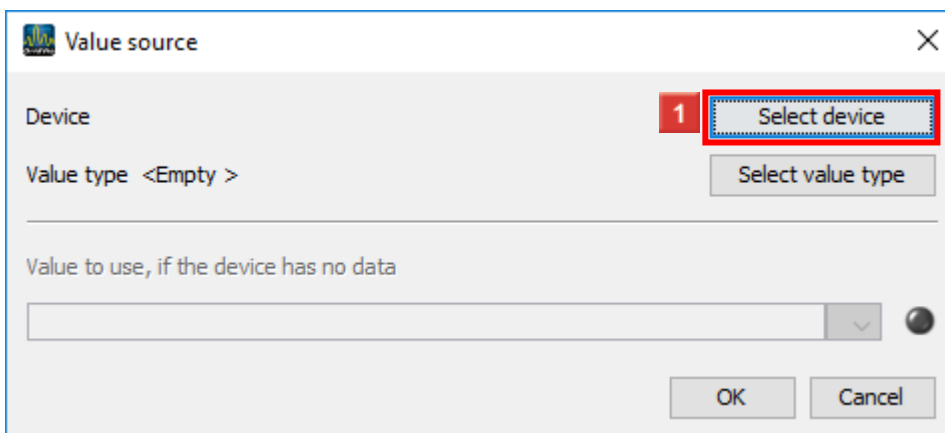
**1** To configure the constant, double-click the **Const. (numeric)** button.



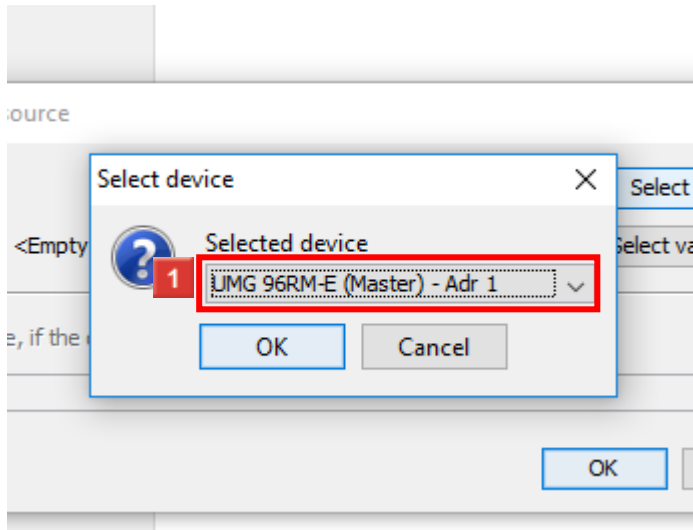
- 1 To define the value of the constant, click the **Value of constant** input field.
- 2 Click the **OK** button.



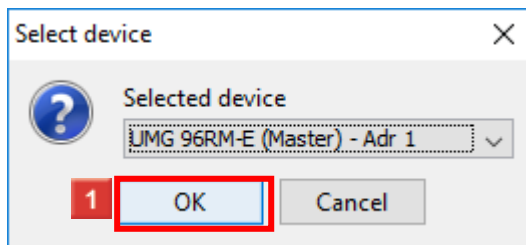
- 1 Double-click: **Source**.



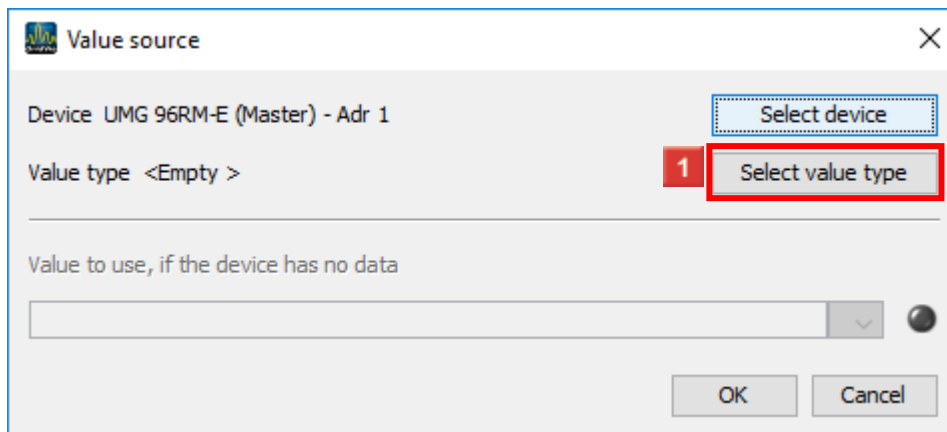
- 1 Click the **Select device** button.



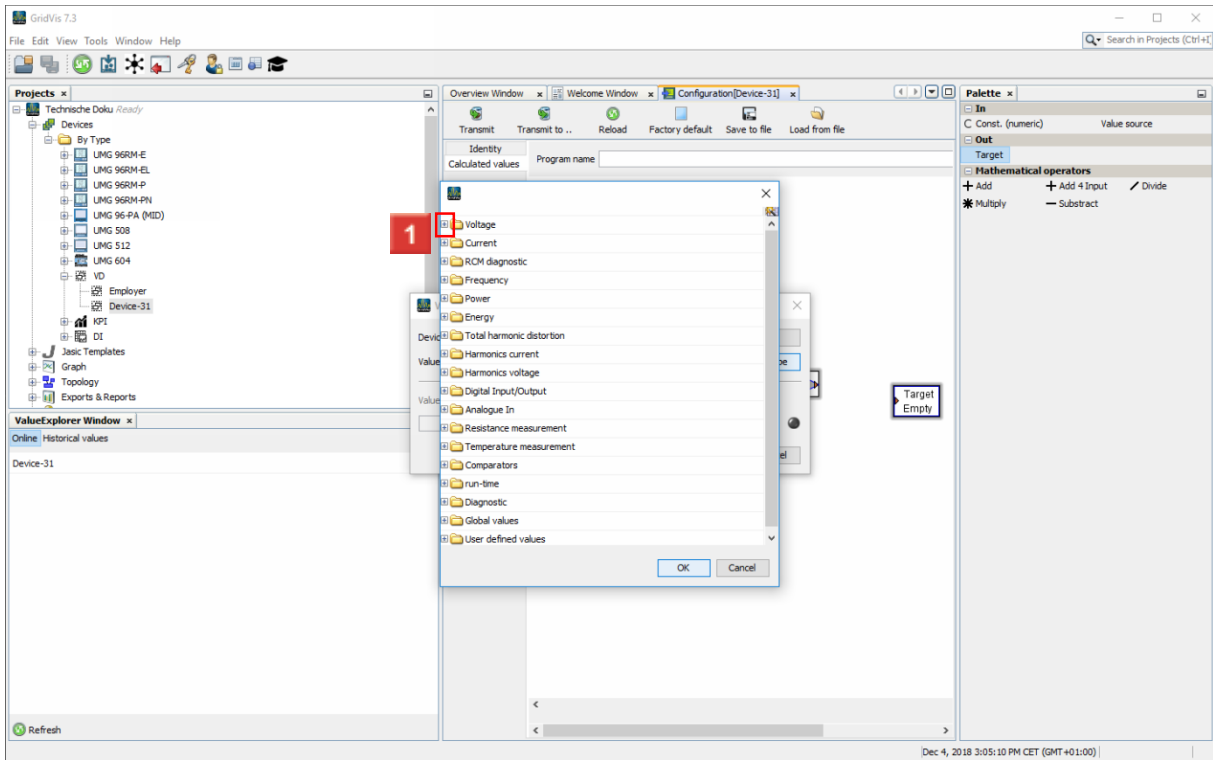
1 Select a device from the list.



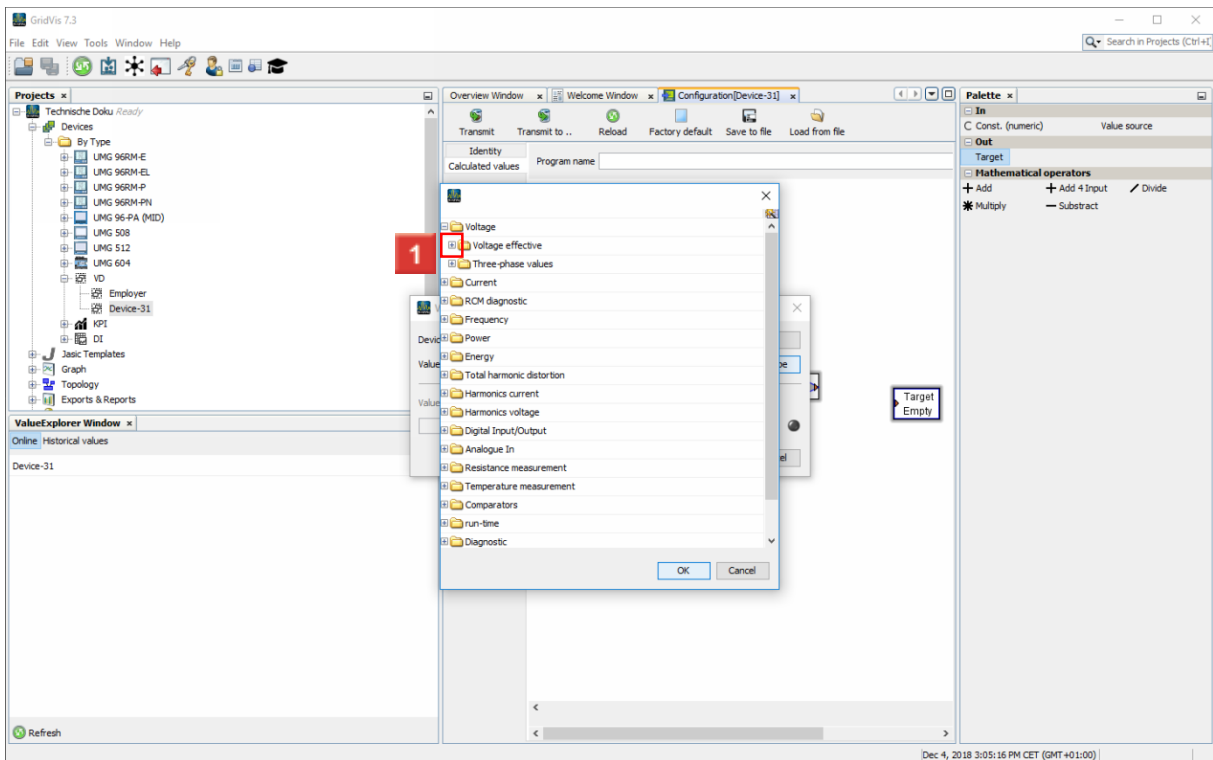
1 Click the **OK** button.



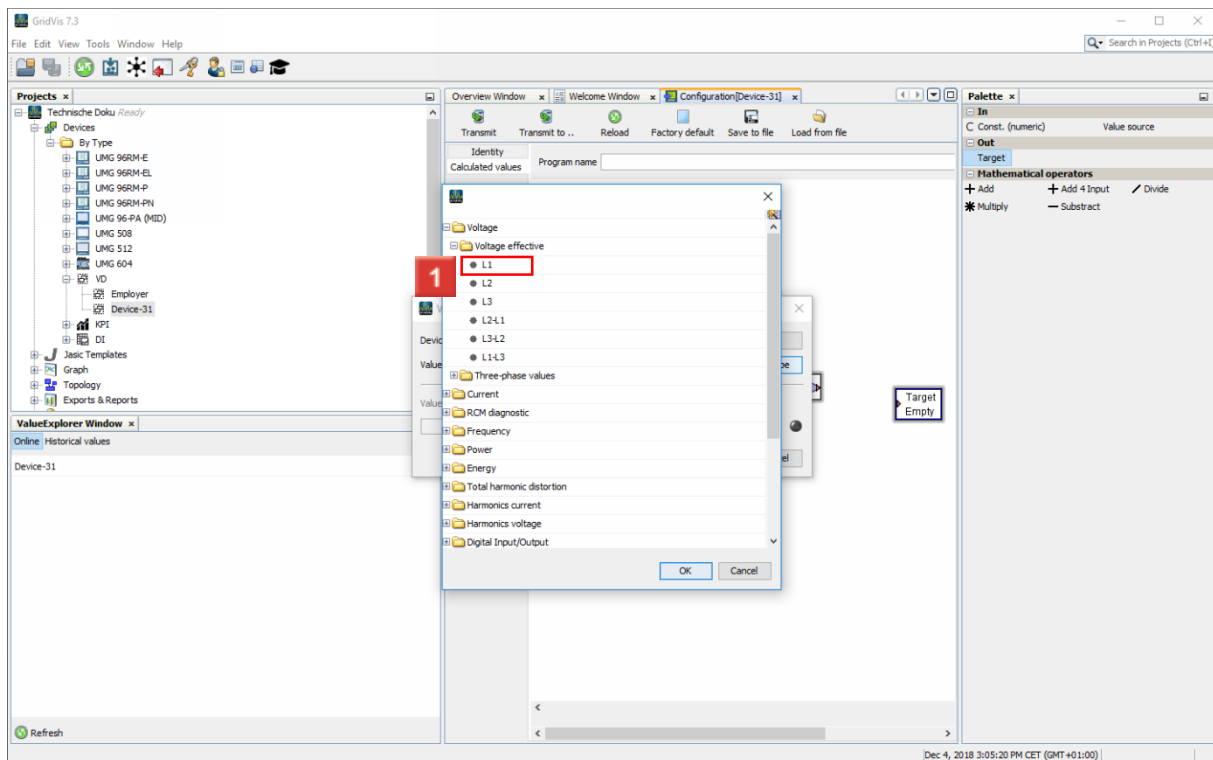
1 Click the **Select value type** button.



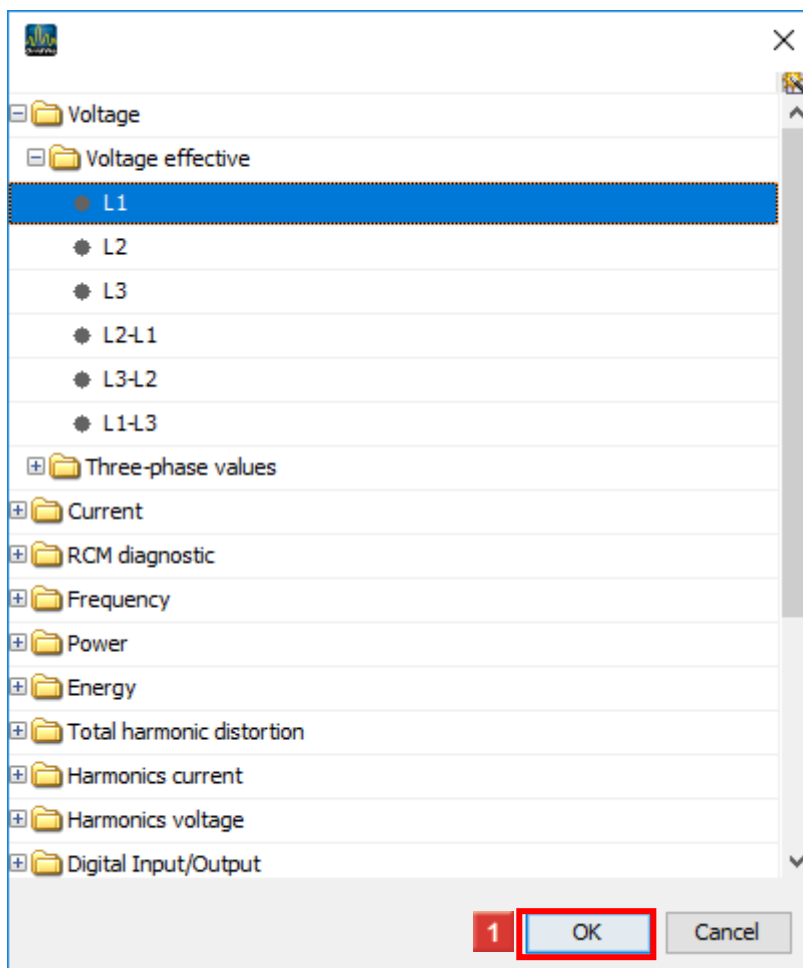
1 Open the **Voltage** tree item.



1 Open the **Voltage effective** tree item.

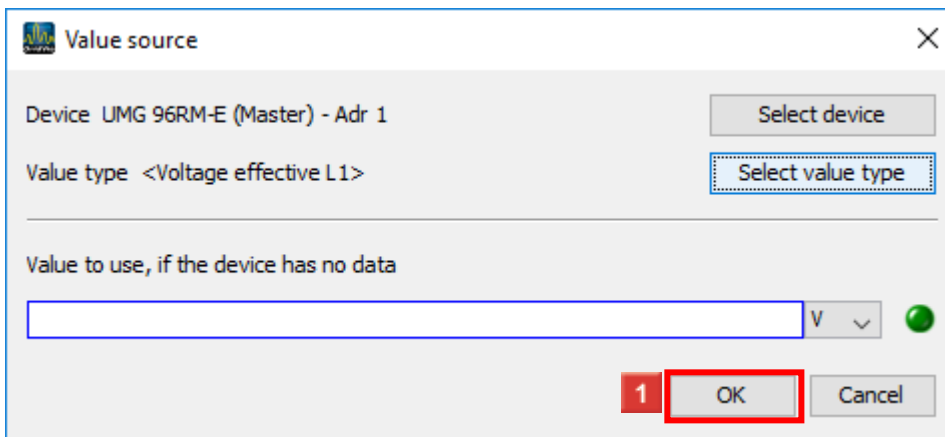


1 Click the **L1** tree item.

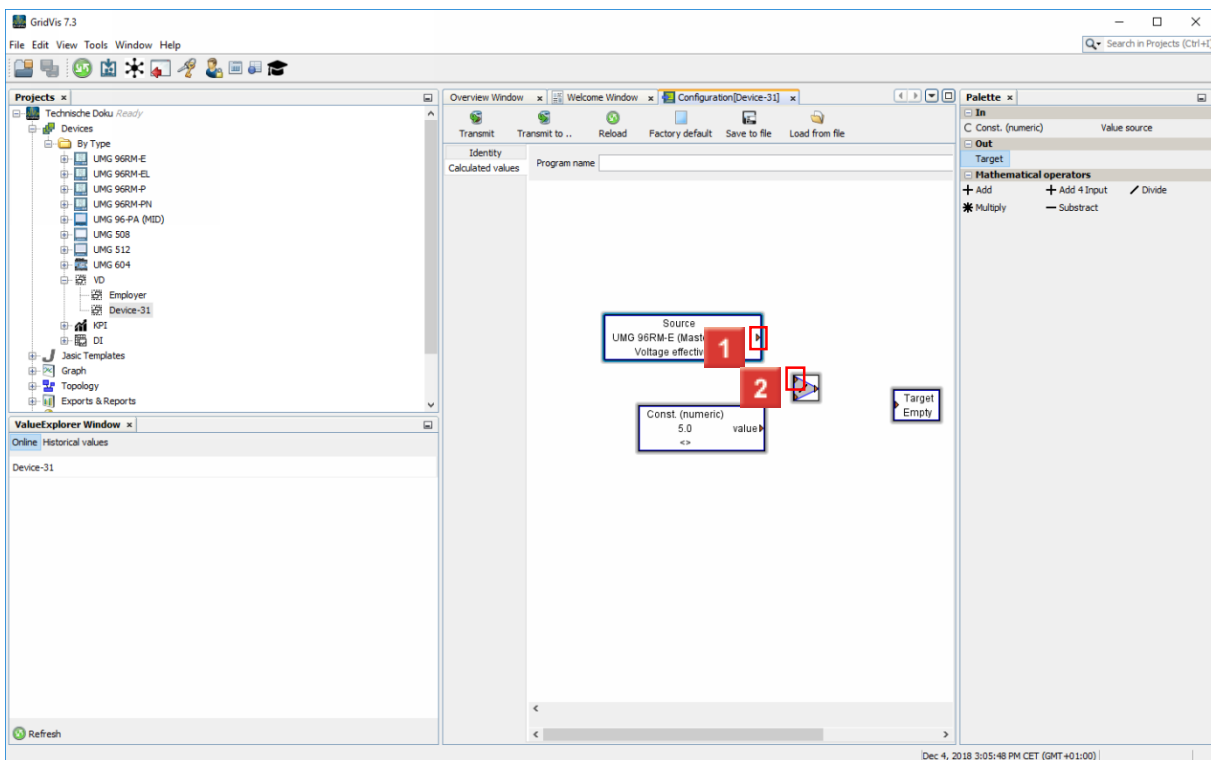


1 Click the **OK** button.

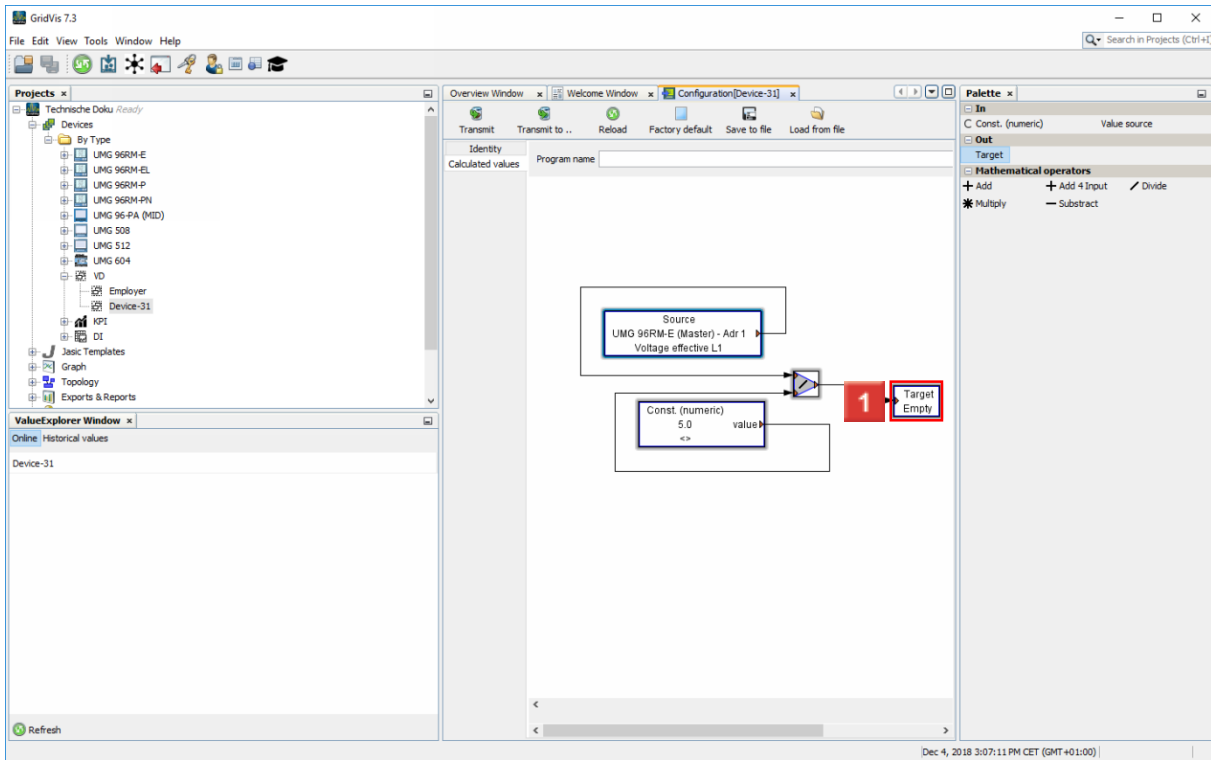




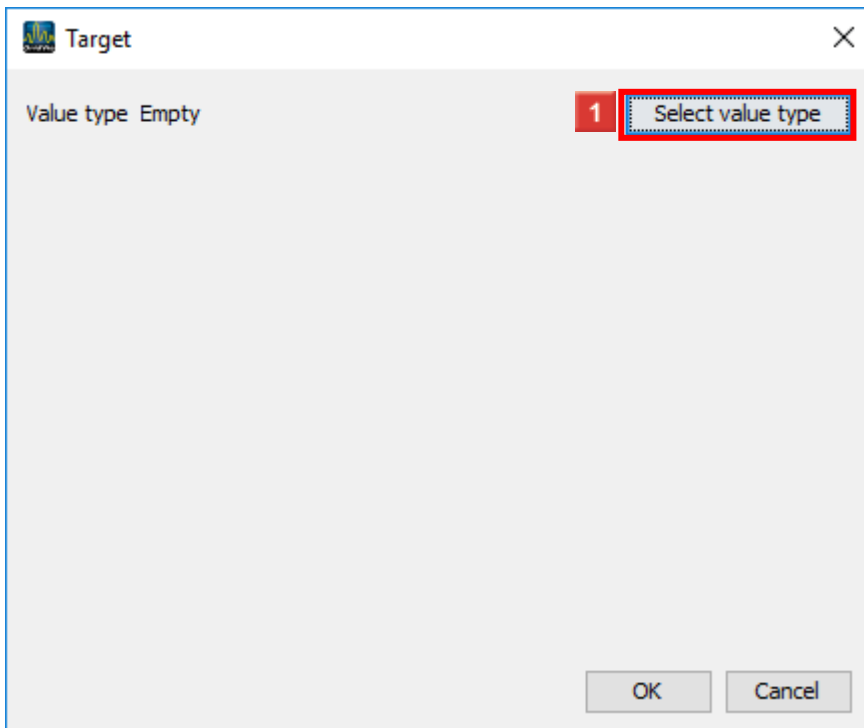
1 Click the **OK** button.



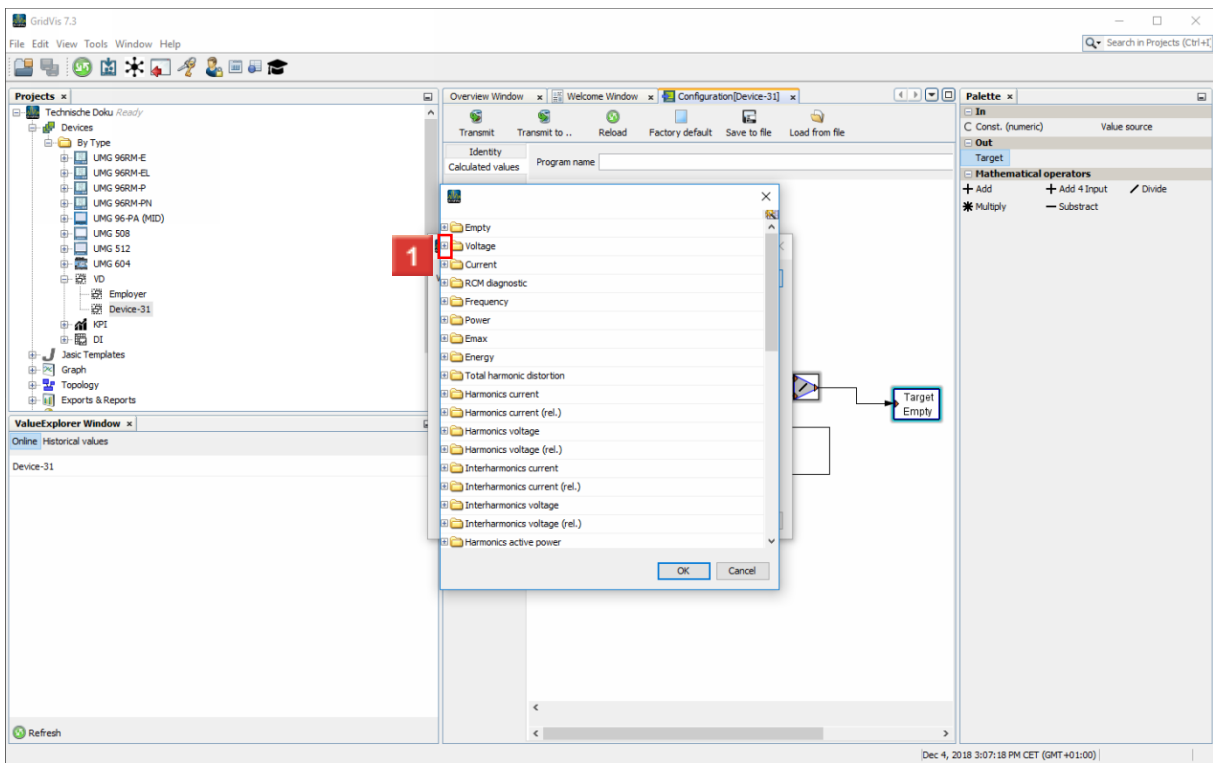
1 To link the elements together, drag-and-drop to connect the input and output arrows.



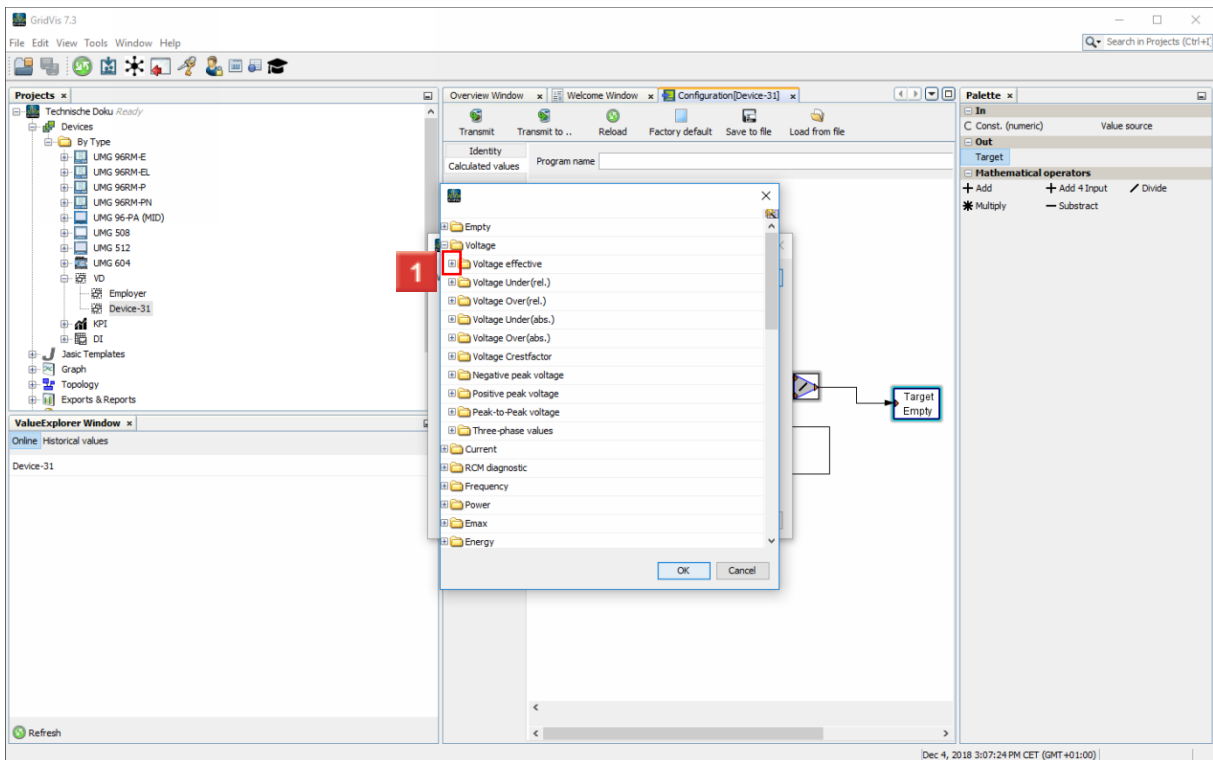
**1** To configure the target element, double-click the **Target** button.



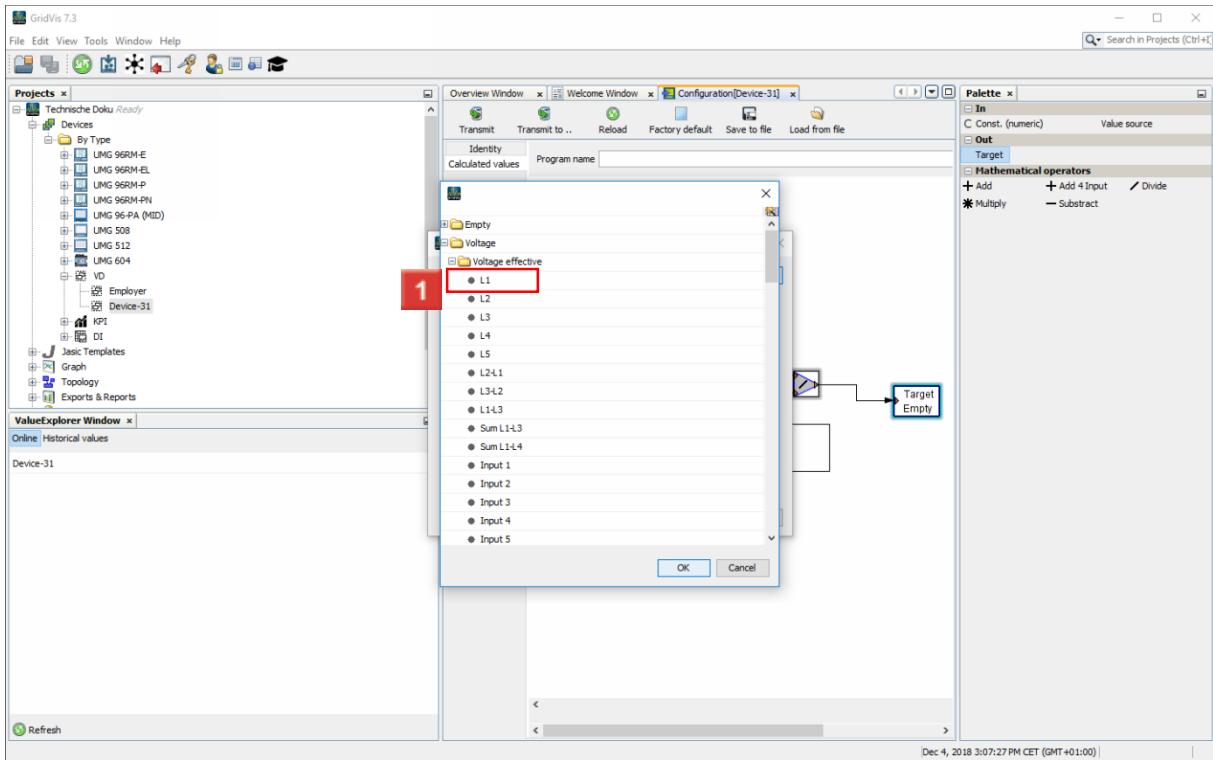
**1** Click the **Select value type** button.



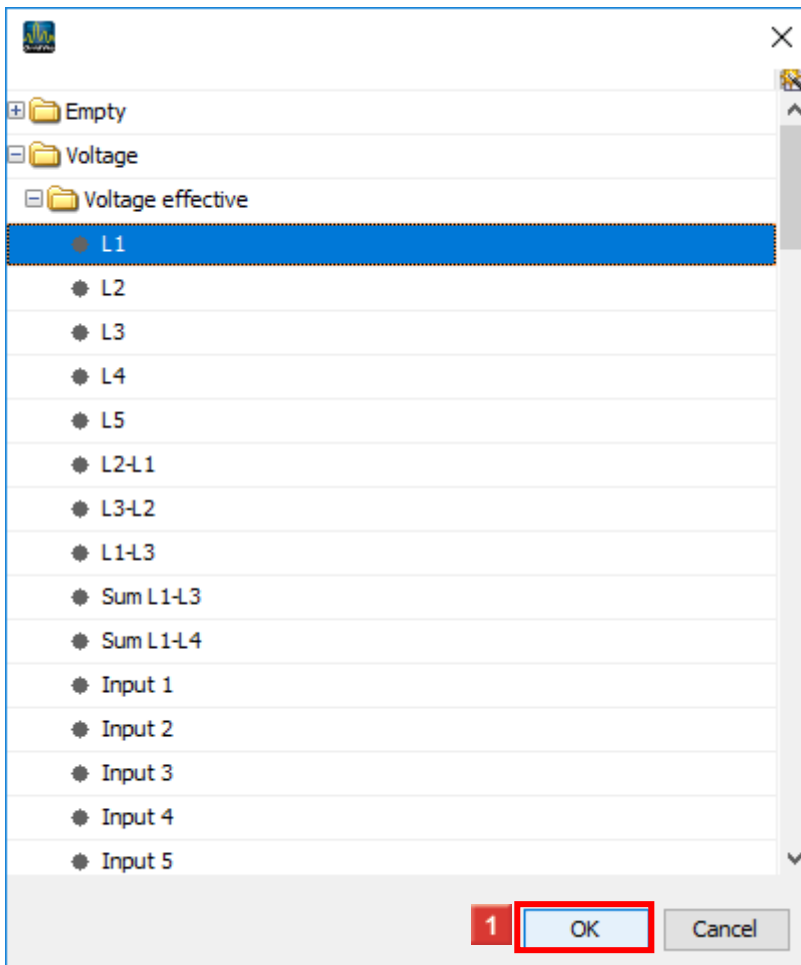
1 Open the **Voltage** tree item.



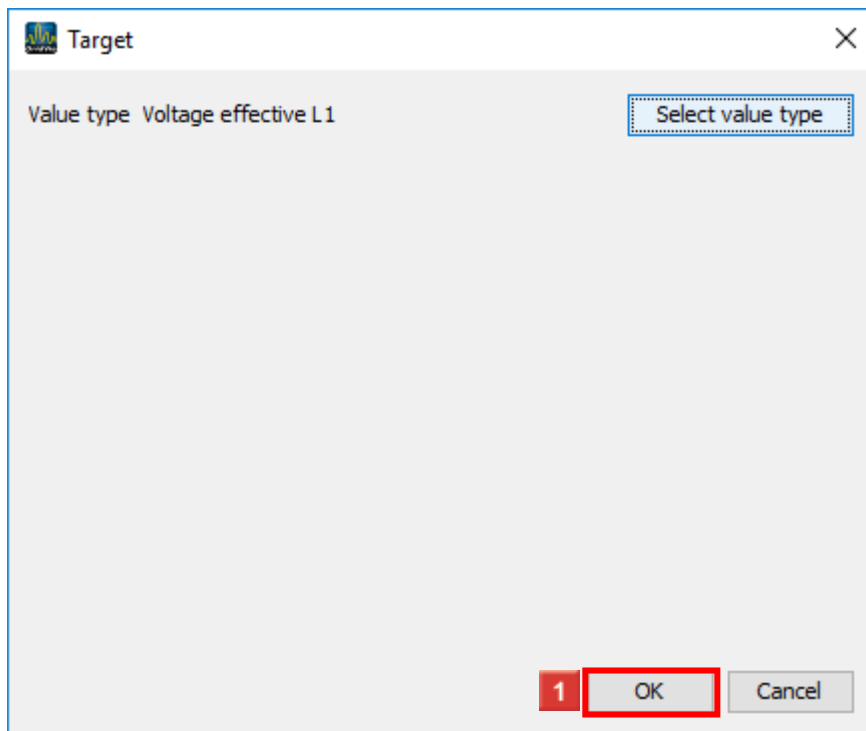
1 Open the **Voltage effective** tree item.



1 Click the L1 tree item.

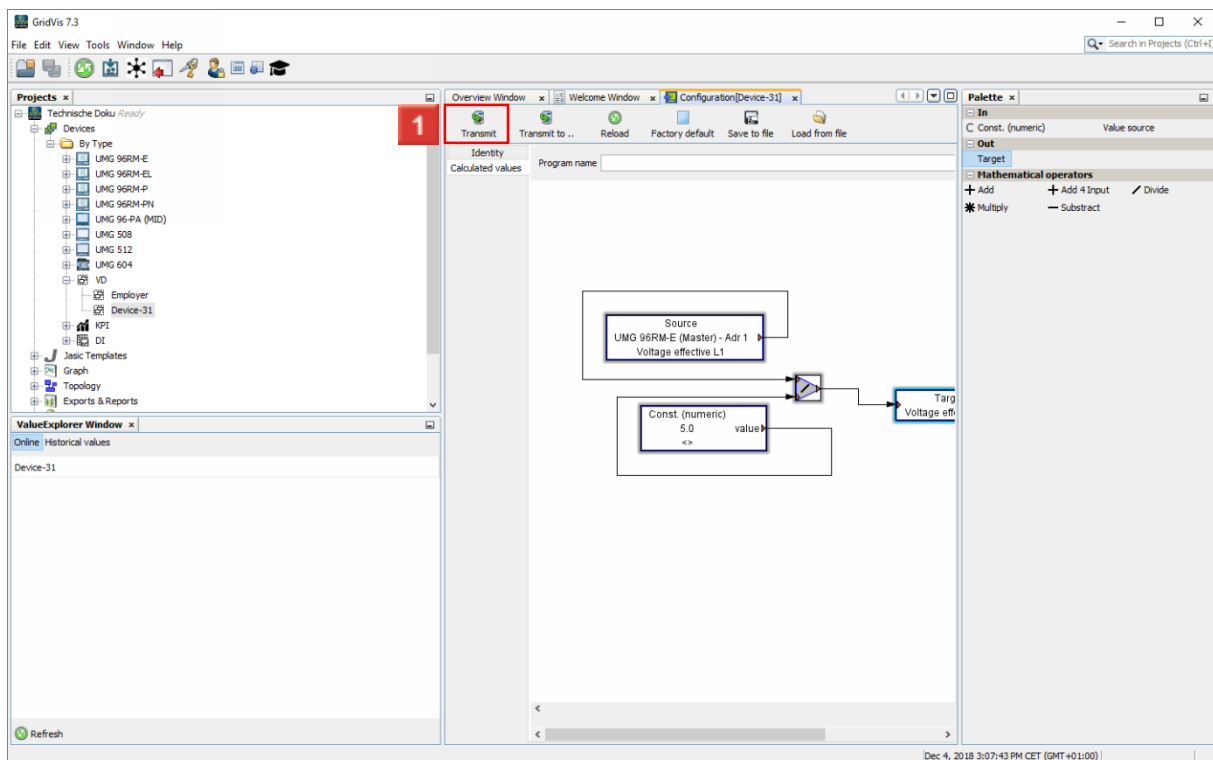


1 Click OK.

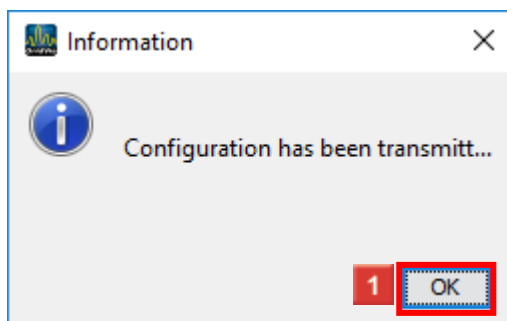


**1** Click the **OK** button.

### 3 Configuring settings



**1** Click the **Transmit** button.



**1** Click the **OK** button.

Please enter your text here.

Using a virtual device

Since measured values from different devices can be added together, virtual devices can be used very effectively in Sankeys, so-called quantity flow diagrams, to create a node, for example.

Options

In addition to the division shown here, addition, subtraction and multiplication are also available.

The operations can be carried out with measured values and / or constants.

The measured values of a virtual device modeled by the operations can be used in other virtual devices.

Good to know

Mathematical links can be interconnected. To form the sum of over four elements, for example.