

Manual

Integrate device



Table of Contents

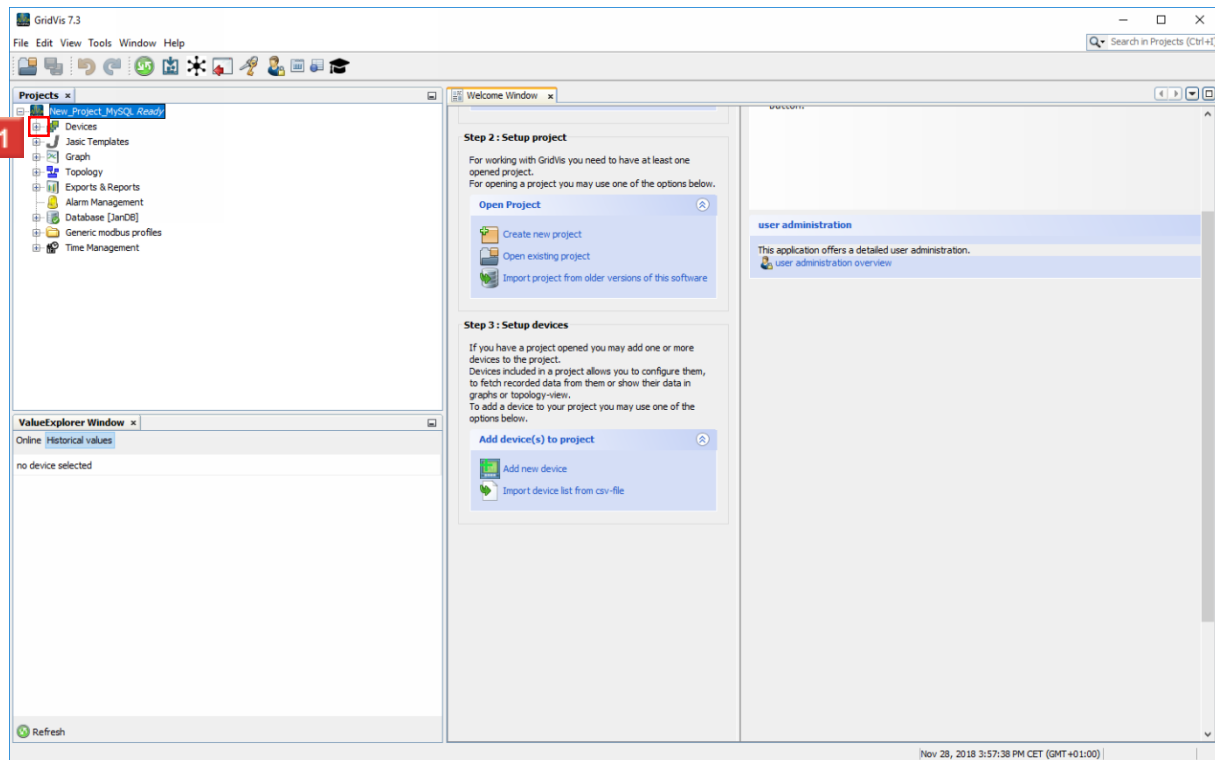
- 1 CREATING A DEVICE2
- 2 CONNECTION CONFIGURATIONS5
- 3 CONFIGURING THE DEVICE9
- 4 INFORMATION..... 12
- 5 GRIDVIS 7.3 13

These instructions will teach you how to integrate a Janitza measurement device in the GridVis Desktop software.

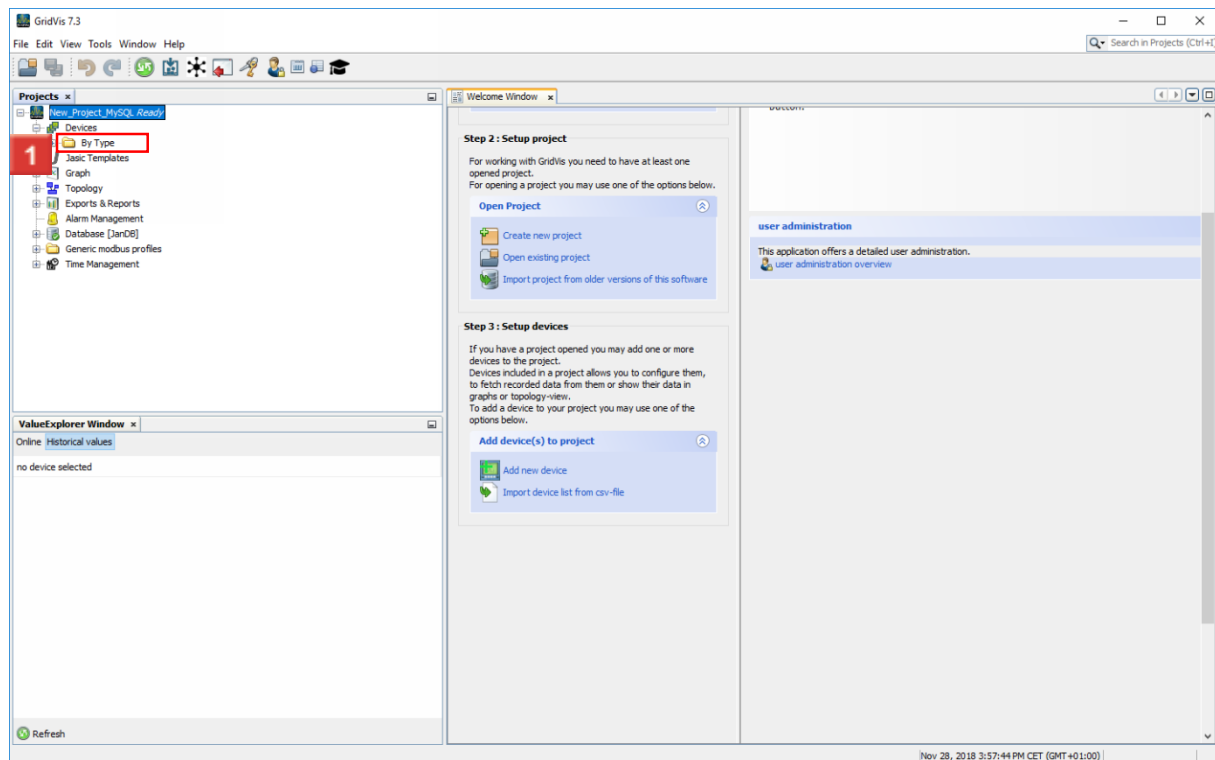
Content

- ▪ Creating a device
- ▪ Connection settings
- ▪ Connection test
-
-
-

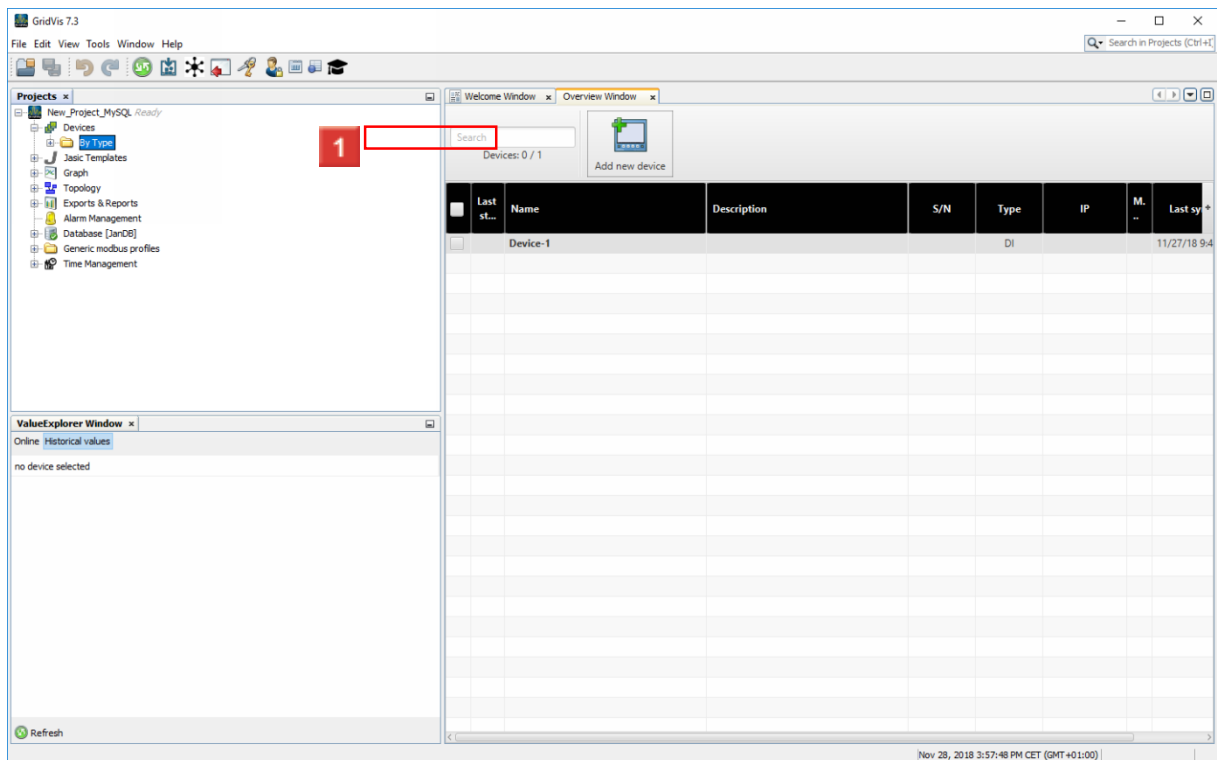
1 Creating a device



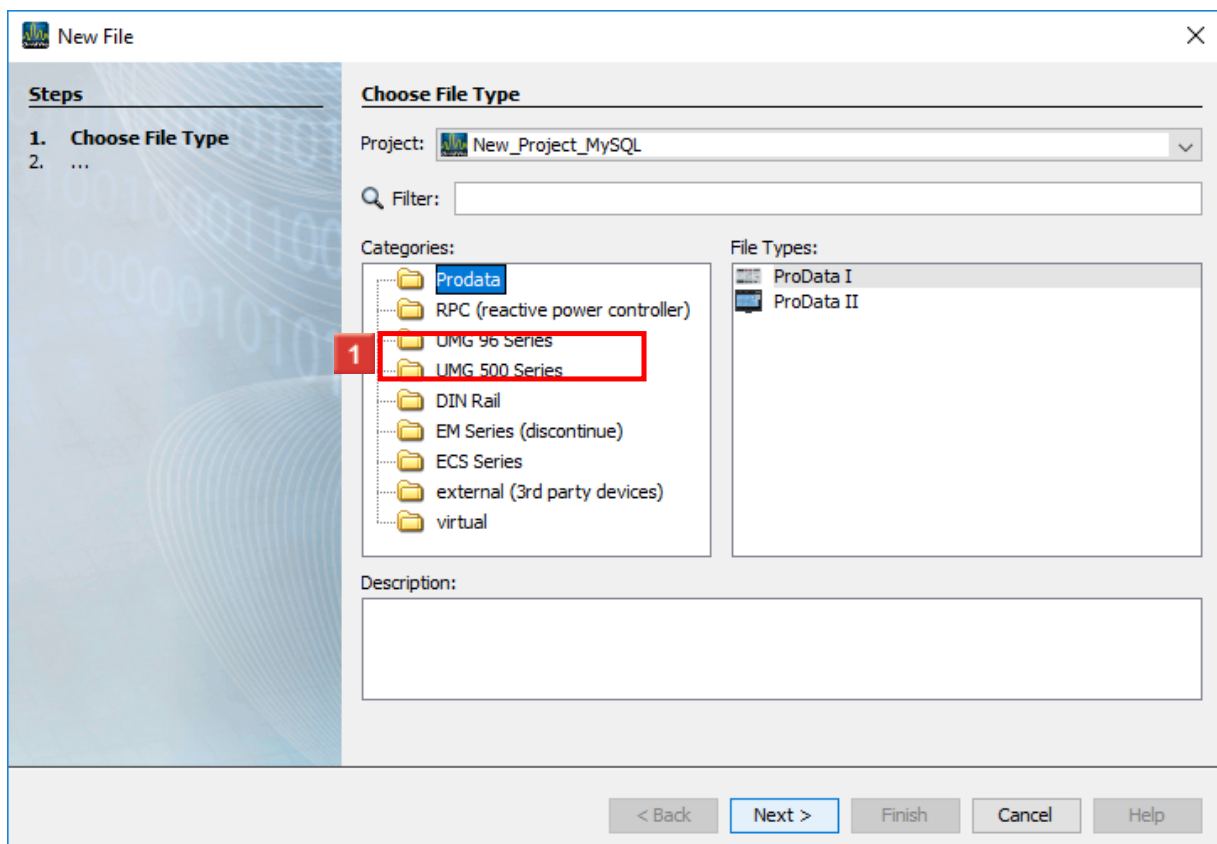
1 Click the **Devices** tree item.



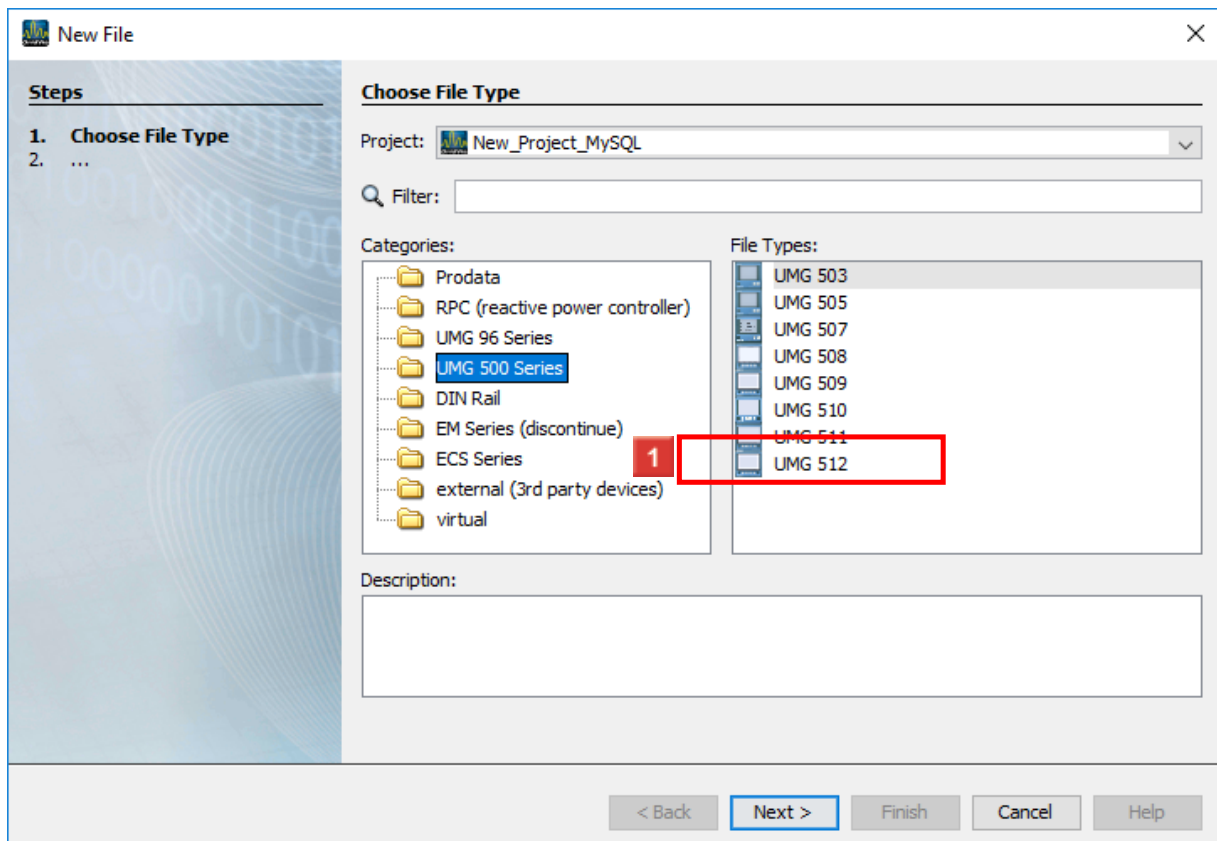
1 Double-click the **By Type** tree item.



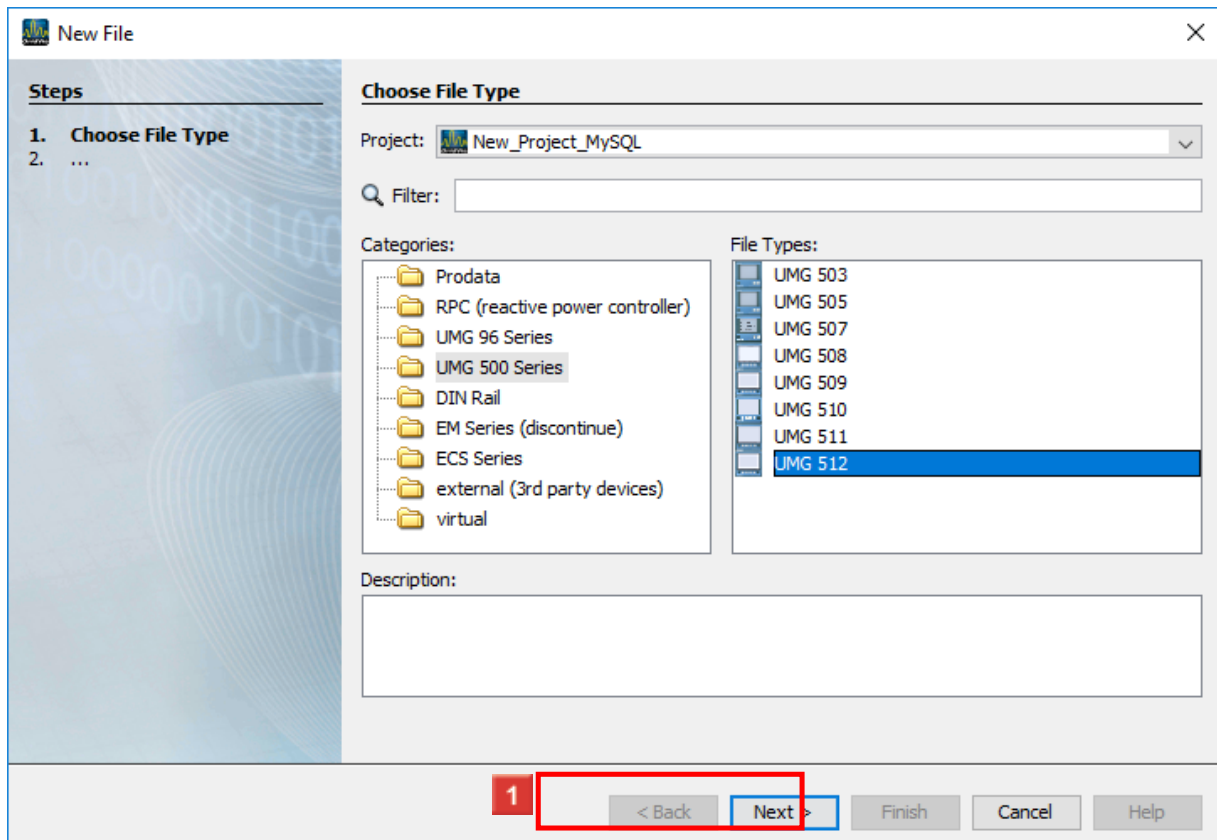
1 Click the **Add new device** button.



1 Click the folder for the appropriate device series.

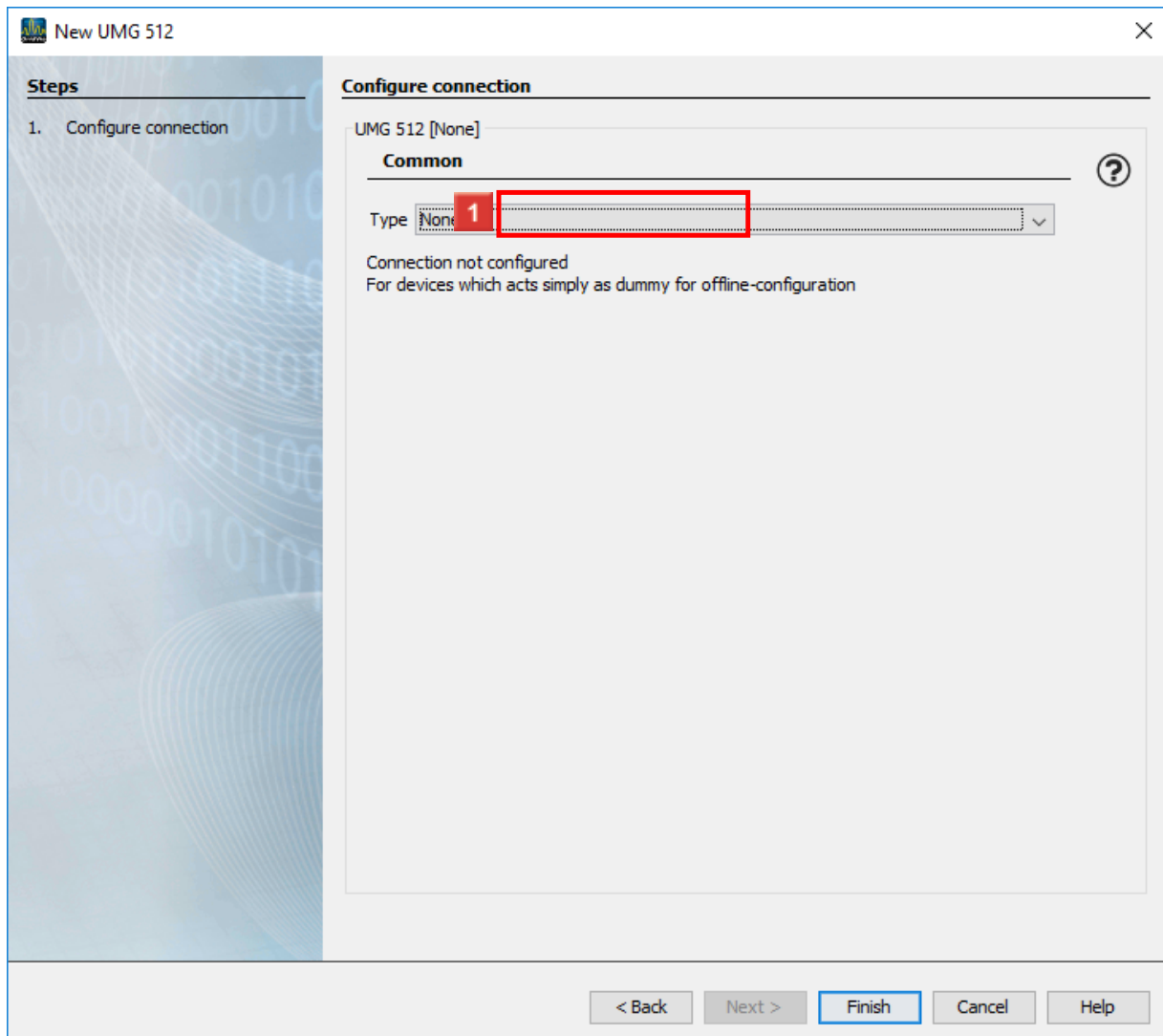


1 Select the corresponding device from the list.

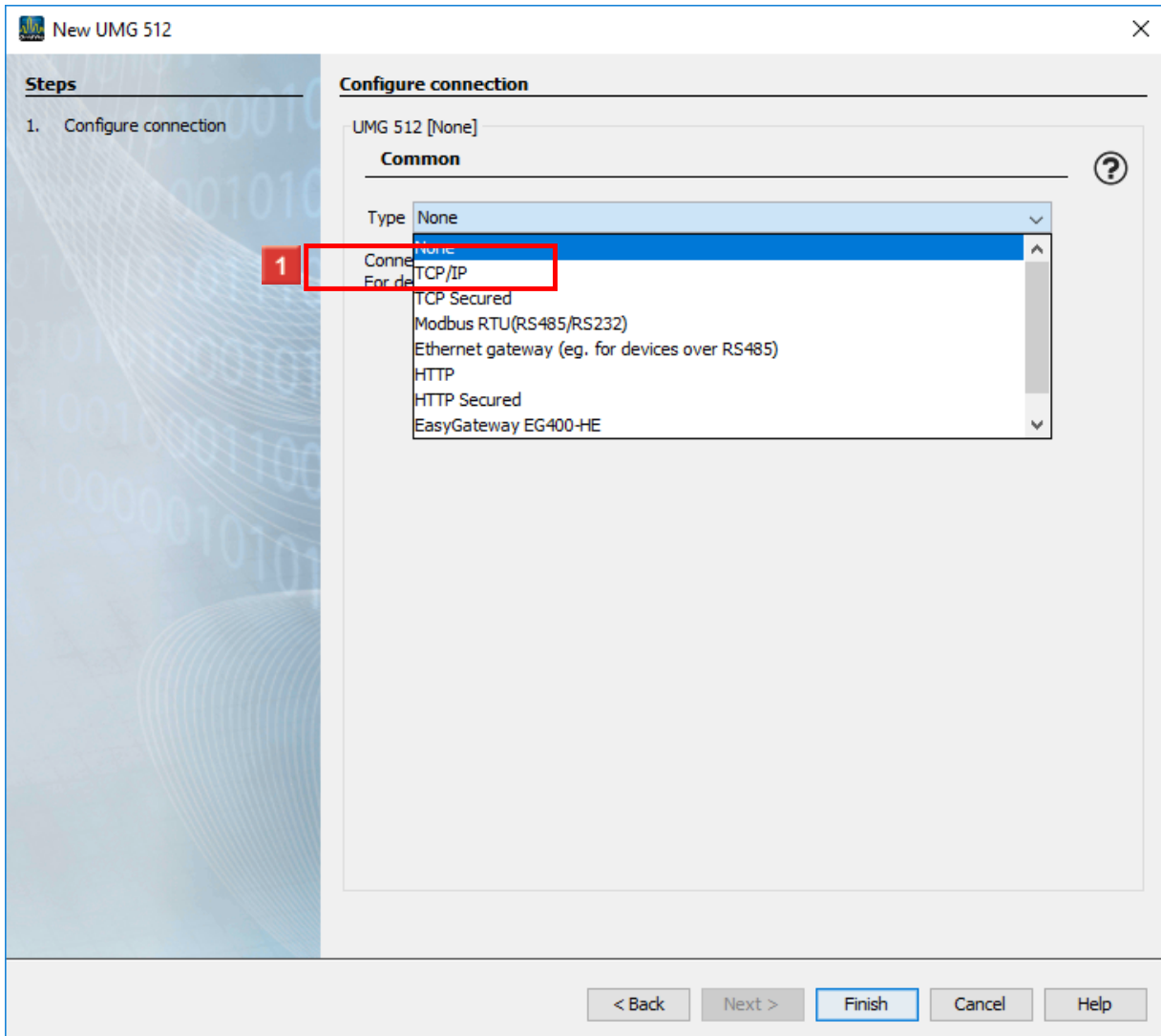


1 Click the **Next** button.

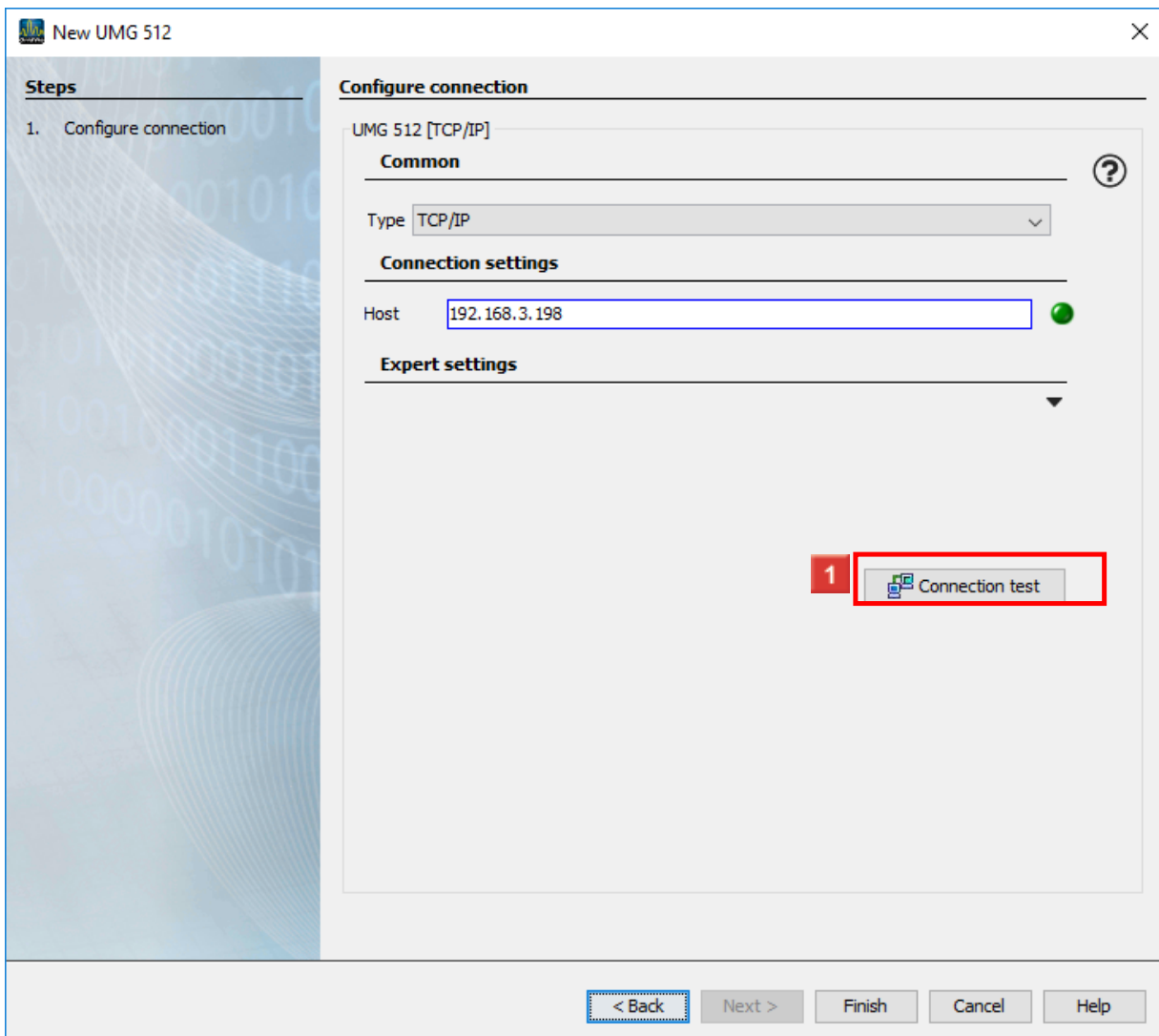
2 Connection configurations



1 Click the **Type** dropdown button.

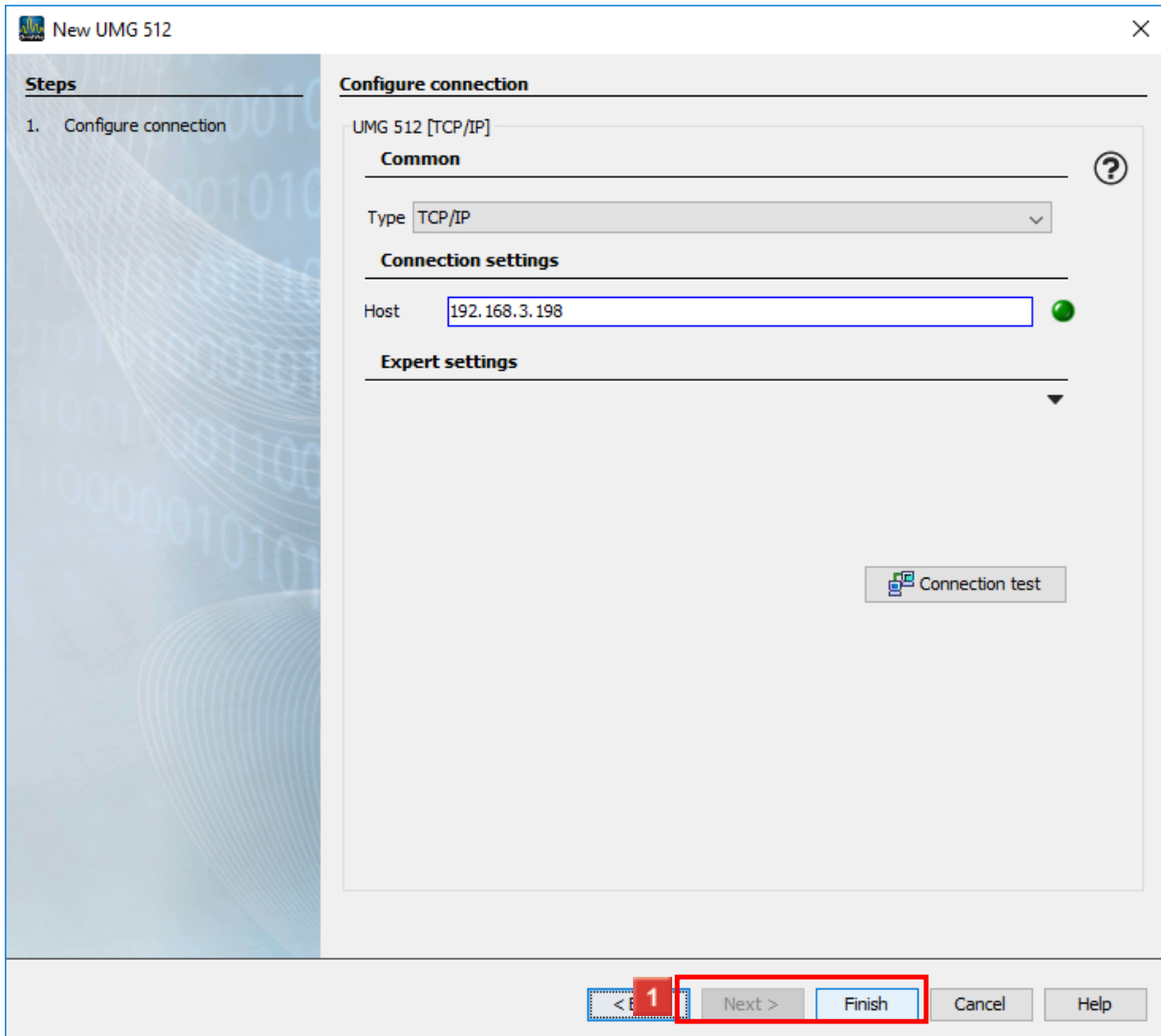


1 Click the **TCP/IP** list item.



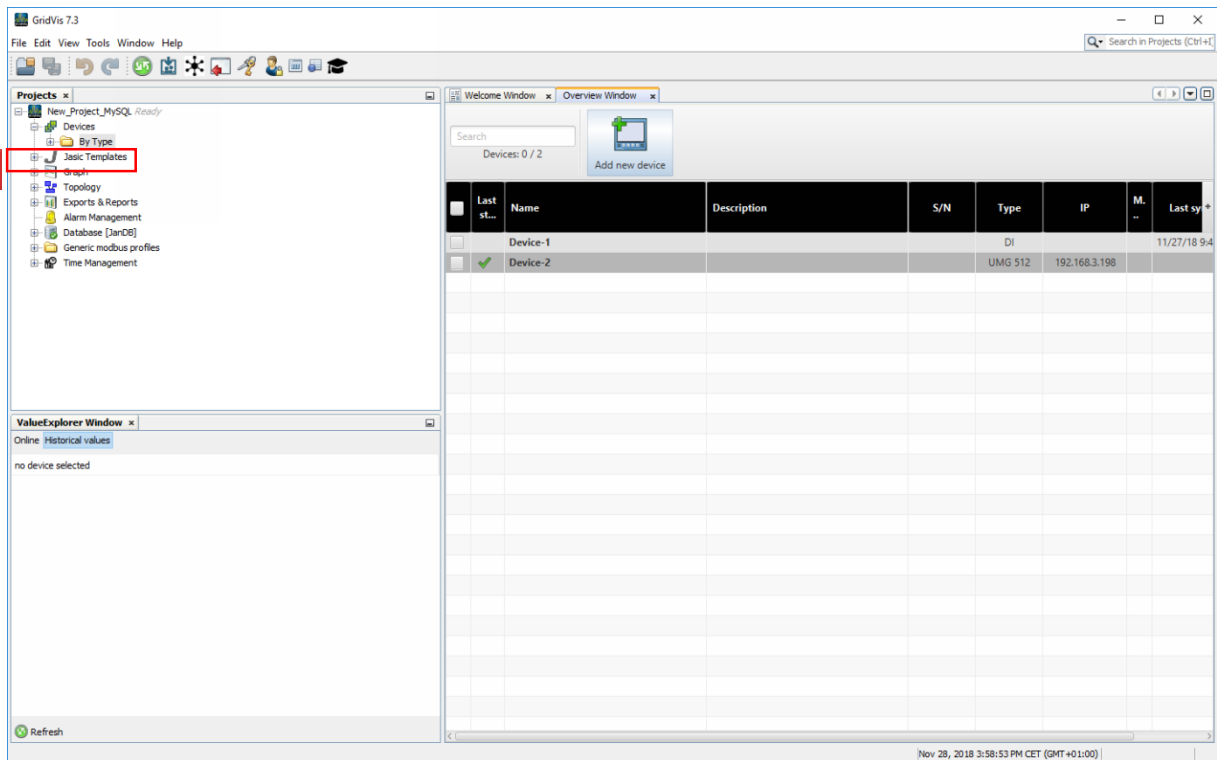
1 Click the **Connection test** button.

i Enter the individual IP address of the device with which you want to connect GridVis

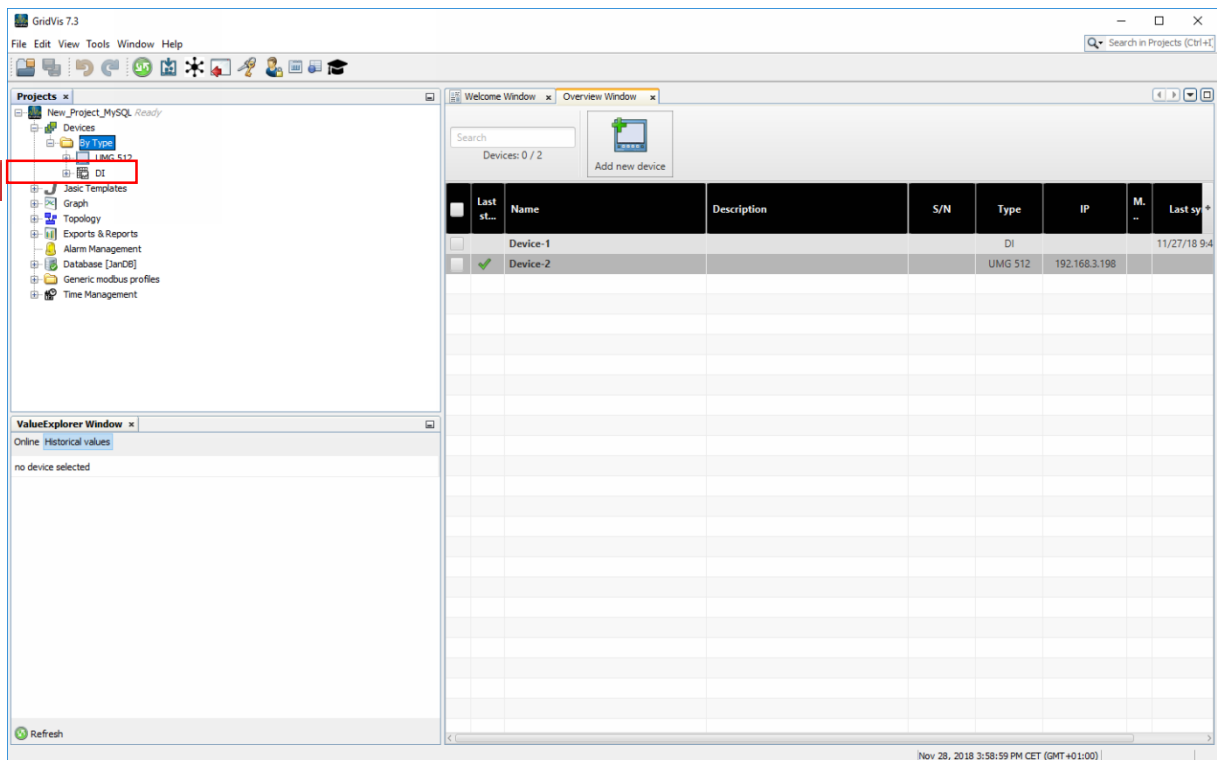


1 Click the **Finish** button.

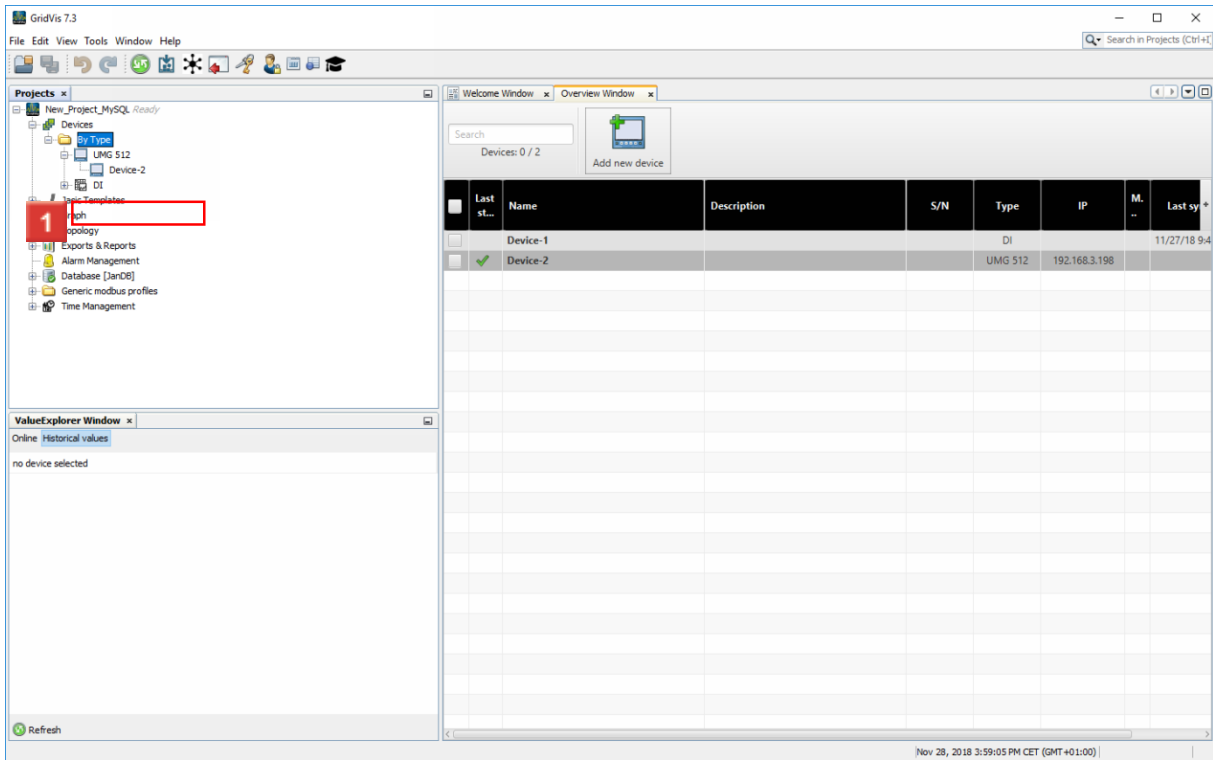
3 Configuring the device



1 Click the **By Type** tree item.

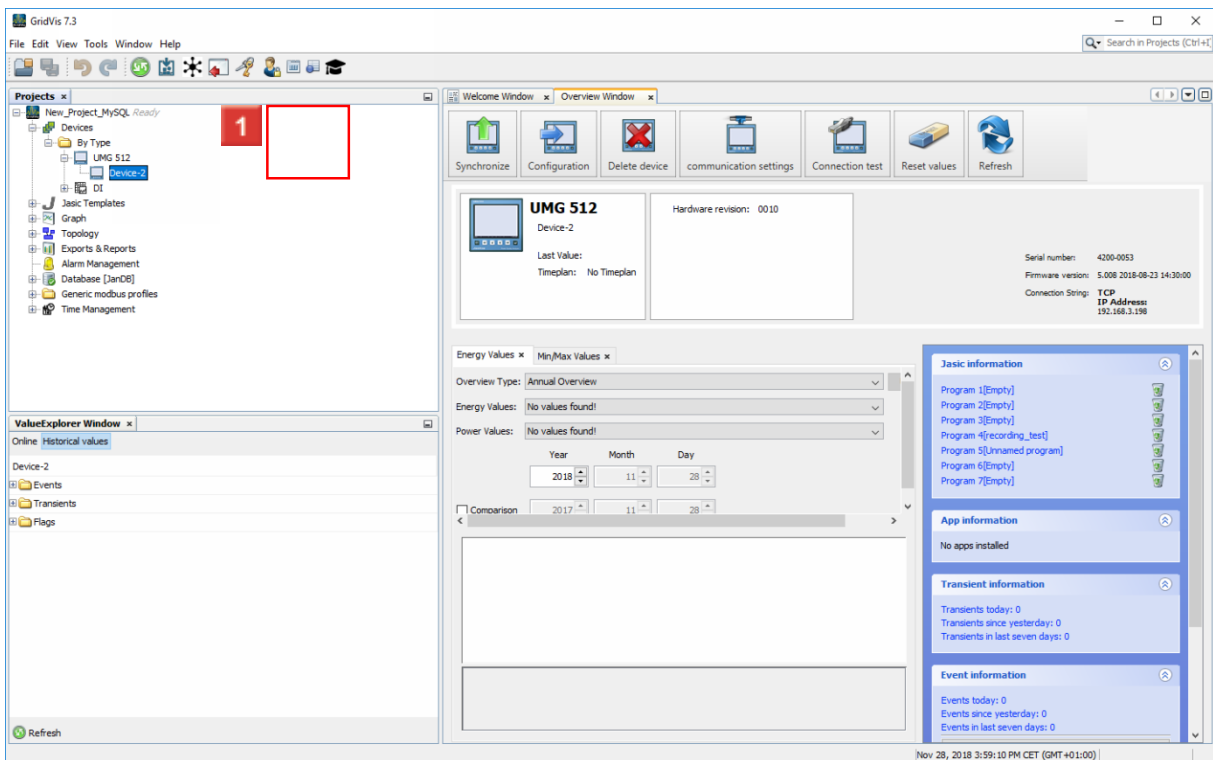


1 Click the **UMG 512** tree item.

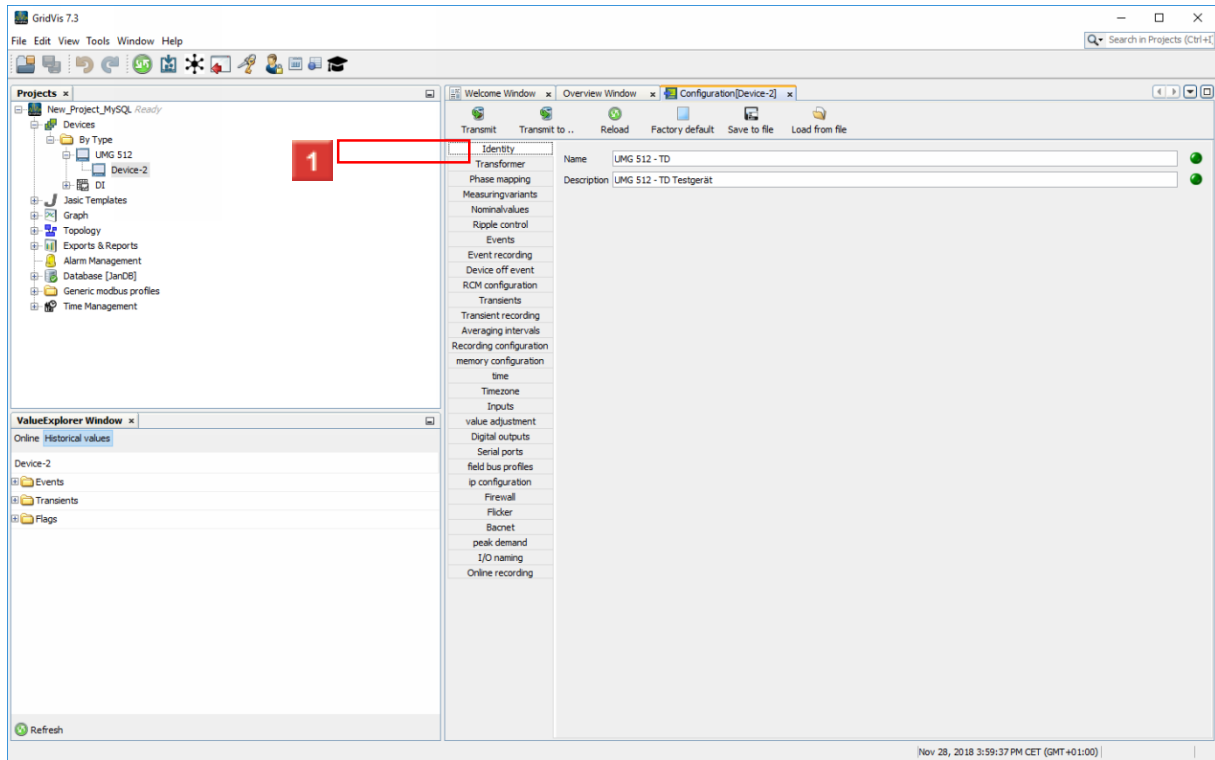


1 Click the **Device-2** tree item.

i New devices are numbered by default. In this case, "Device -2" is your newly created device



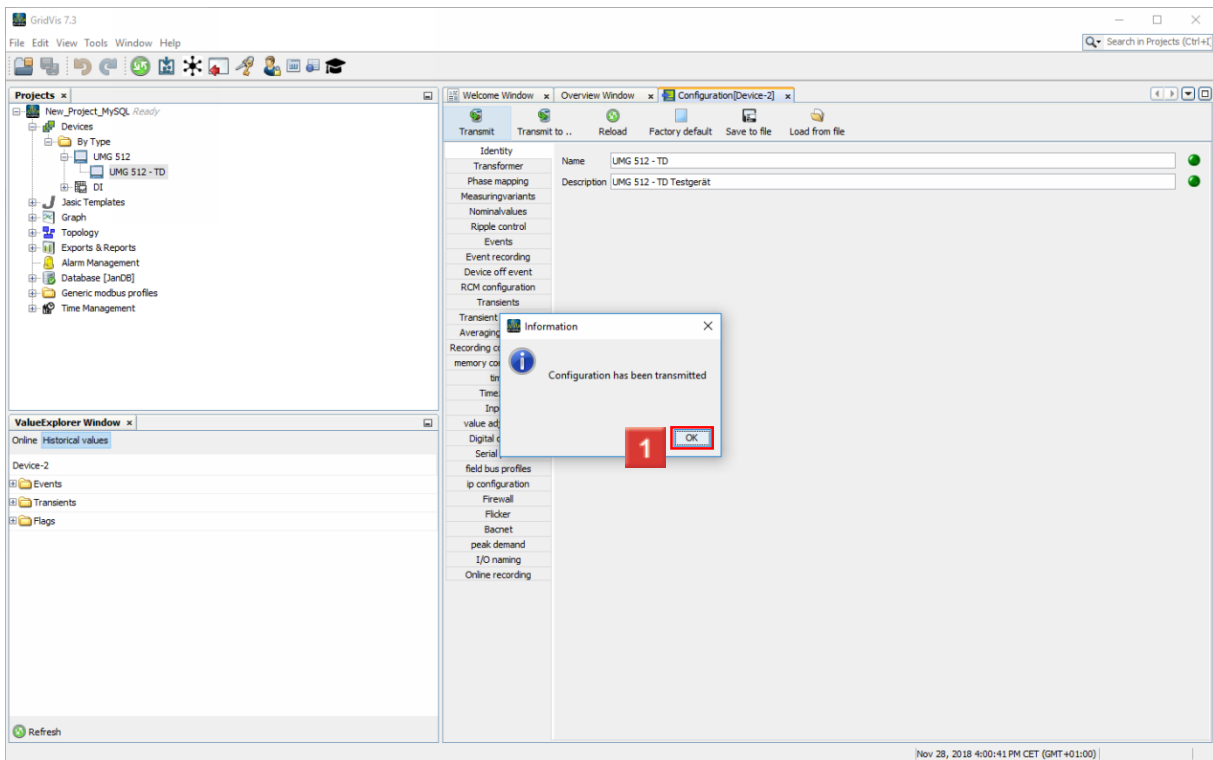
1 Click the **Configuration** button.



1 Click the **Name** input field.

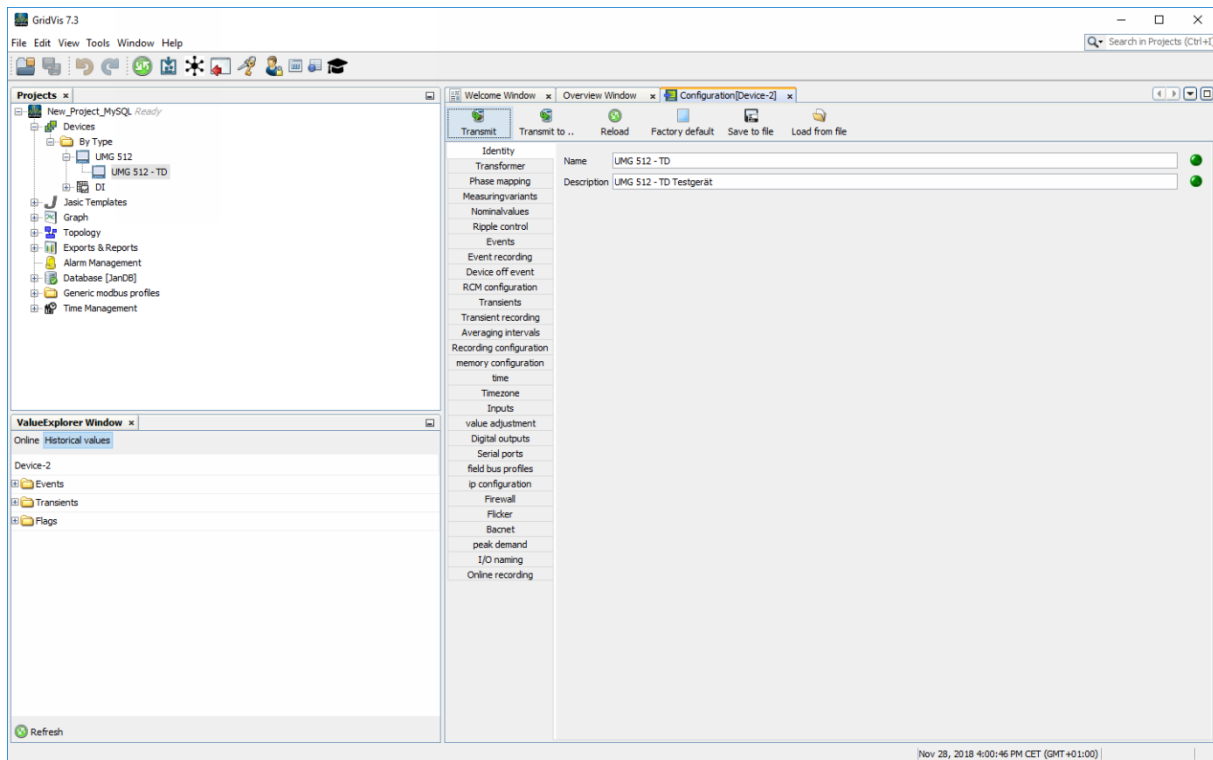
2 Click the **Transmit** button.

4 Information



1 Click the **OK** button.

5 GridVis 7.3



Please enter your text here.

Creating a device

In order to create a device with a connection, it must also be connected to the Internet or the internal network to set up a connection between the device and GridVis.

Configuring the device

If a device is connected to GridVis, you can change its settings and individually adjusted via the "Configure" option.