

# Manual

create user directory



# Table of Contents

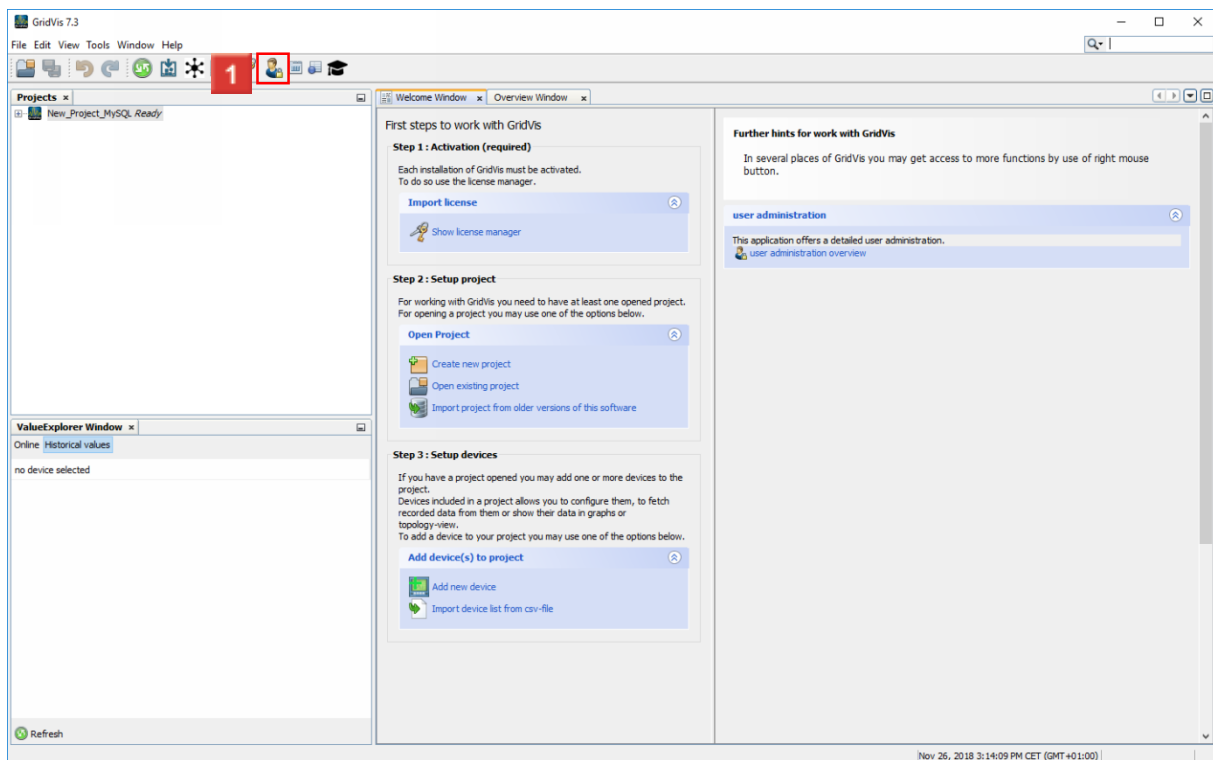
- 1 CREATING A USER DIRECTORY .....2
- 2 CHOOSE MAIN FOLDER OF A JANITZA DB PROJECT .....5
- 3 CREATE A NEW SECURITY REALM .....6
- 4 ADD A NEW USER .....8
- 5 CONNECT PROJECT TO USER ADMINISTRATION.....15
- 6 SUMMARY .....20

These instructions explain how to work with the user administration in the GridVis Desktop software.

#### Content

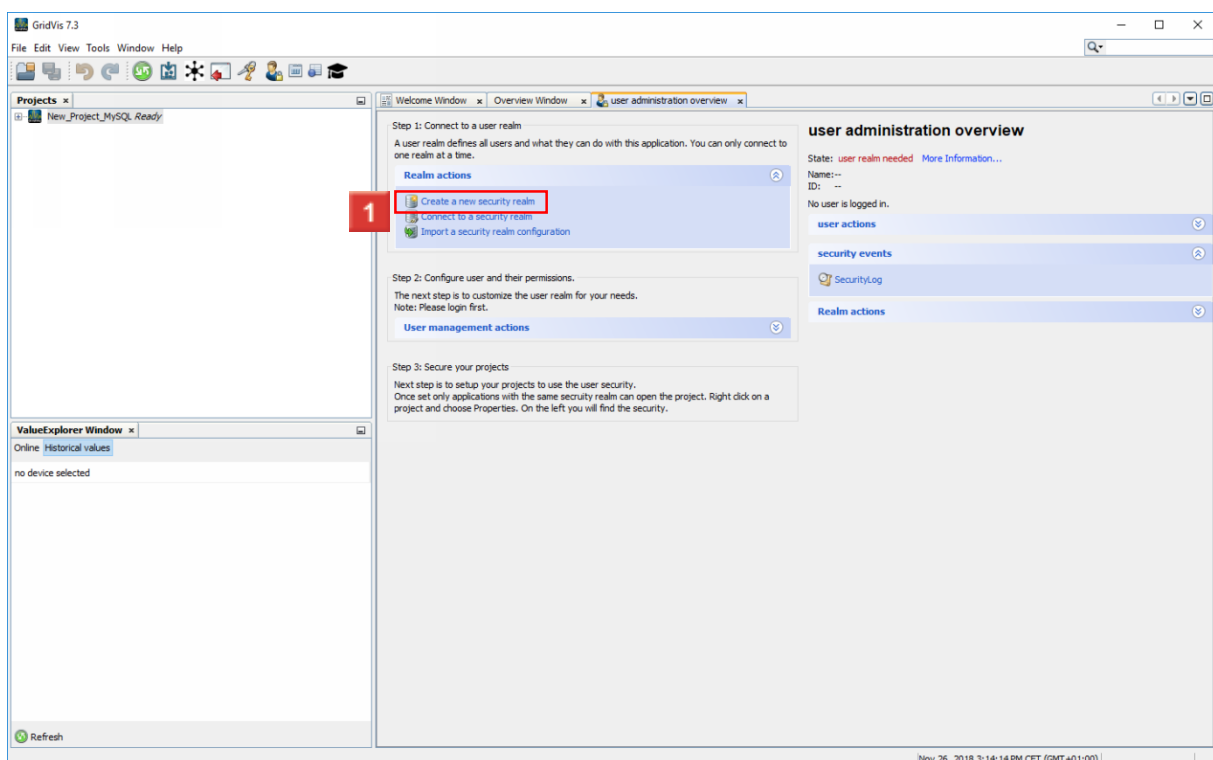
- ▪ Creating a user directory
- ▪ Creating an admin
- ▪ Creating a read-only user.
- ▪ Connecting a project to the user directory

# 1 Creating a user directory

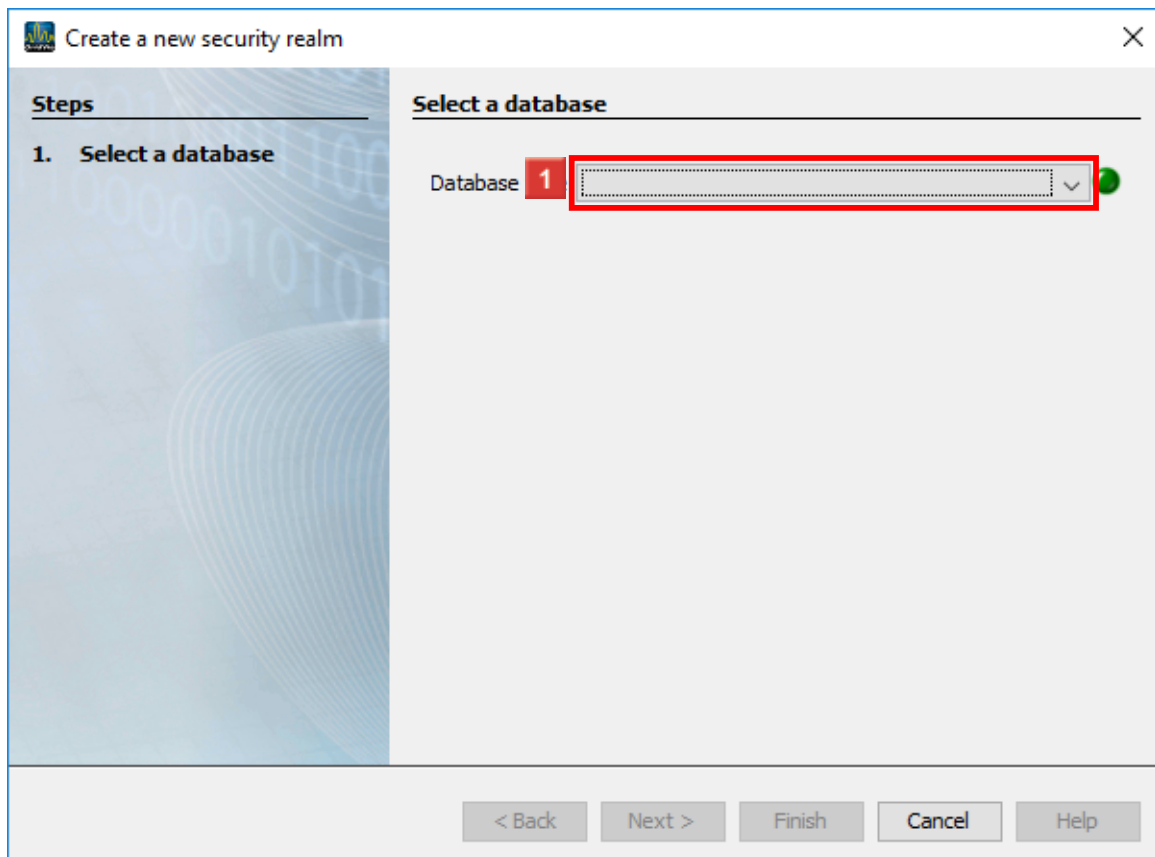


1 Click the **user administration overview** button.

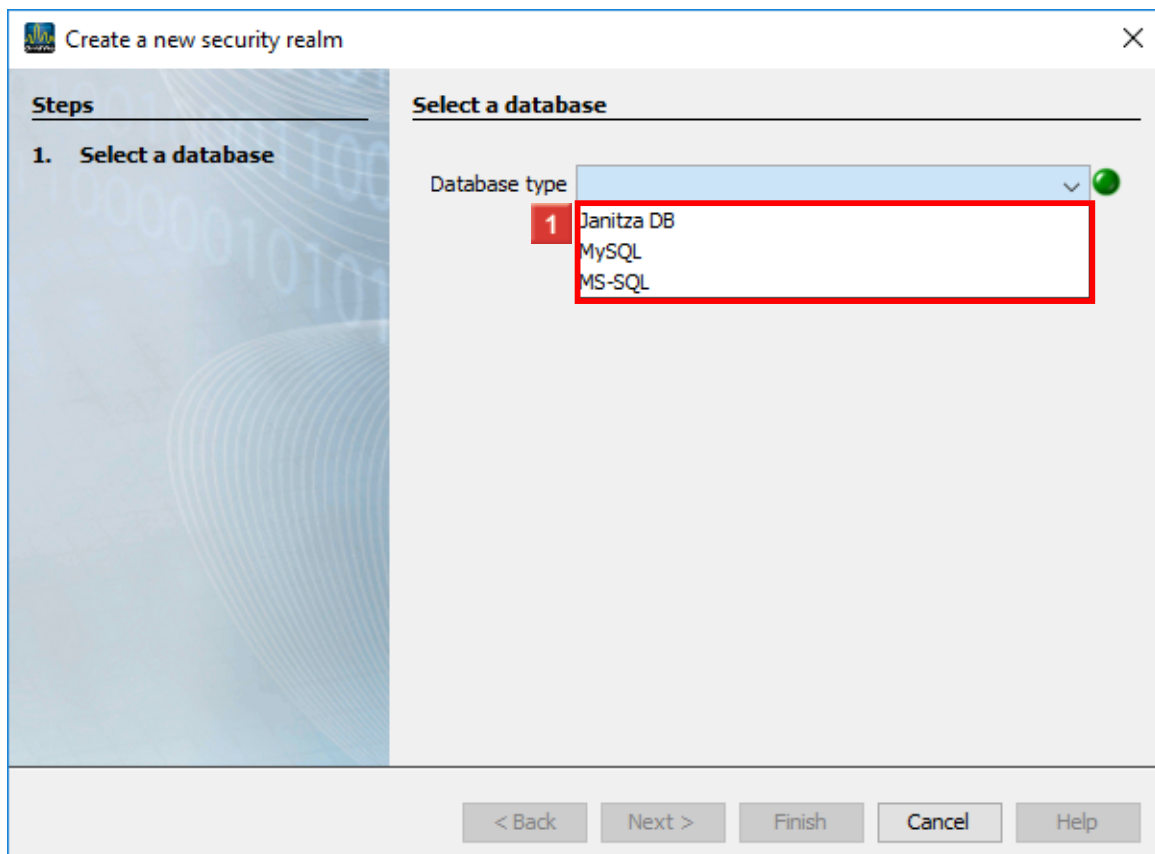
**i** If you connect your GridVis installation to a user directory, you must be logged in to this directory for certain actions.



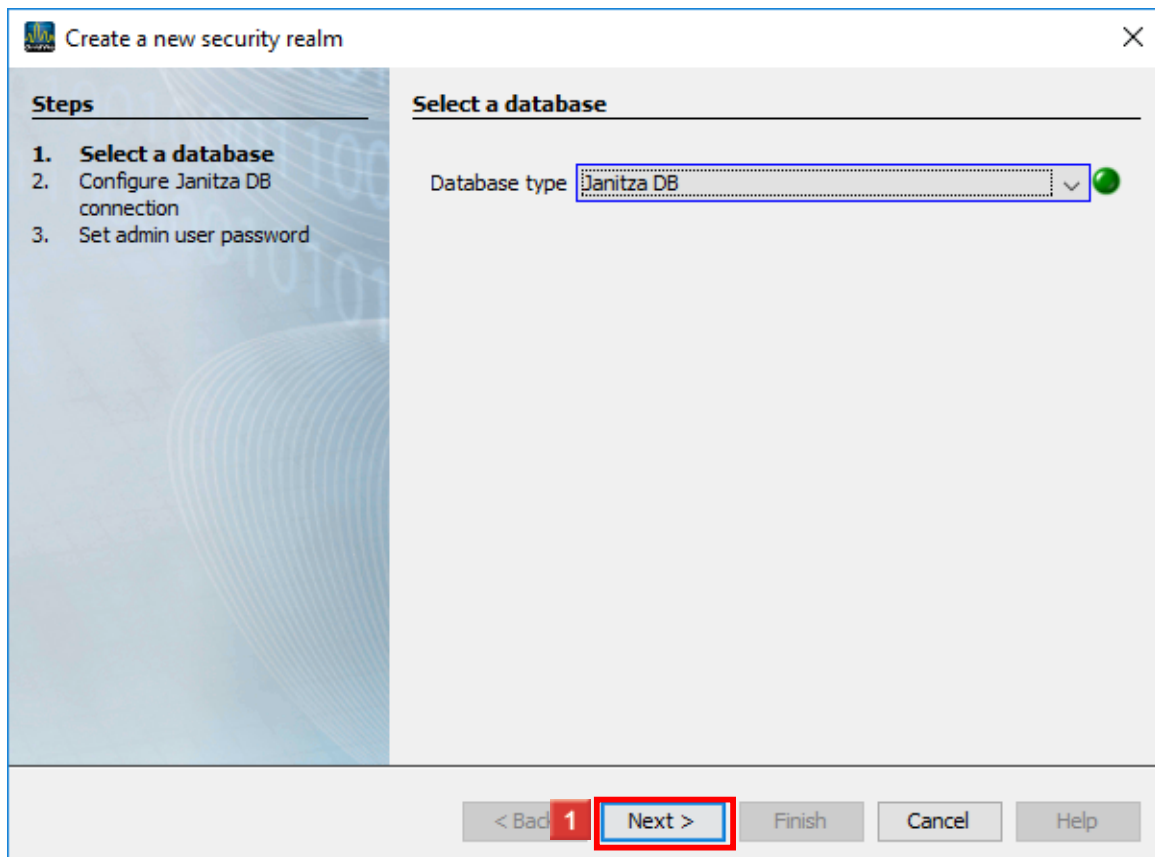
1 Click the **Create a new security realm** hyperlink.



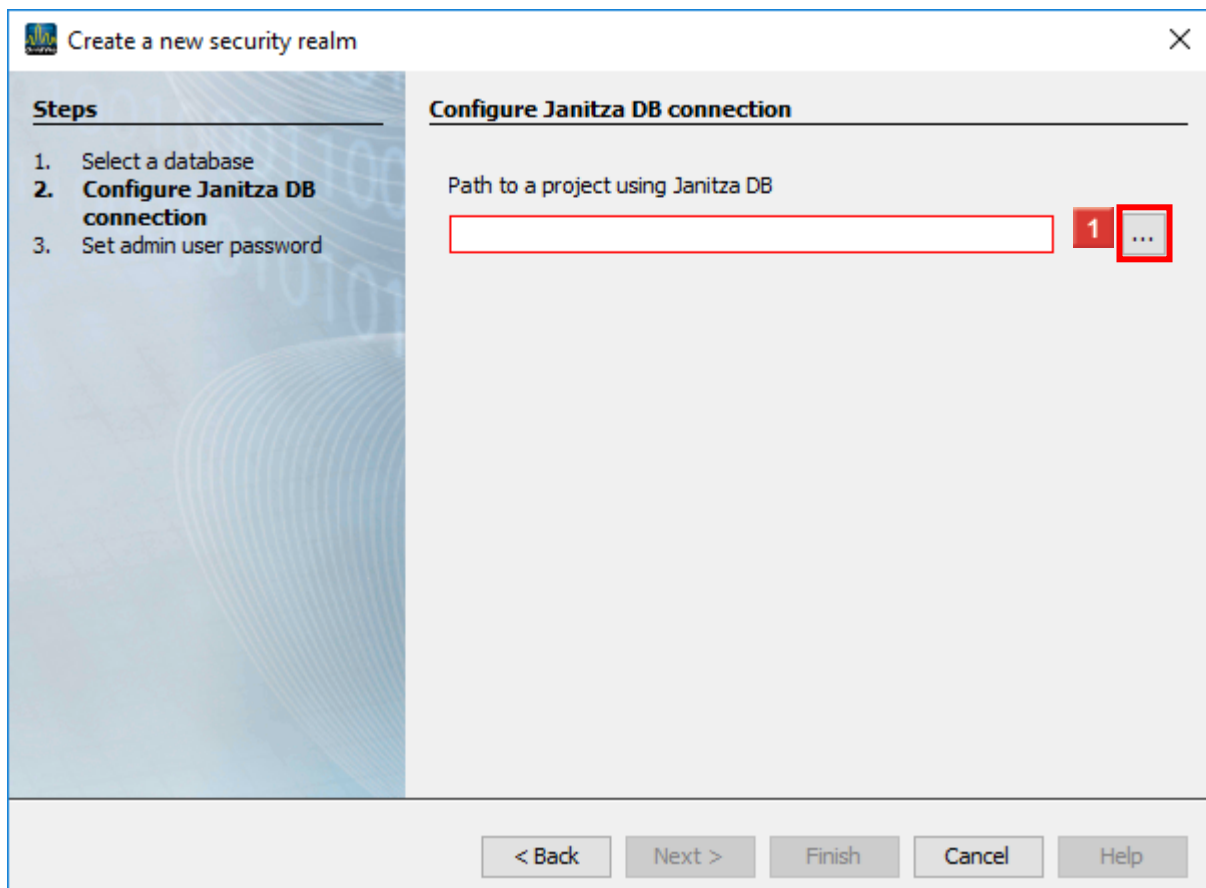
1 Click the **Database type** dropdown button.



1 Select the desired database type from the list.

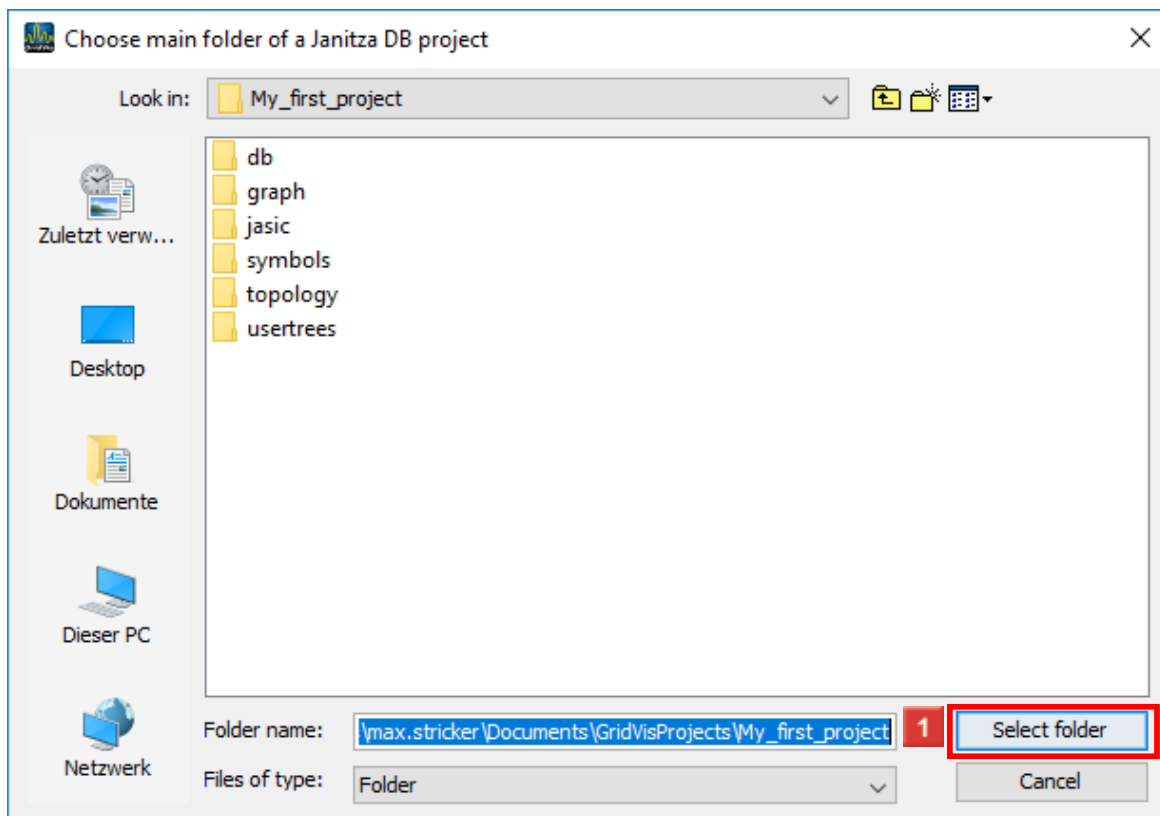


**1** Click the **Next** button.

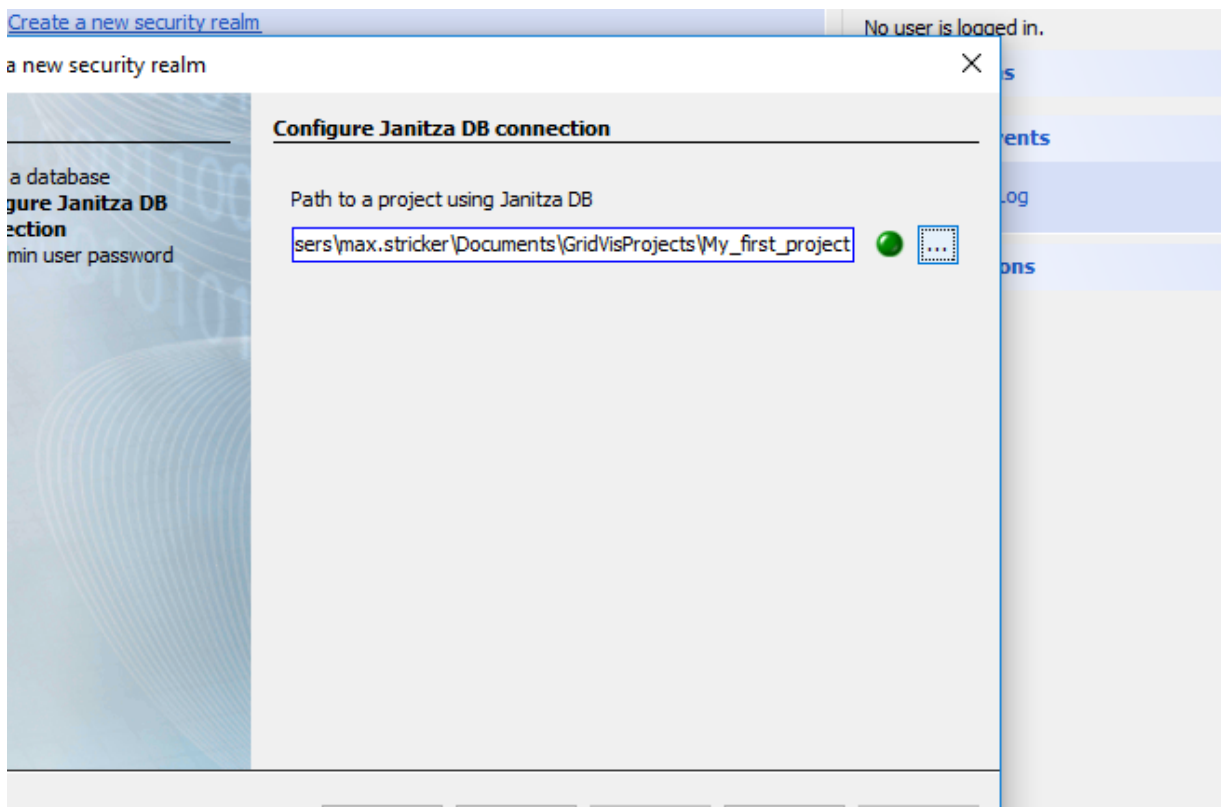


**1** Click the **Search file path** button.

## 2 Choose main folder of a Janitza DB project



1 Choose a project folder and click the **Select folder** button.



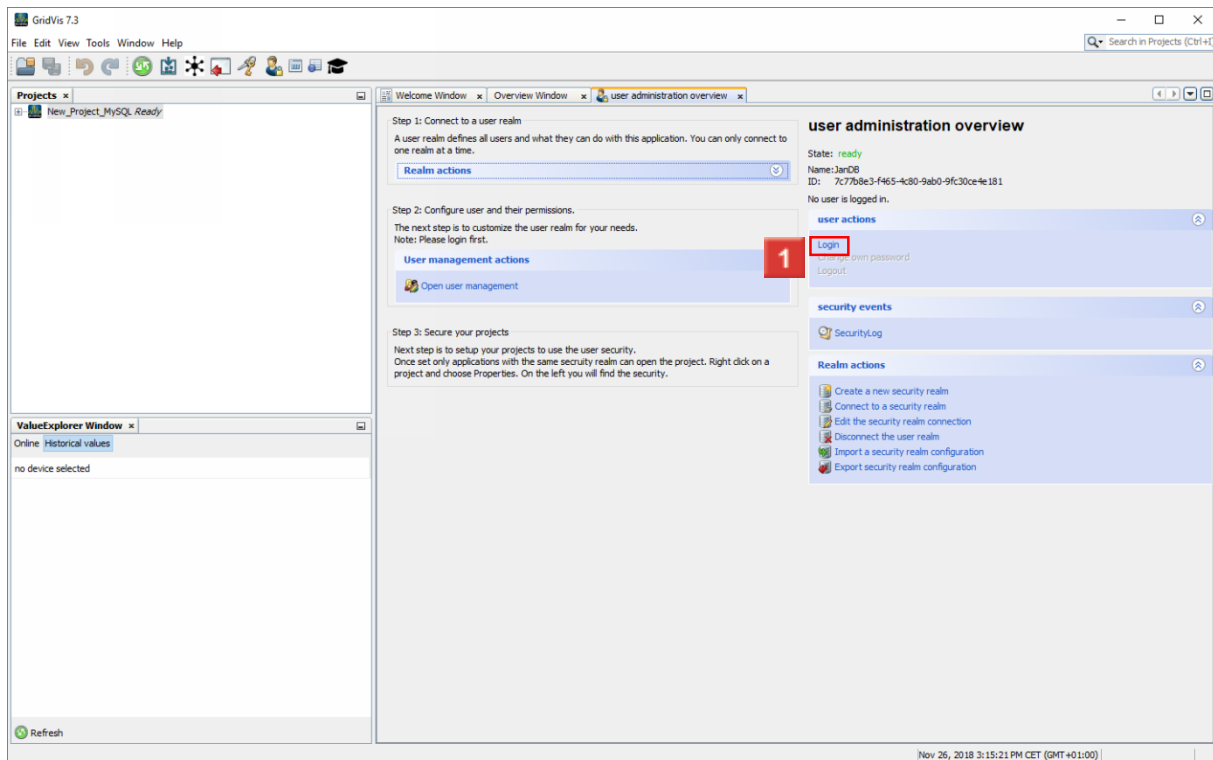
1 Click the **Next** button.

### 3 Create a new security realm

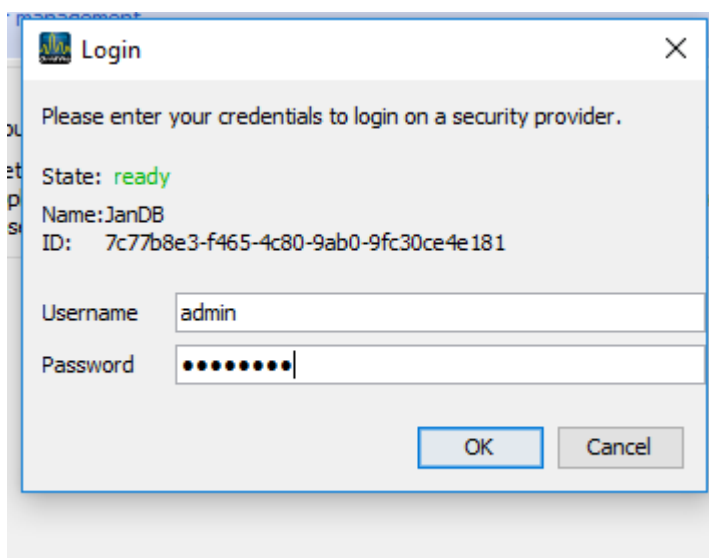
**2** Enter the desired password in the **Password** input field and repeat this in the **Verify password** input field.

Click the **Finish** button.

**i** A new user directory is automatically created with the administrator user **admin**.



**1** Click the **Login** hyperlink.



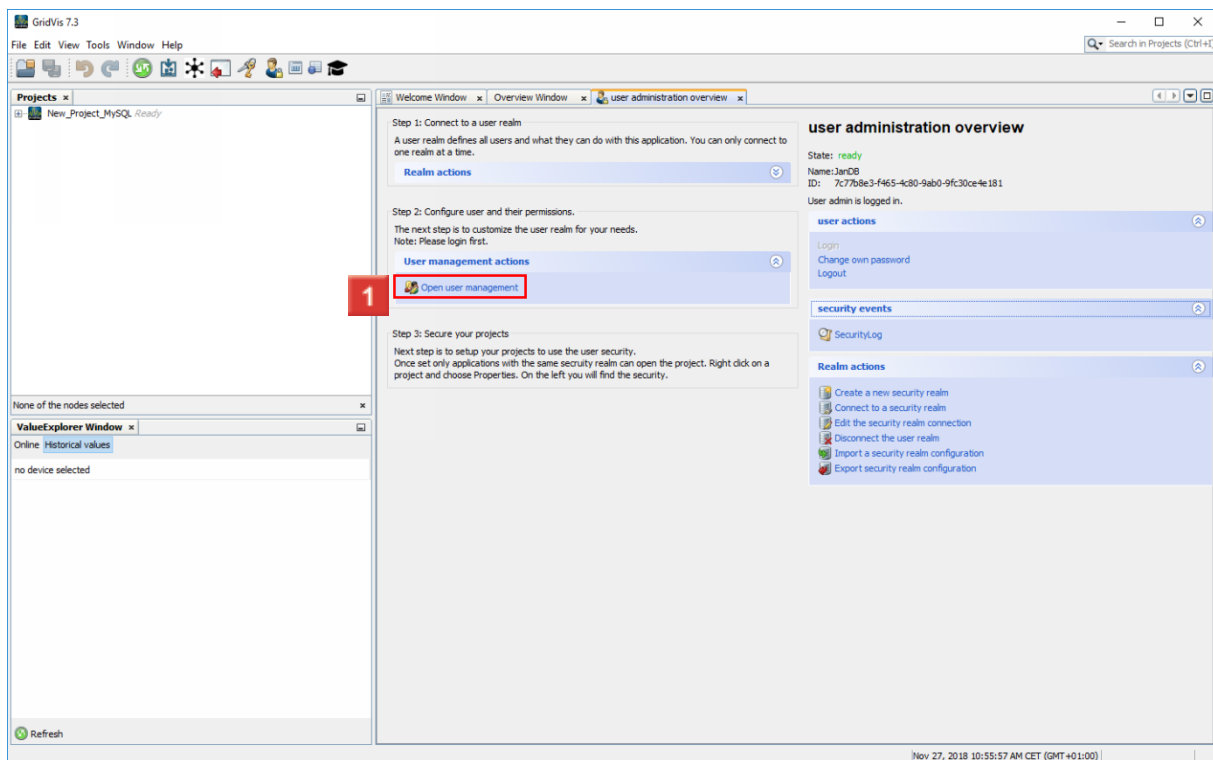
**1** Enter the user name and the chosen password.  
Click the **OK** button.



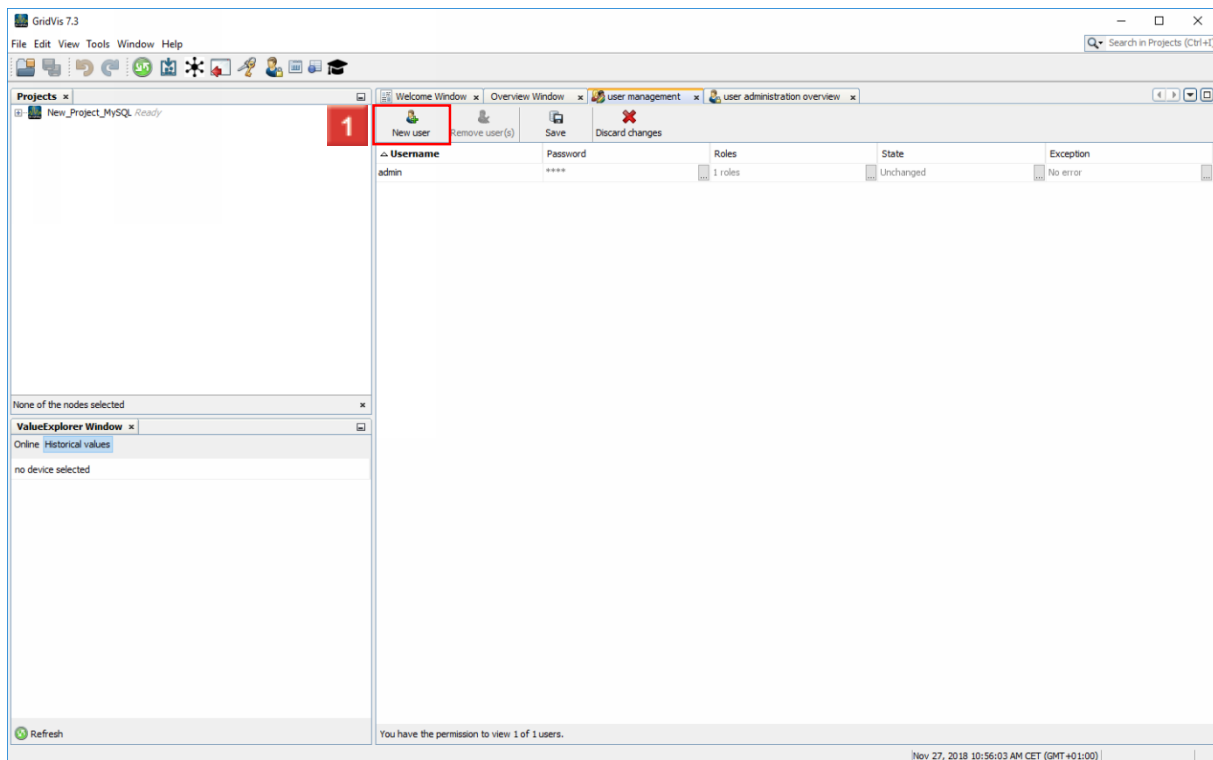
**2** Click the **OK** button.

**i** The user name of the default administration user is admin.

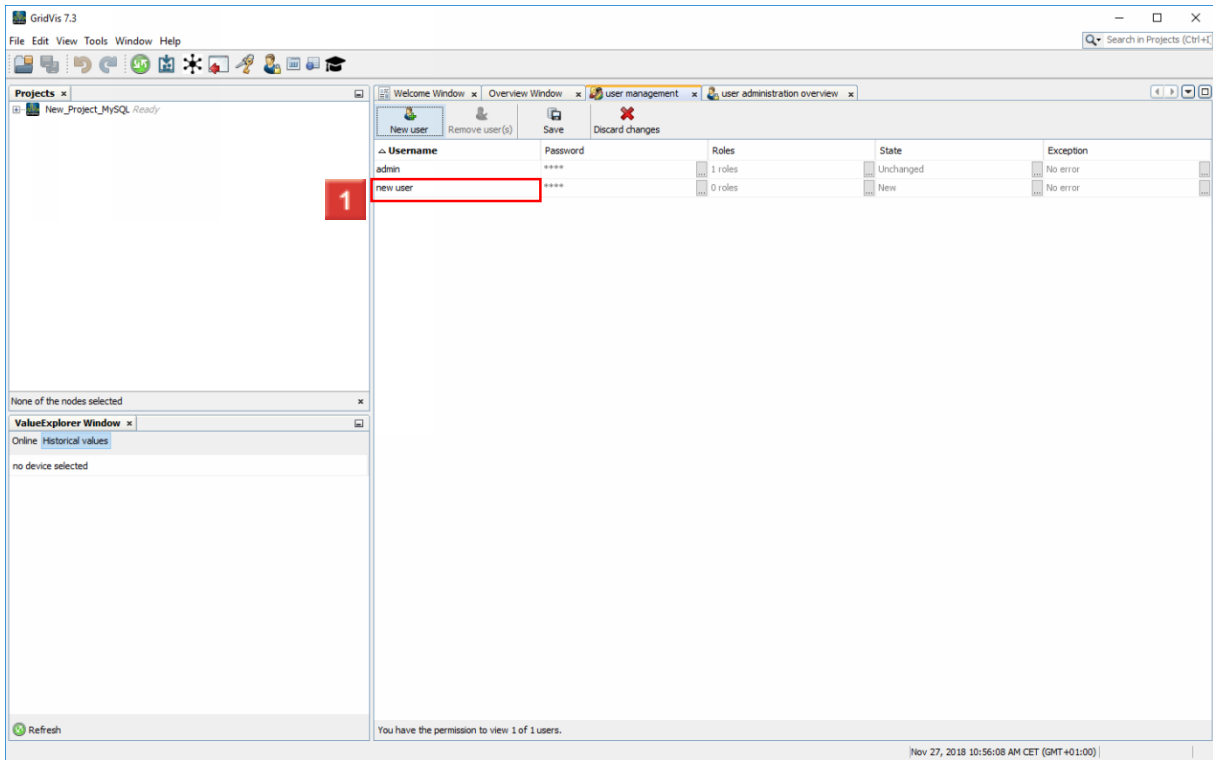
## 4 Add a new user



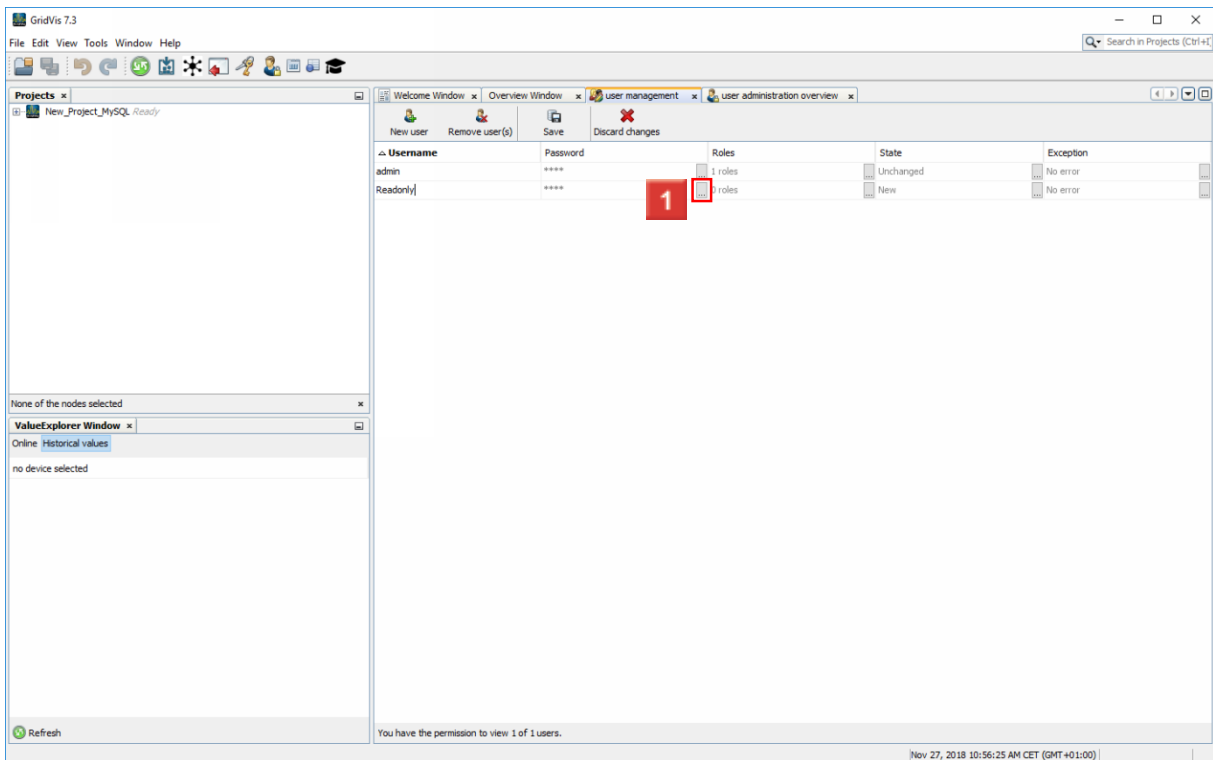
**1** To add, configure and remove users, click the **Open user management** hyperlink.



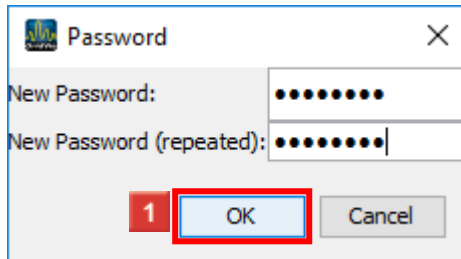
**1** Click the **New user** button.



1 Click the **Username** input field.

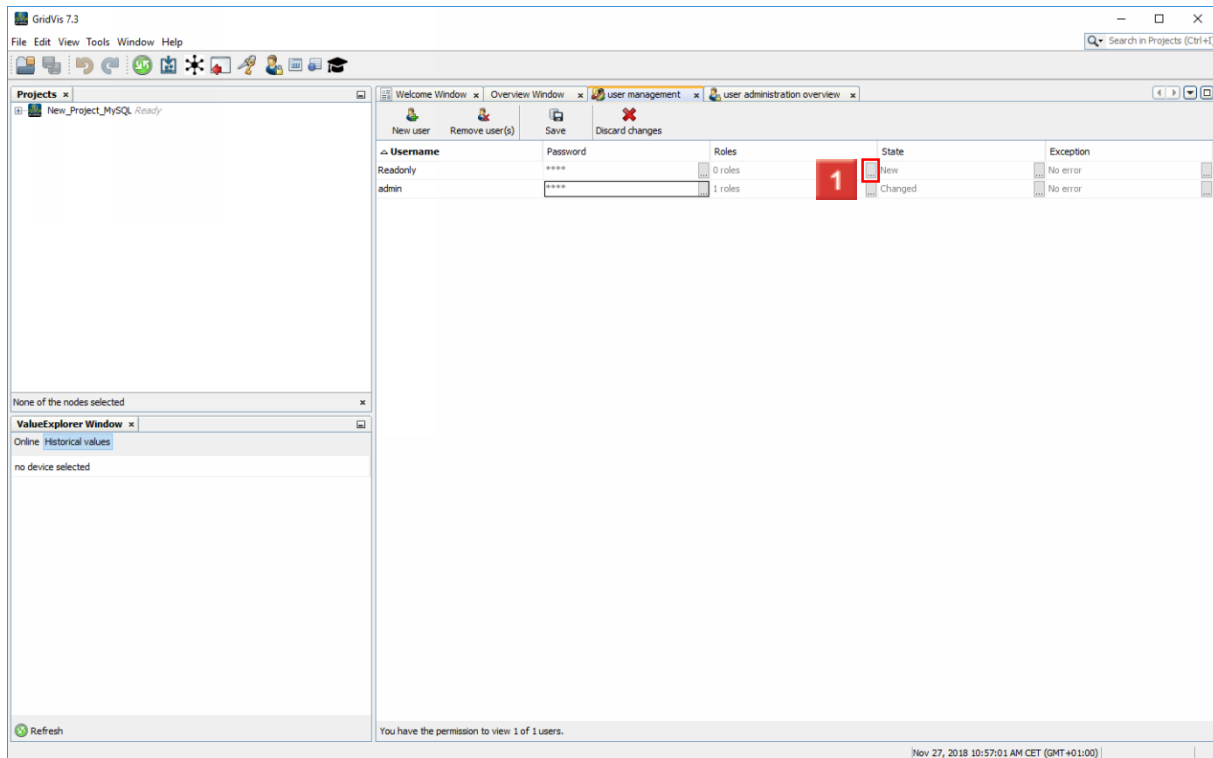


1 Click the **change password** button.



A dialog box titled "Password" with a close button (X) in the top right corner. It contains two input fields: "New Password:" and "New Password (repeated):". Both fields contain eight black dots representing a masked password. Below the input fields are three buttons: a red square with the number "1", a blue "OK" button, and a grey "Cancel" button. The "OK" button is highlighted with a red rectangular border.

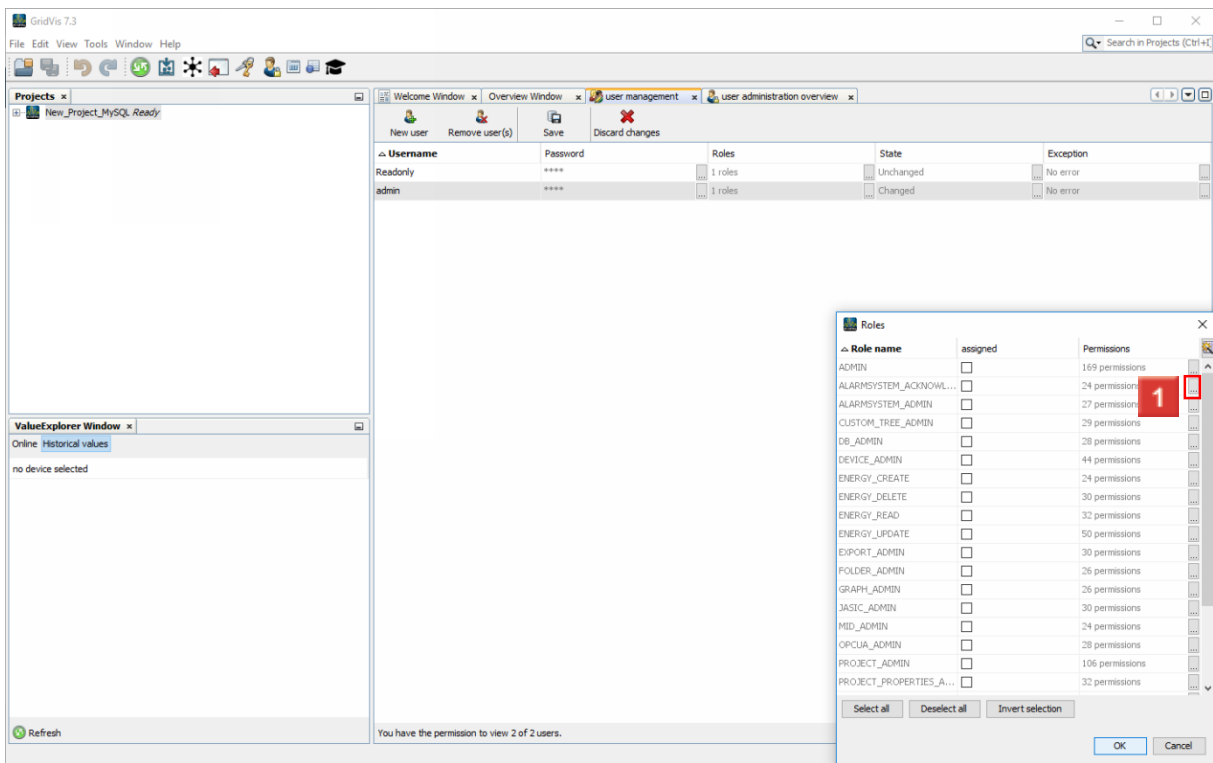
**1** After choosing and repeating a new password in the input fields, click the **OK** button.



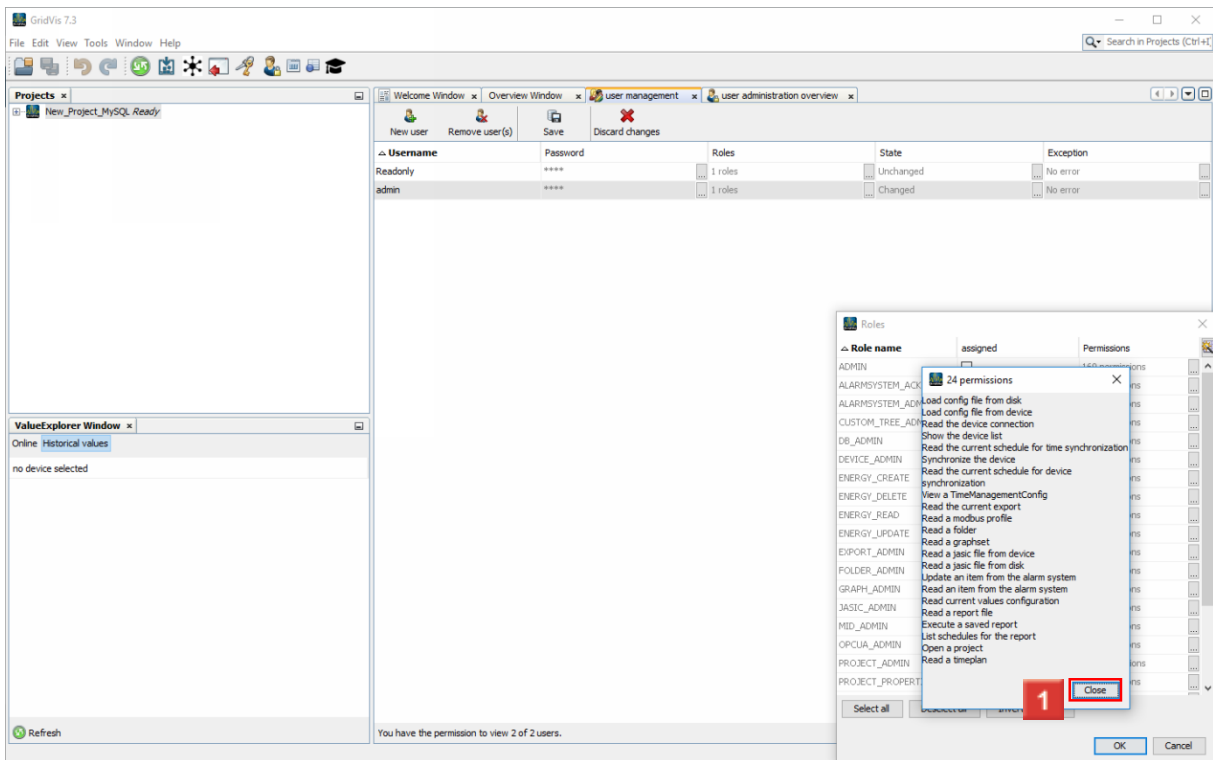
The screenshot shows the GridVis 7.3 user management interface. The main window is titled "user management" and contains a table with the following columns: Username, Password, Roles, State, and Exception. The table lists two users: "Readonly" and "admin". The "admin" user has 1 role and its state is "Changed". A red square with the number "1" is placed over the "State" column for the "admin" user. The interface also includes a toolbar with buttons for "New user", "Remove user(s)", "Save", and "Discard changes". The status bar at the bottom indicates "You have the permission to view 1 of 1 users." and the date/time is "Nov 27, 2018 10:57:01 AM CET (GMT+01:00)".

Username	Password	Roles	State	Exception
Readonly	****	0 roles	New	No error
admin	****	1 roles	Changed	No error

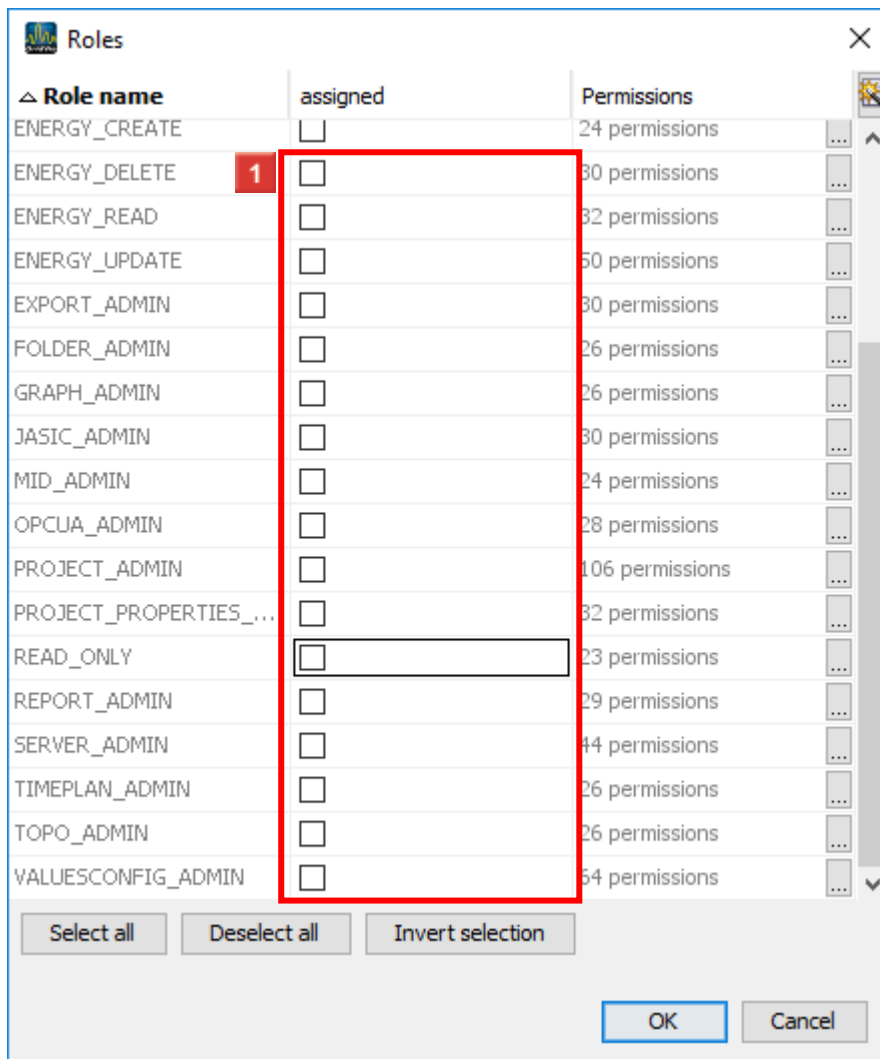
**1** Click the **configure roles** button.



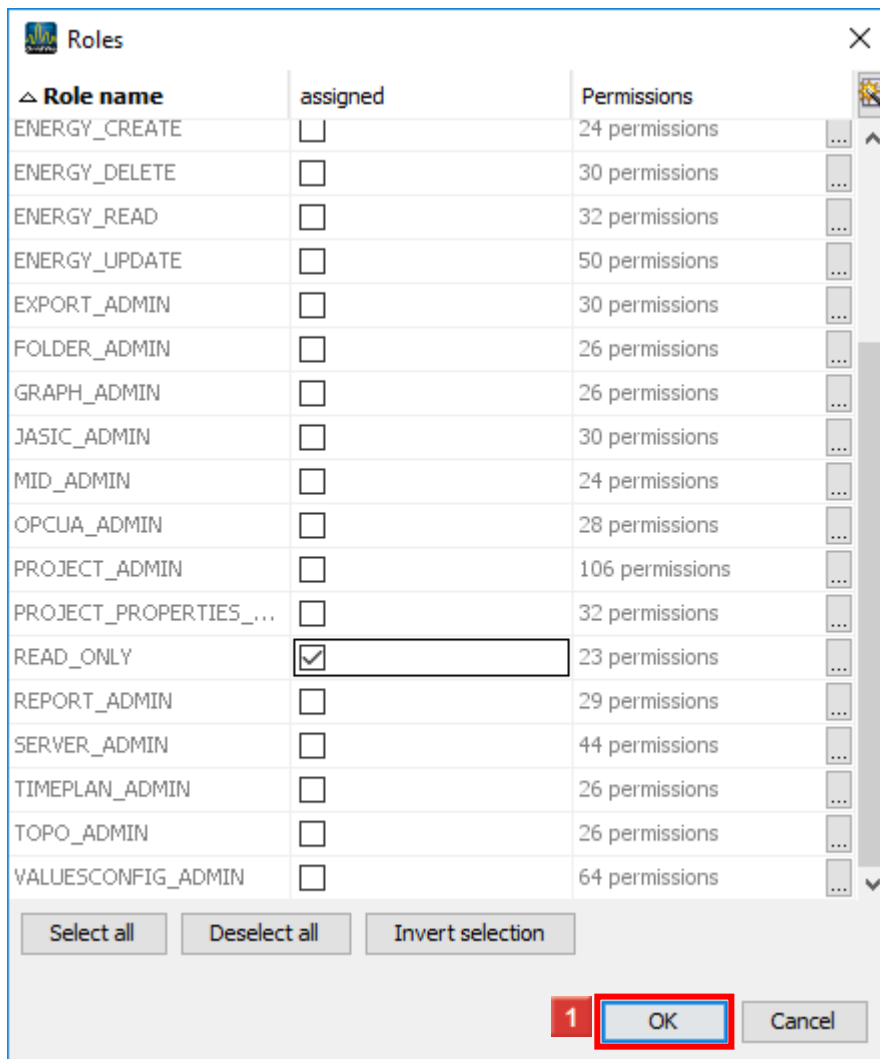
1 Click the **show permissions** button to see the permissions of the corresponding role.



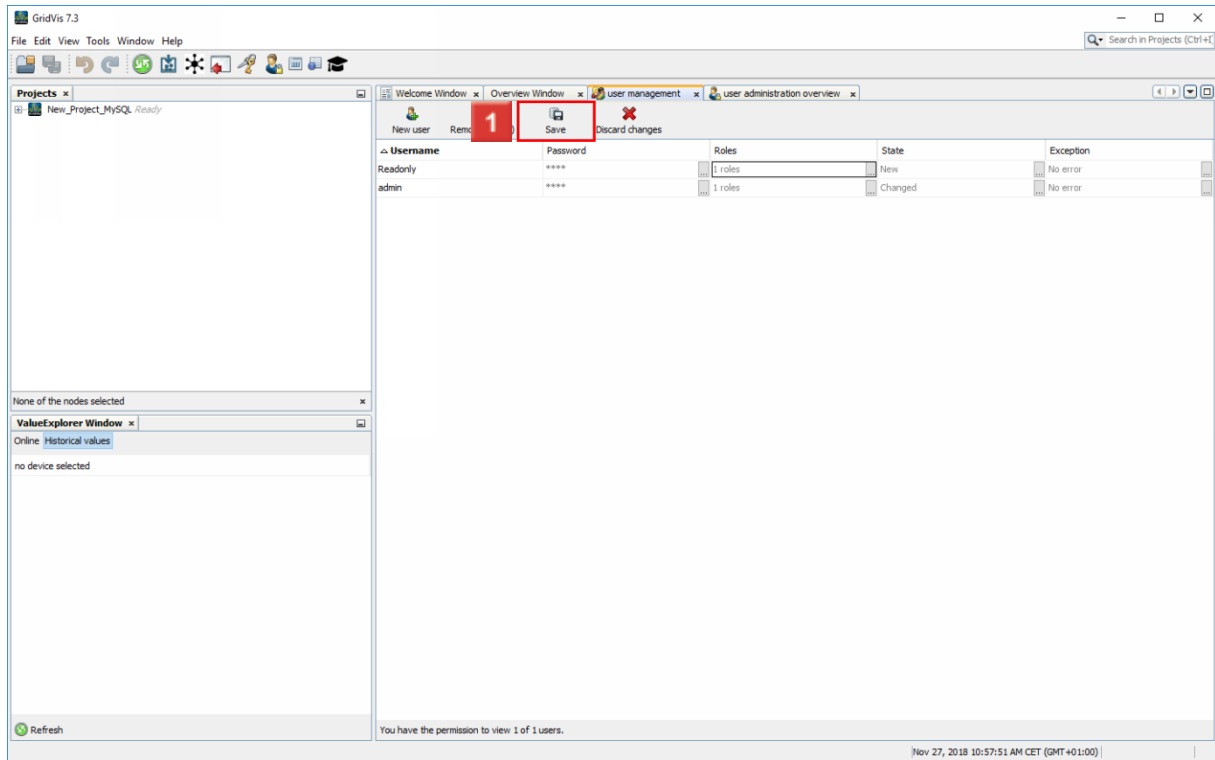
1 Click the **Close** button.



**1** Select the desired roles from the list using the checkbox.



1 Click the **OK** button.



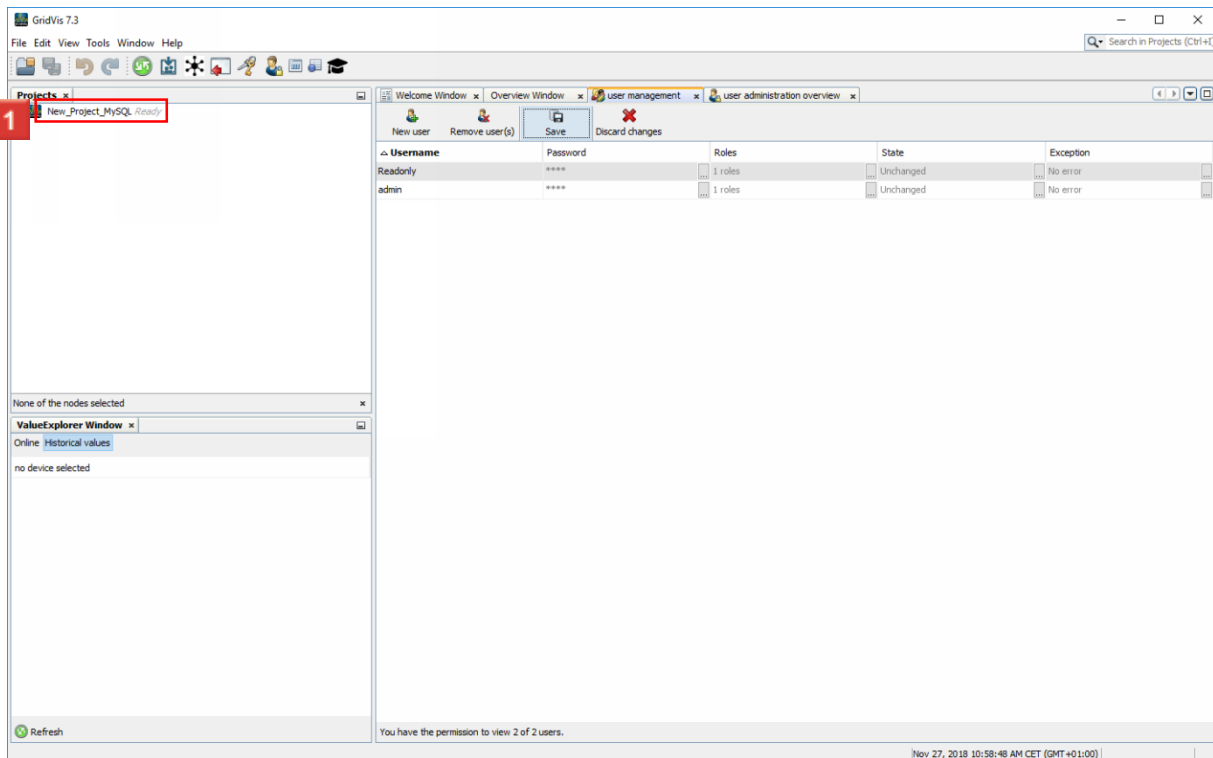
The screenshot shows the GridVis 7.3 user management interface. The 'Save' button is highlighted with a red box and a red '1' next to it. The interface displays a table of users with the following columns: Username, Password, Roles, State, and Exception. The 'admin' user is listed with 1 role and a 'Changed' state.

Username	Password	Roles	State	Exception
Readonly	****	1 roles	New	No error
admin	****	1 roles	Changed	No error

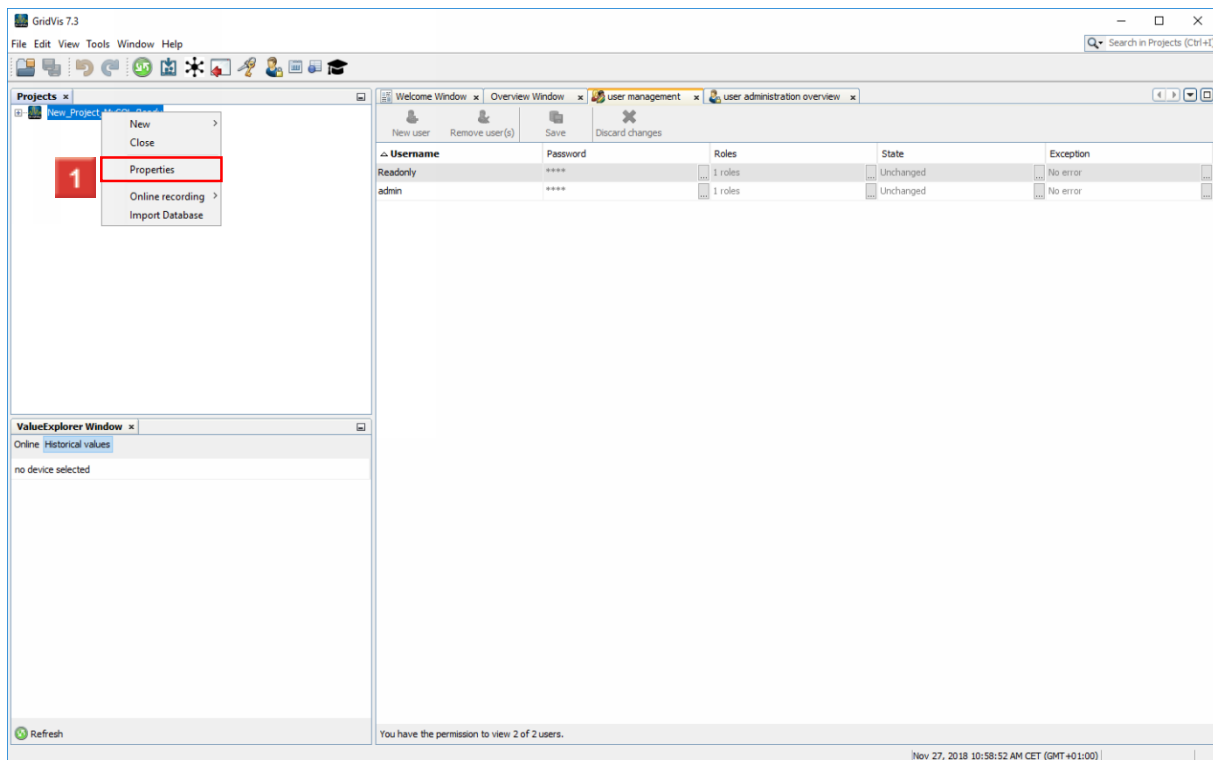
**1** Click the **Save** button.



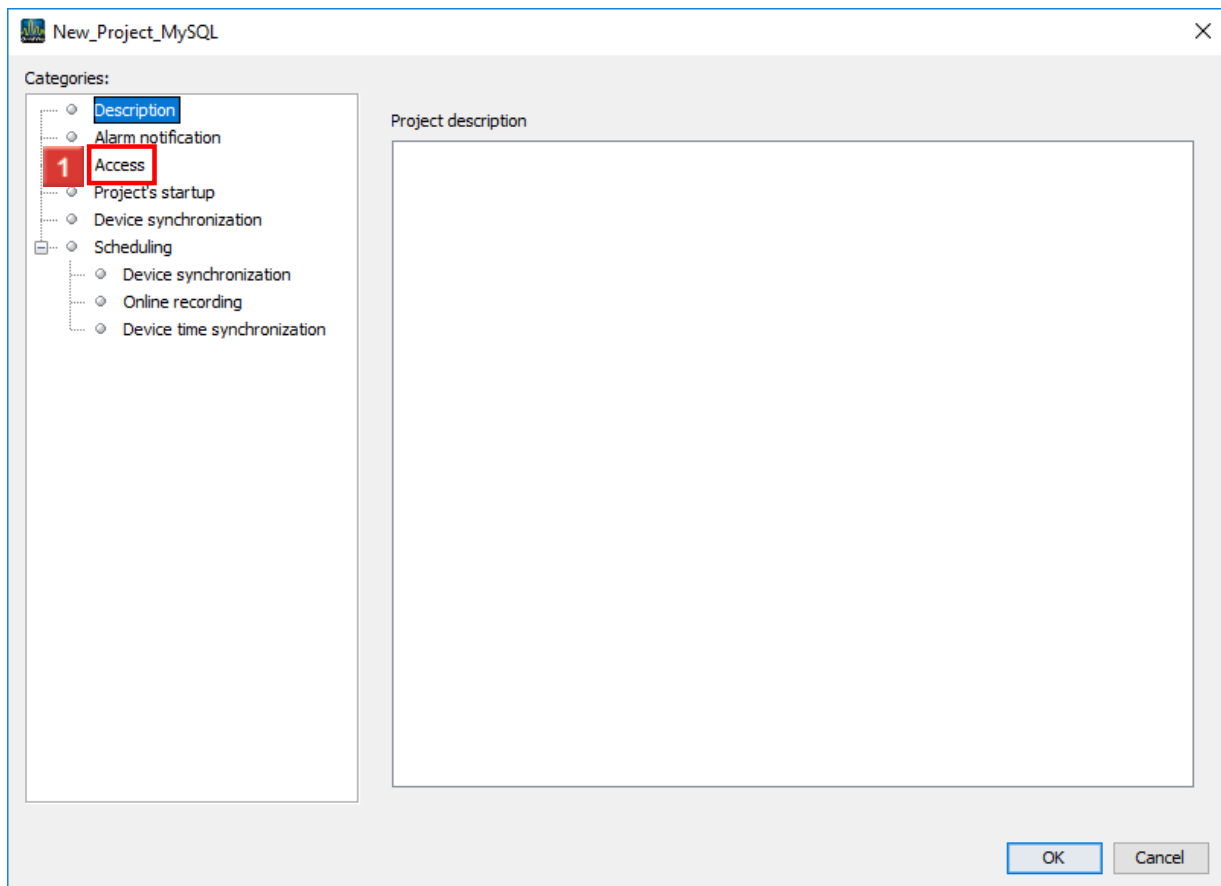
## 5 Connect project to user administration



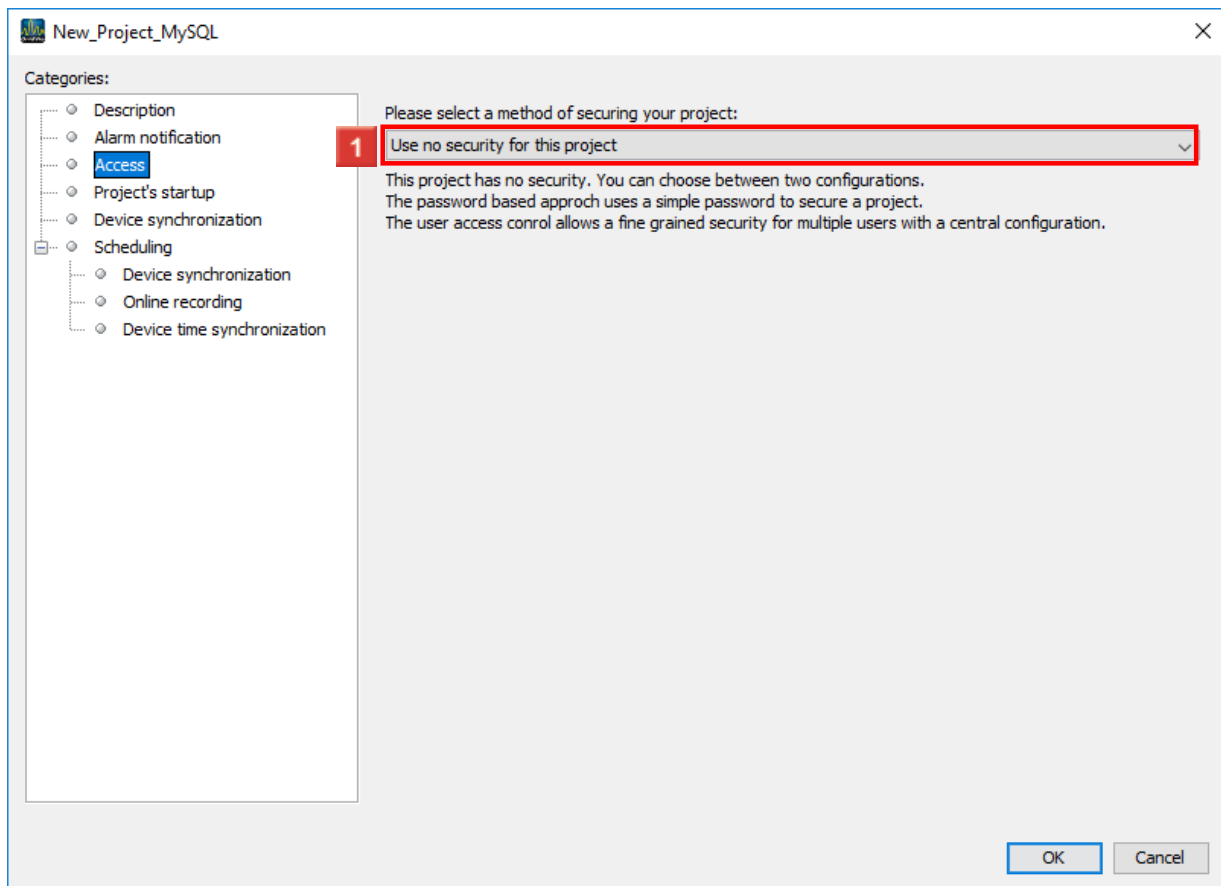
1 Right-click: your project.



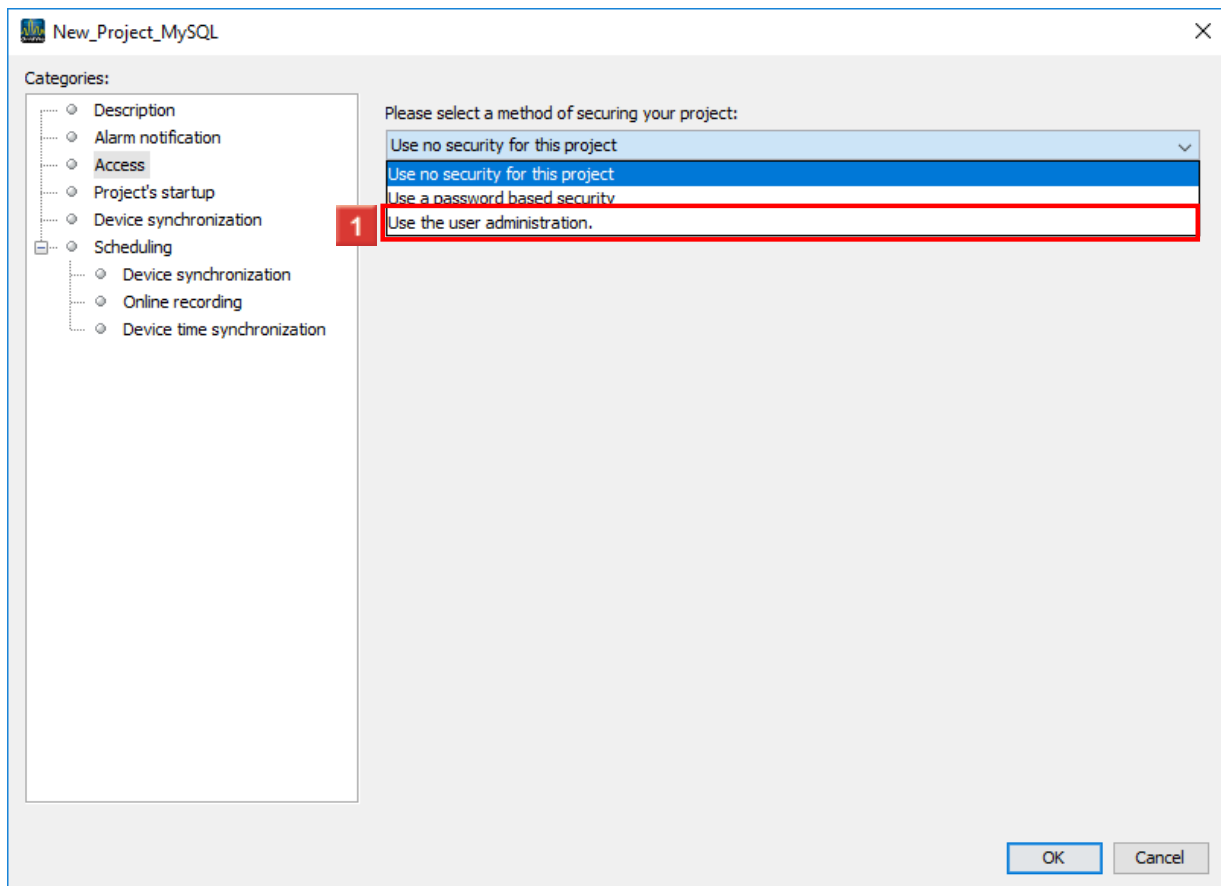
1 Click the **Properties** list item.



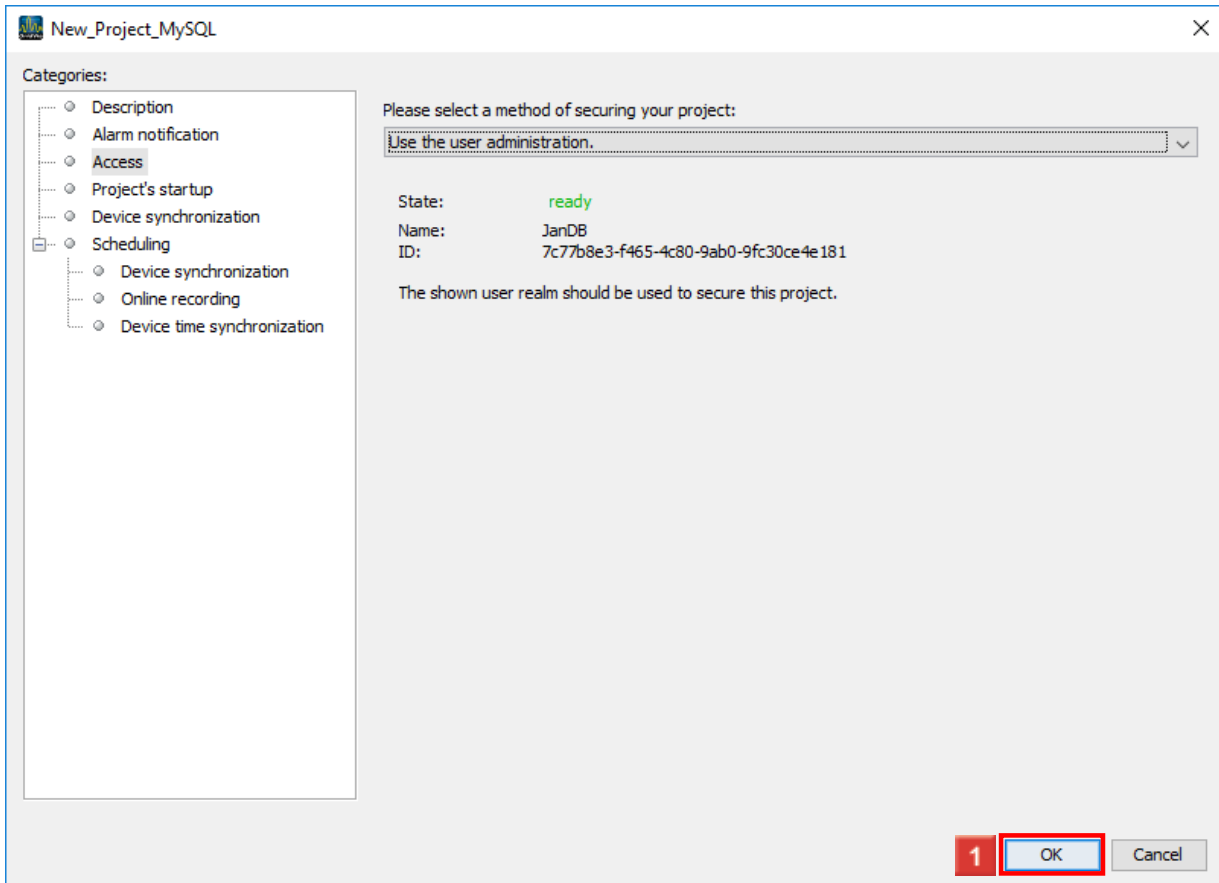
**1** Click the **Access** tree item.



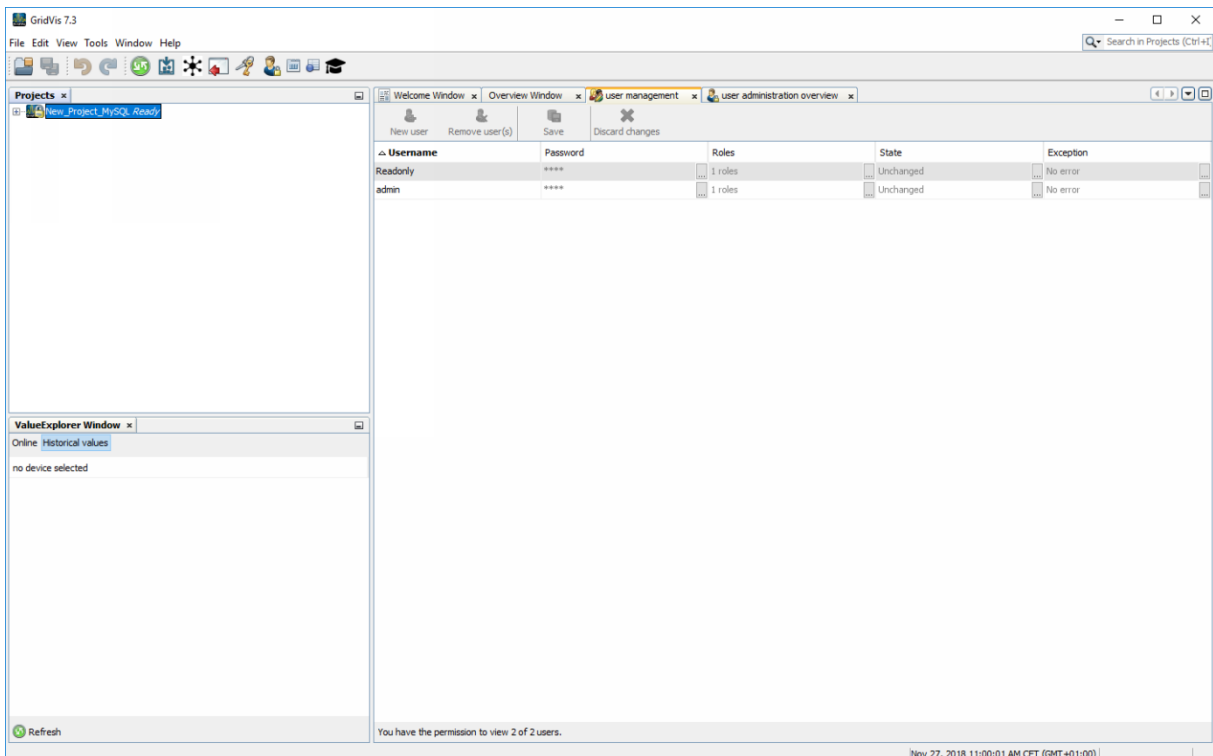
1 Click the dropdown button.



**1** Click the **Use the user administration** list item.



1 Click the **OK** button.



## 6 Summary

Please enter your text here.

User directory

A simple user directory with 2 users was created.

This can be extended according to your own ideas and the users can be provided with individual rights.

Good to know

The created user directories are automatically valid for the login to the GridVis Service.