

# Manual

Create new project (mysql)



# Table of Contents

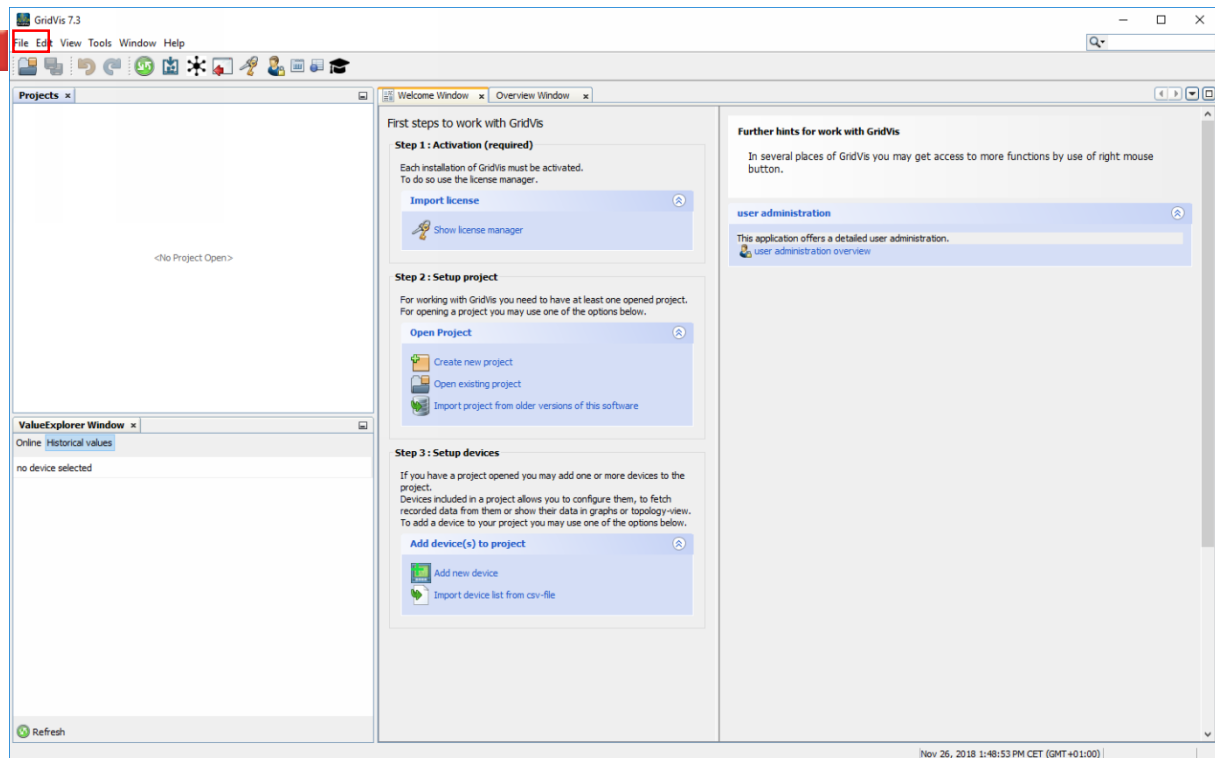
1 GRIDVIS 7.3 .....2

These instructions show you how to create a new GridVis project in the Software GridVis desktop, using a MySQL database.

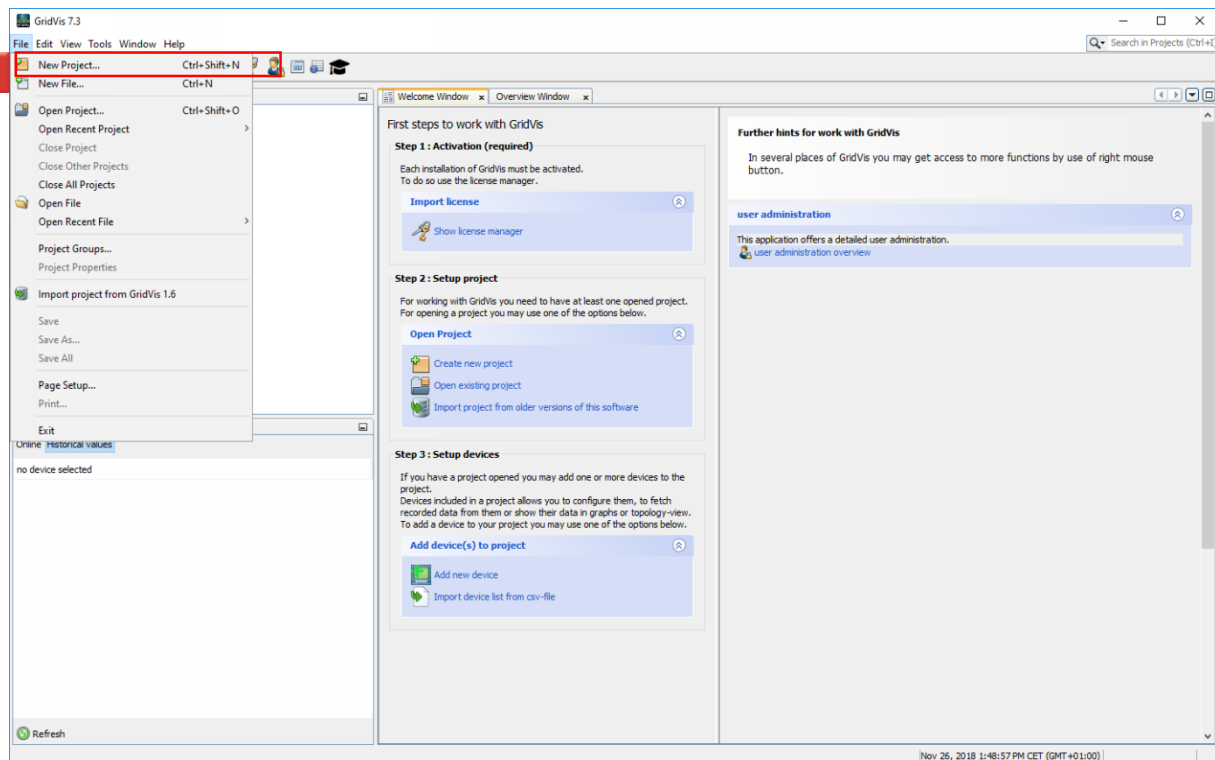
#### Content

- - Creating a GridVis project with a MySQL database
- 
-

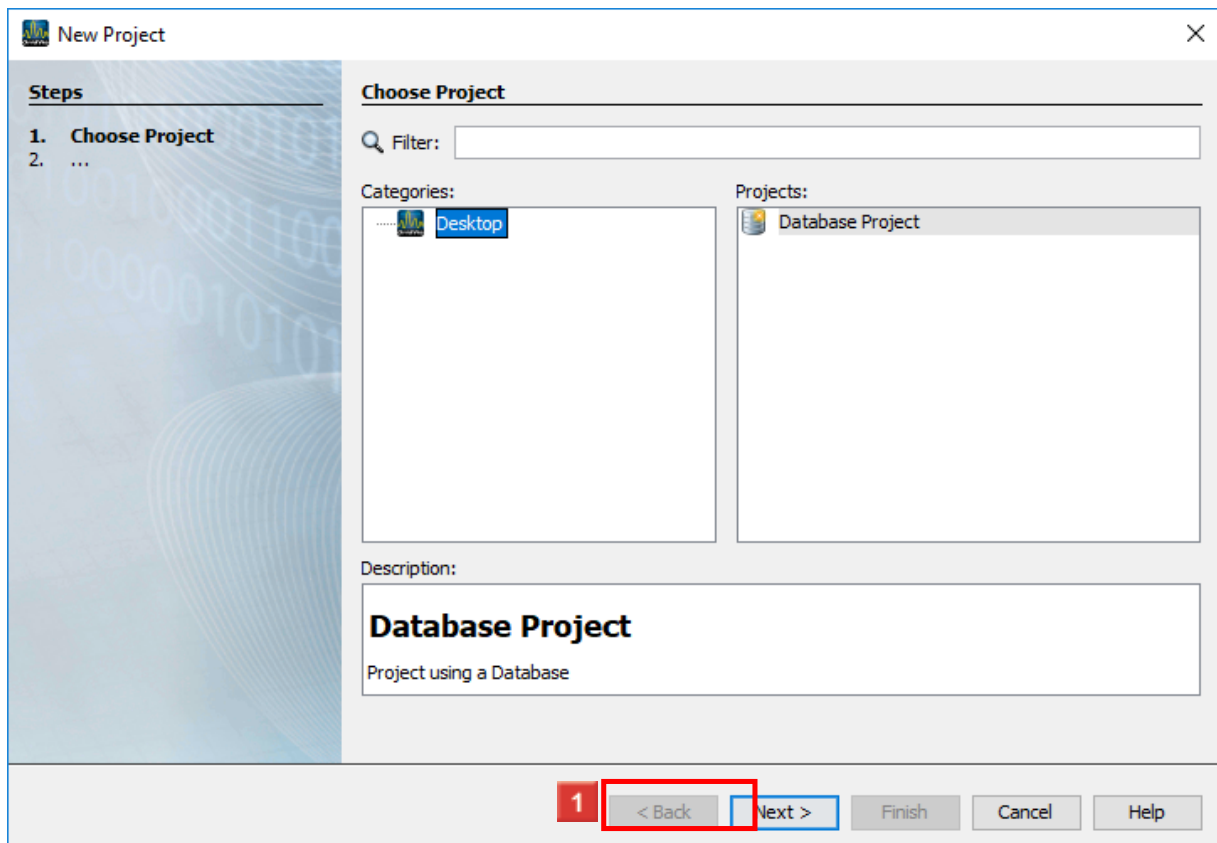
# 1 GridVis 7.3



1 Click the **File** button.



1 Click the **New Project** list item.



**1** Click the **Next** button.

**2** Enter a project name and project path in the input fields. Deactivate the **Use the default database (Janitza DB)** checkbox to use a different type of database.

**Steps**

1. Choose Project
- 2. Project location**
3. Database configuration

**Project location**

Project name:

Project location:

Project folder:

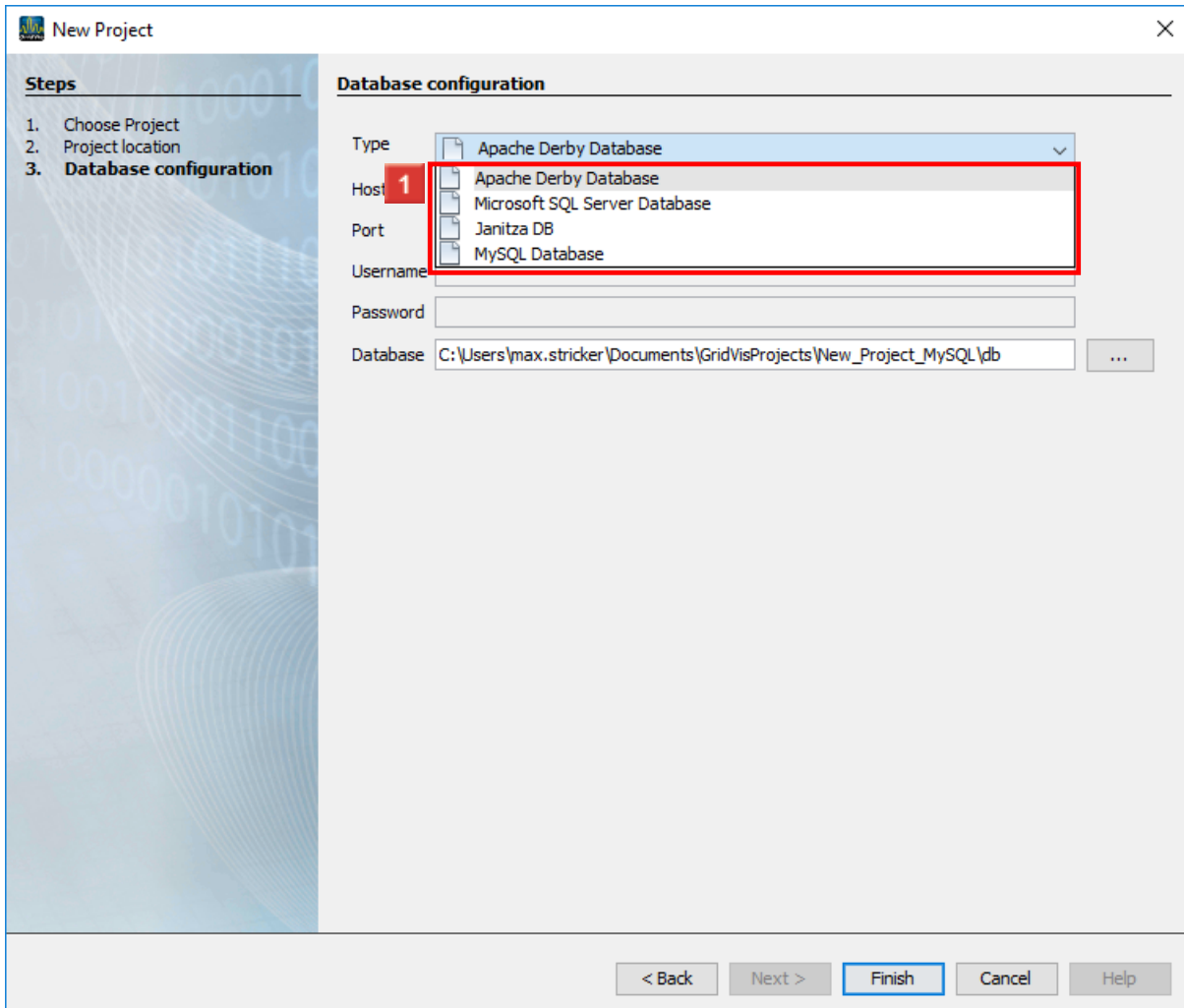
Use default database (Janitza DB)

< Back **1** Next > Finish Cancel Help

**1** Click the **Next** button.

The screenshot shows a 'New Project' dialog box with a 'Steps' sidebar on the left and a 'Database configuration' section on the right. The 'Steps' sidebar lists: 1. Choose Project, 2. Project location, and 3. Database configuration (highlighted). The 'Database configuration' section contains the following fields: 'Type' (a dropdown menu with 'Apache Derby Database' selected and a red box around it and a red '1' next to the label), 'Host', 'Port', 'Username', 'Password', and 'Database' (with the path 'C:\Users\max.striker\Documents\GridVisProjects\New\_Project\_MySQL\db' and a browse button '...'). At the bottom of the dialog are buttons for '< Back', 'Next >', 'Finish' (highlighted with a blue border), 'Cancel', and 'Help'.

**1** Click the **Type** dropdown button.



- 1 Select the corresponding database type from the list.
- 2 After you have entered the access data, click the **Finish** button.



- 1 Click the **Yes** button.



