

Manual

Project import and export



Table of Contents

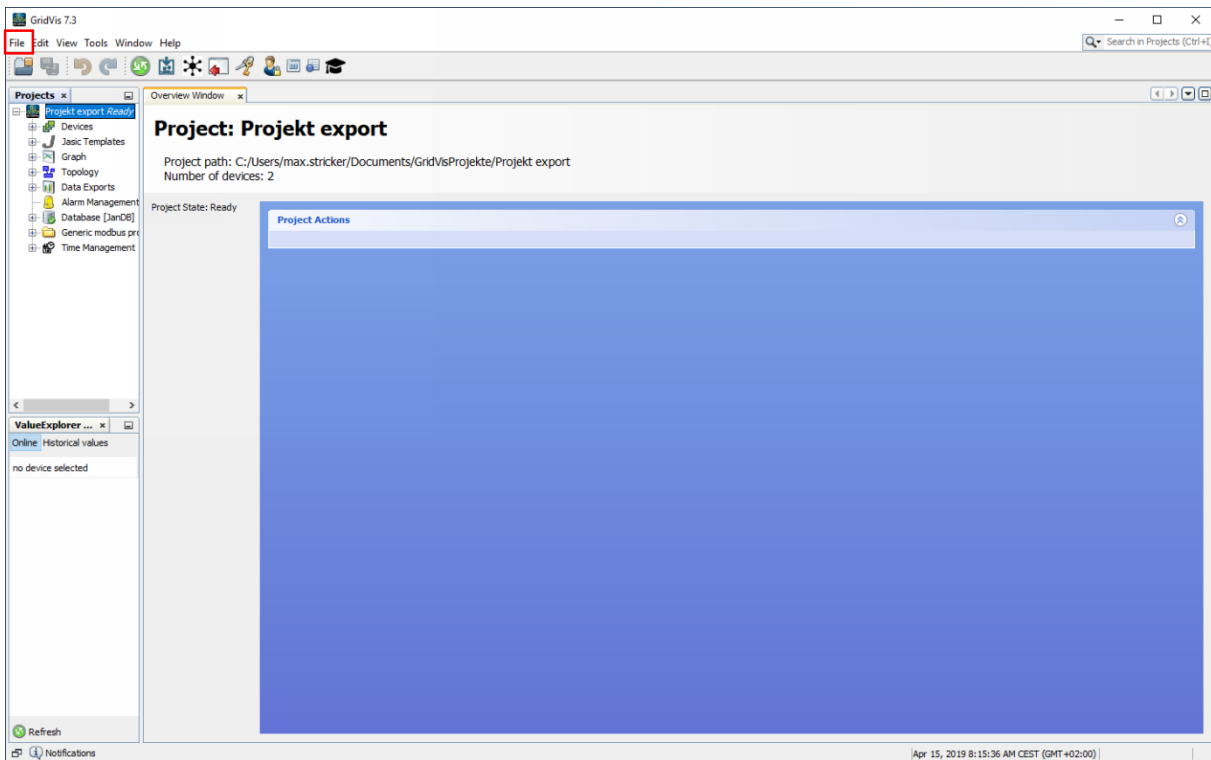
- 1 EXPORTING THE PROJECT.....2
- 2 IMPORTING THE PROJECT.....8

These instructions will teach you how to export a GridVis Desktop project and import it into another GridVis instance.

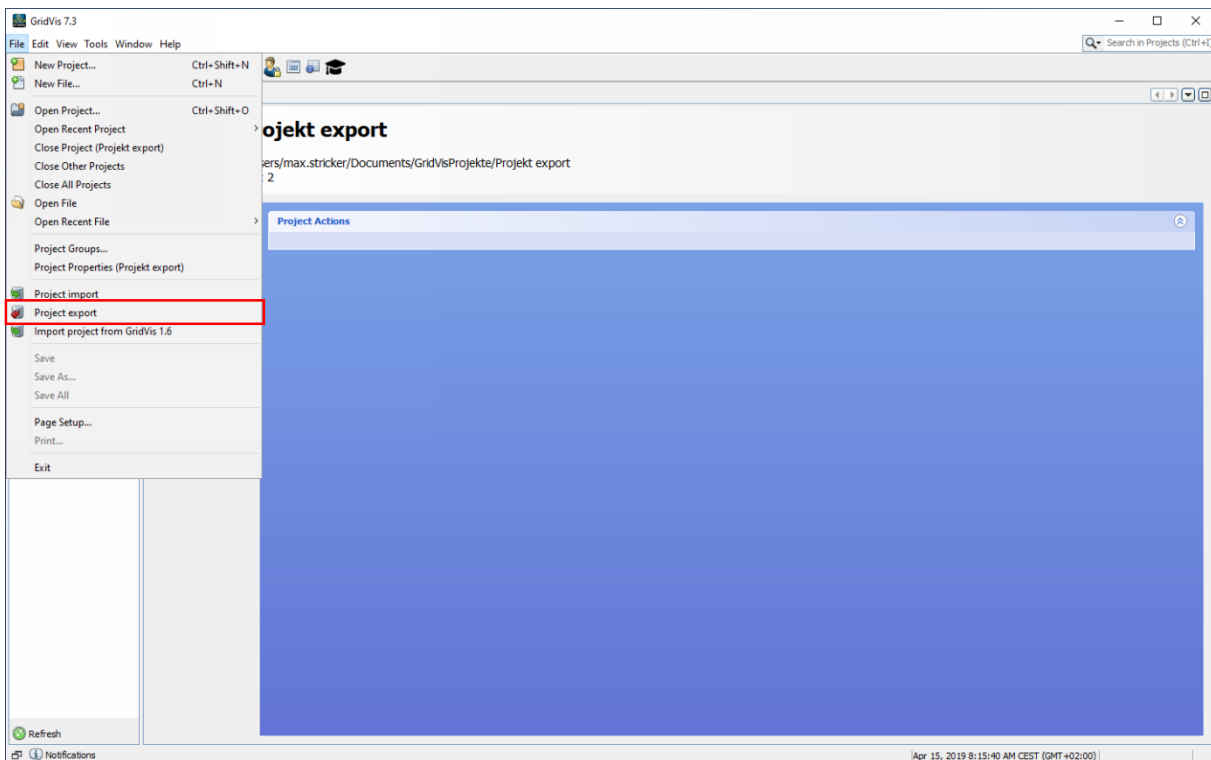
Content

- Exporting the project
- Importing the project
-

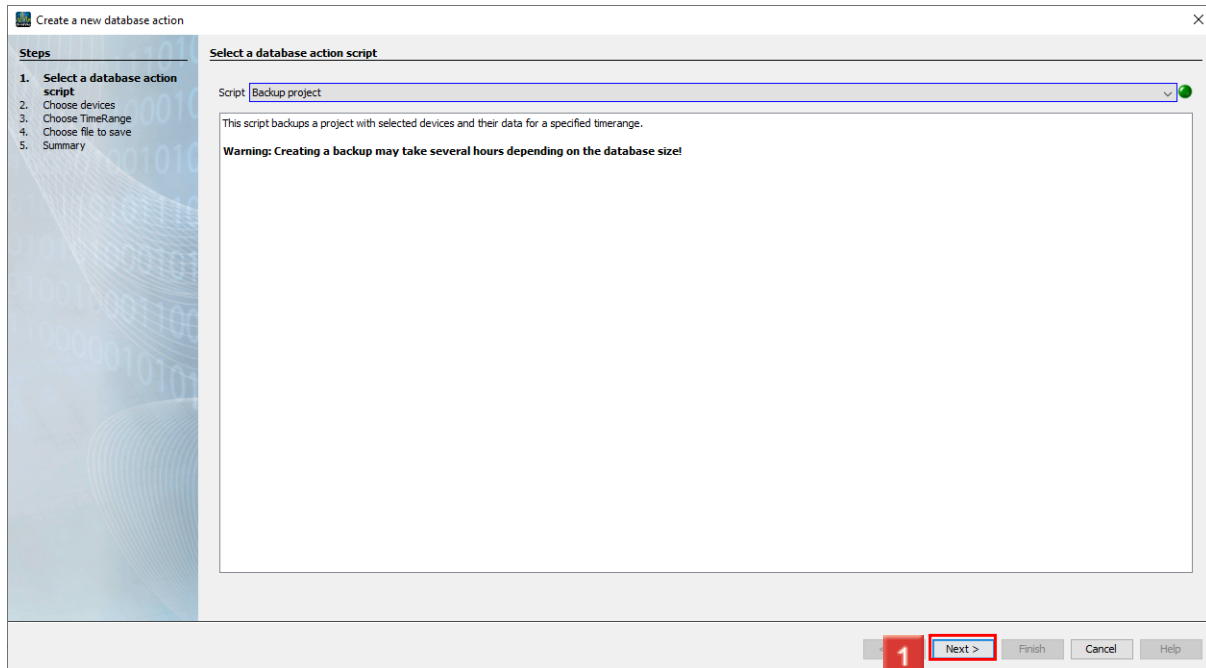
1 Exporting the project



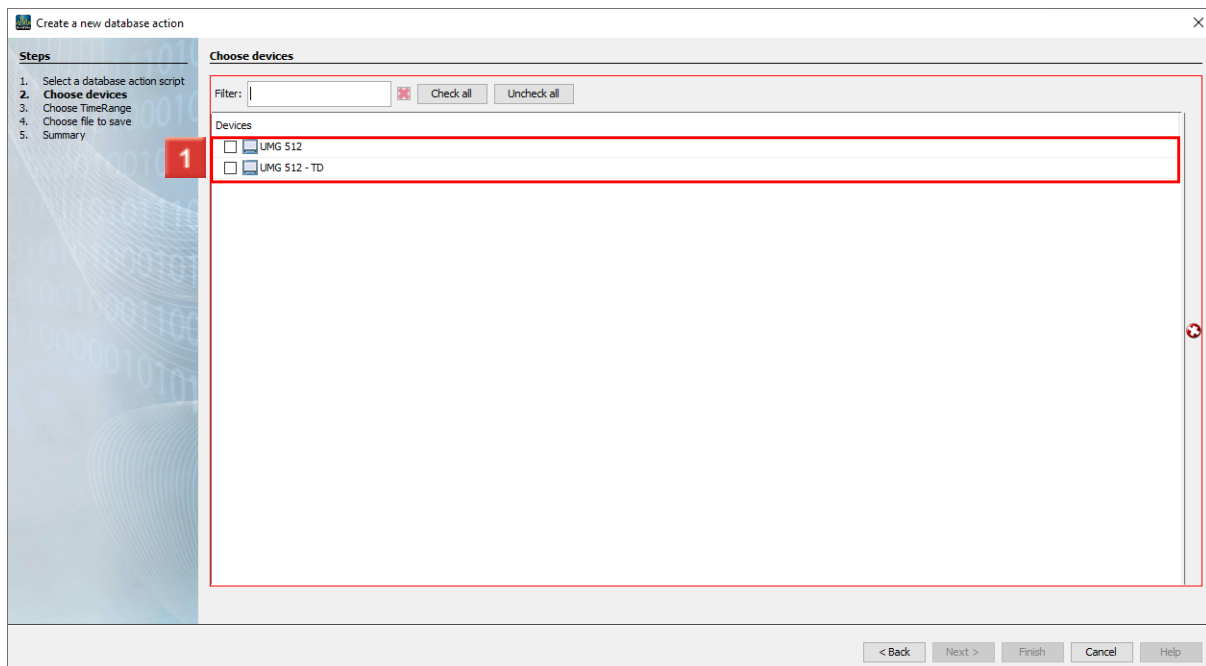
1 Click the **File** button.



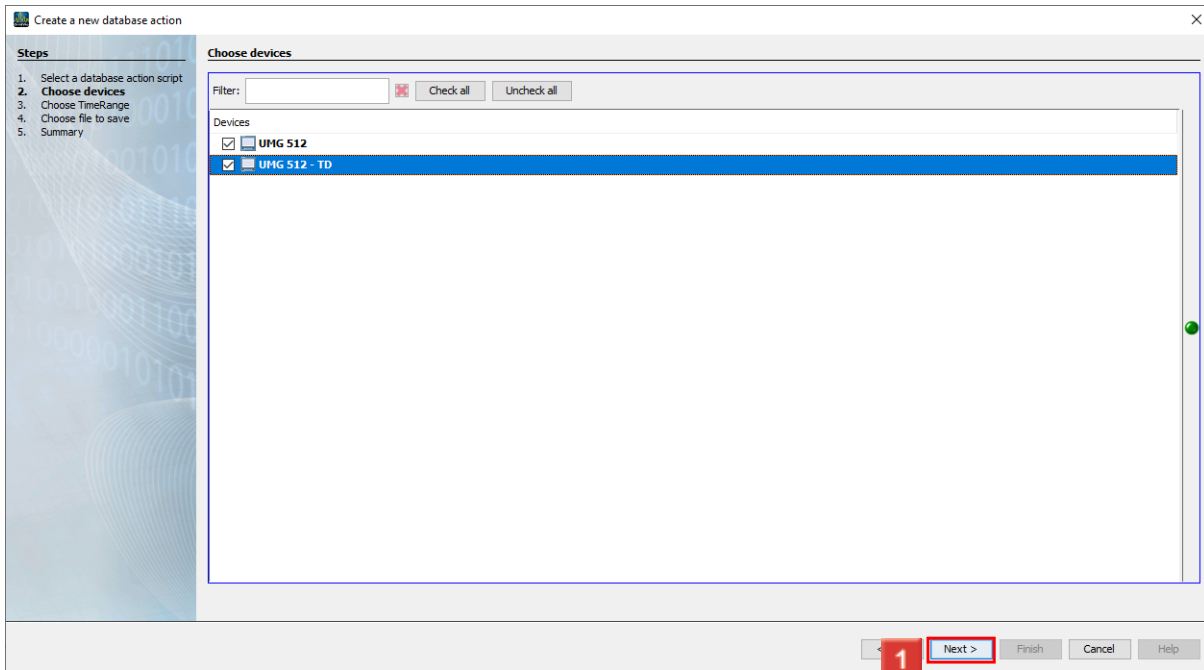
1 Click the **Project export** list item.



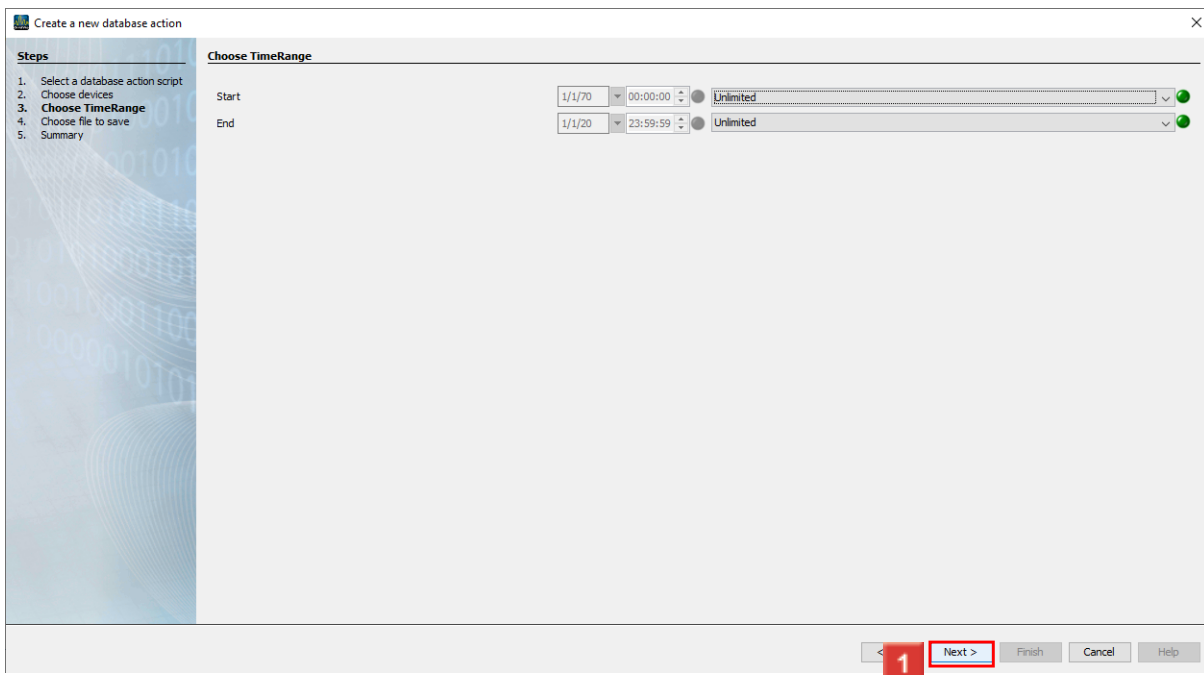
1 Click the **Next** button.



1 Select the devices to be included in the export using the checkbox.

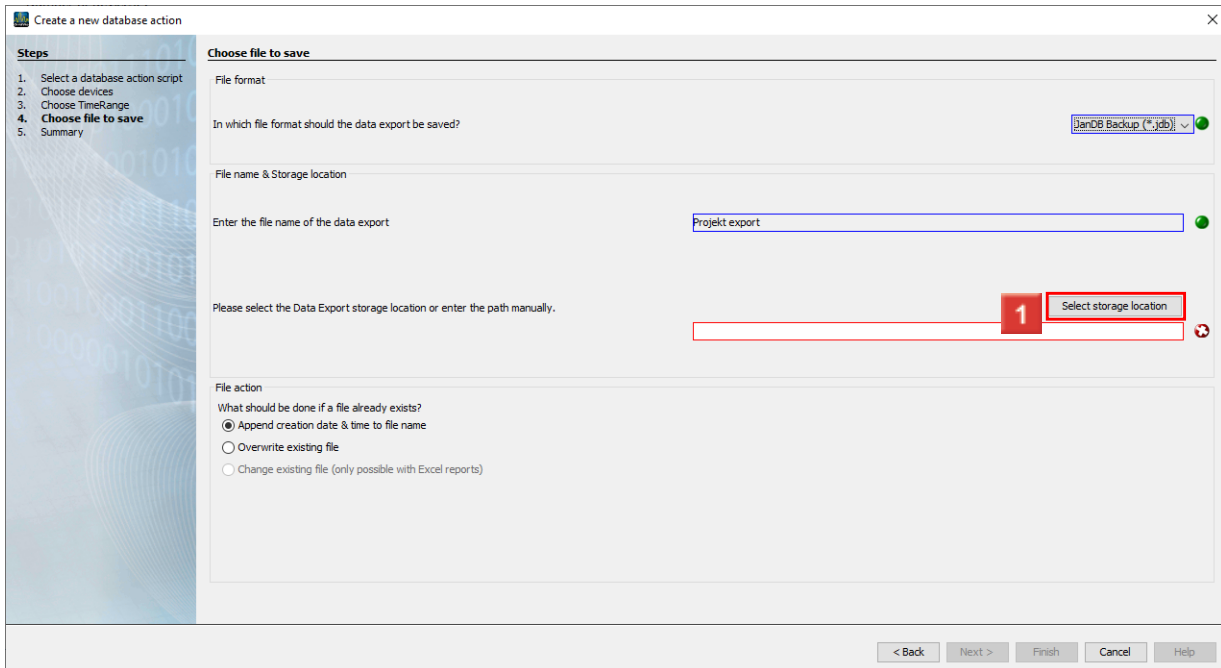


1 Click the **Next** button.

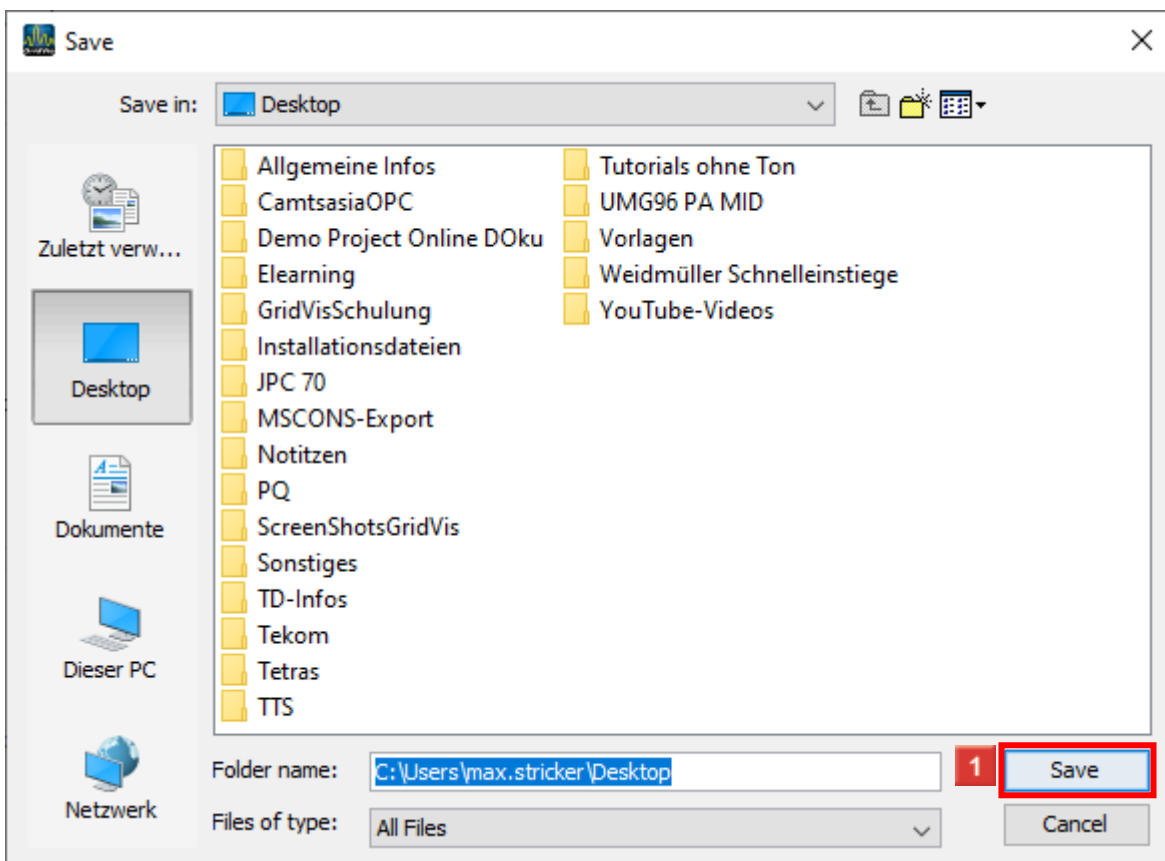


1 In this step, you can select over which period of the time the measurement data will be integrated in the export.

Click the **Next** button.



1 Click the **Select storage location** button.



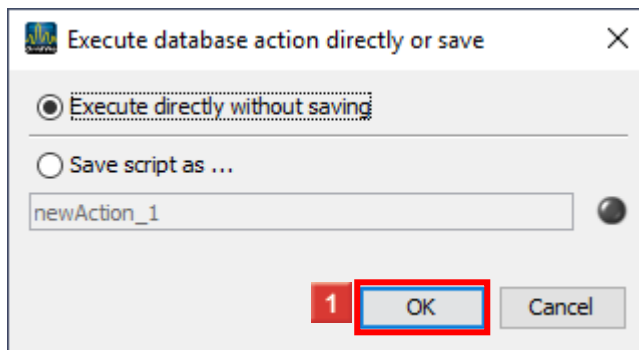
1 Select a location where the file is to be stored.
Click the **Save** button.

The screenshot shows the 'Create a new database action' dialog box, specifically the 'Choose file to save' step. The 'Steps' list on the left indicates the current step is 4. The 'File format' section has a dropdown menu set to 'JanDB Backup (*.jdb)'. The 'File name & Storage location' section has a text box for the file name containing 'Projekt export' and a 'Select storage location' button next to a text box containing the path 'C:\Users\max.striker\Desktop'. The 'File action' section has three radio buttons: 'Append creation date & time to file name' (selected), 'Overwrite existing file', and 'Change existing file (only possible with Excel reports)'. At the bottom right, the 'Next >' button is highlighted with a red box and a red '1'.

1 Click the **Next** button.

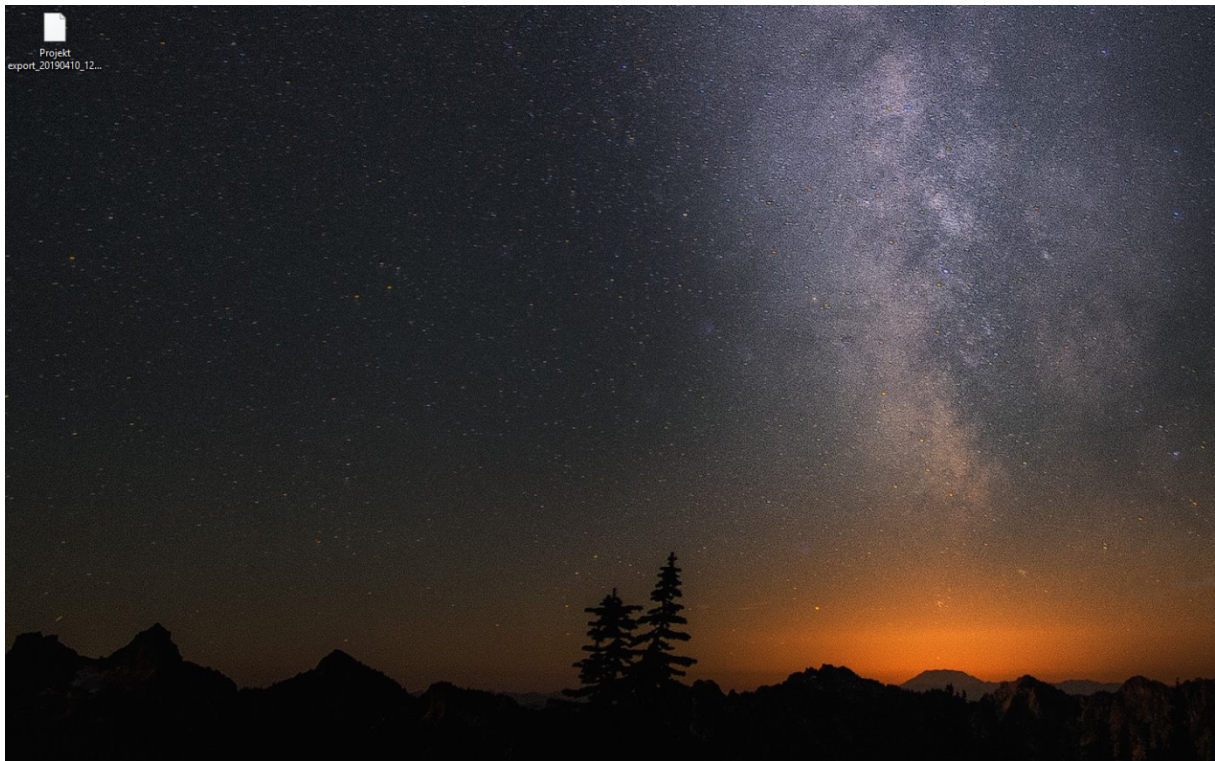
The screenshot shows the 'Create a new database action' dialog box, specifically the 'Summary' step. The 'Steps' list on the left indicates the current step is 5. The 'Summary' section shows a list of items: 'Script: Backup project' and '2 selected devices (2x UMG 512)'. At the bottom right, the 'Finish' button is highlighted with a red box and a red '1'.

1 Click the **Finish** button.

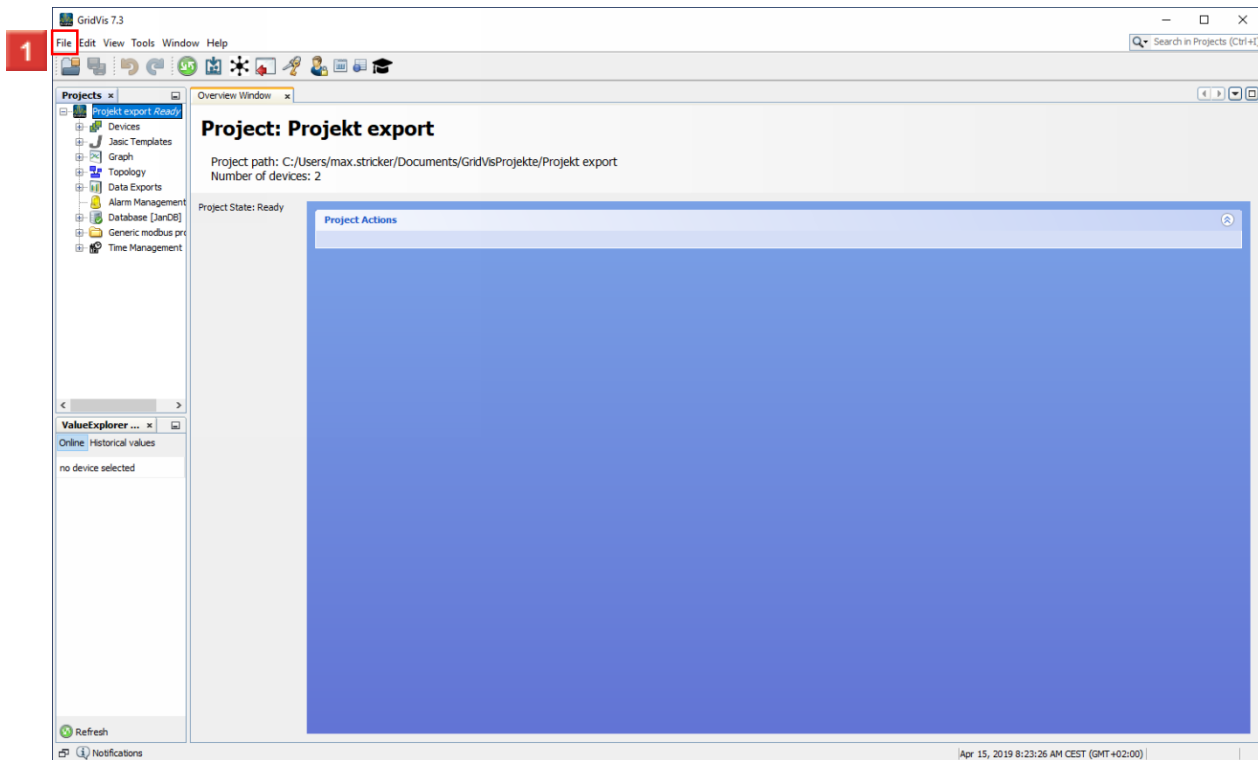


1 Click the **OK** button.

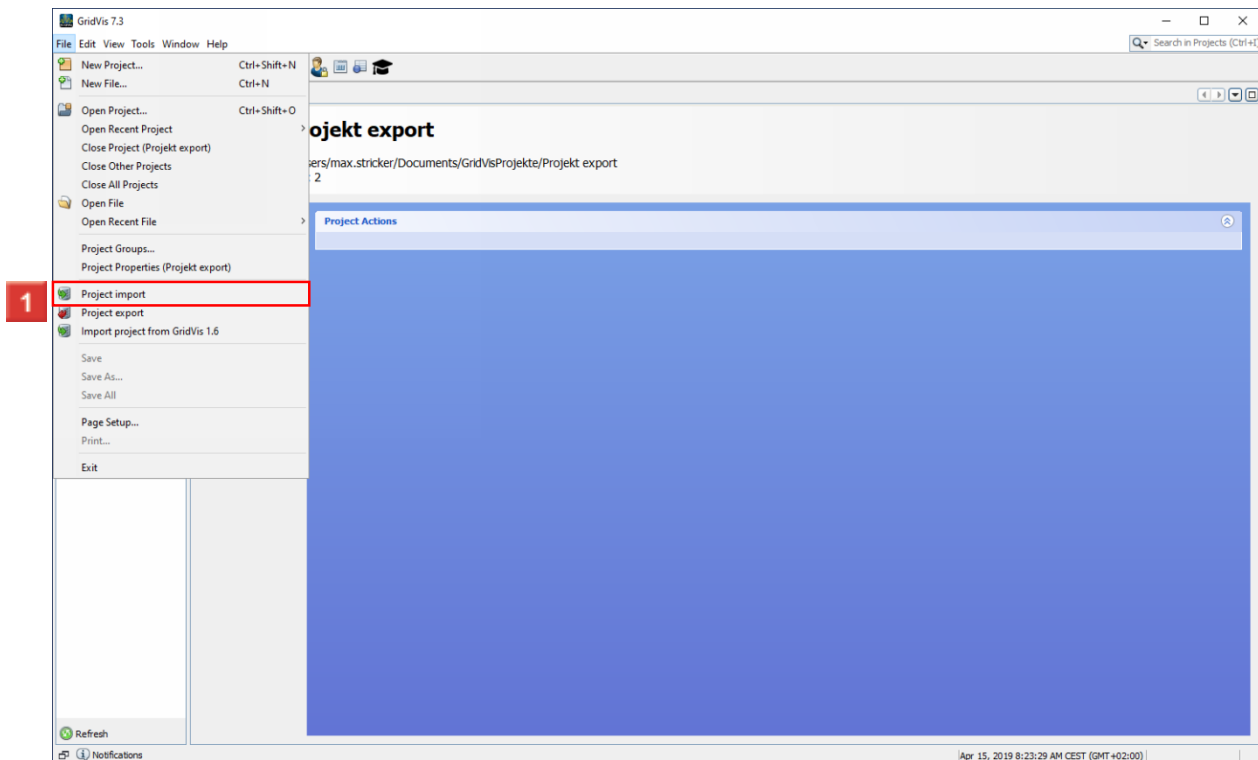
- i You have the option of saving the action as a script.
- i You can then execute the export with the selected settings faster in the future.
- i To do so, activate the radio button **Save script under...**



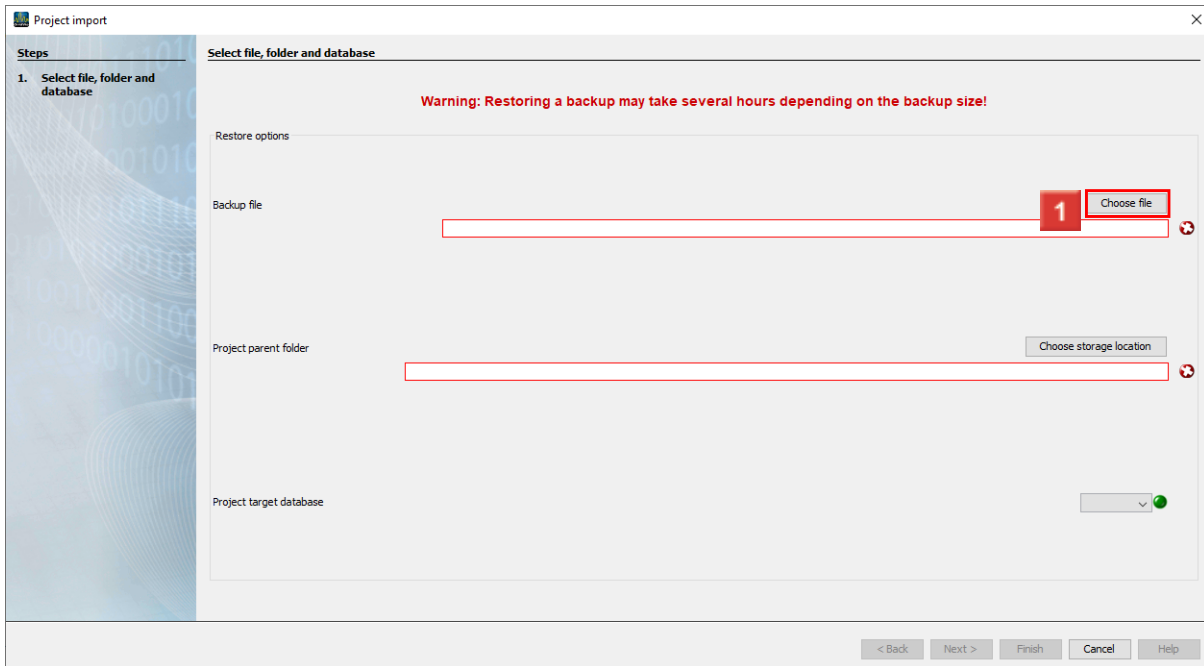
2 Importing the project



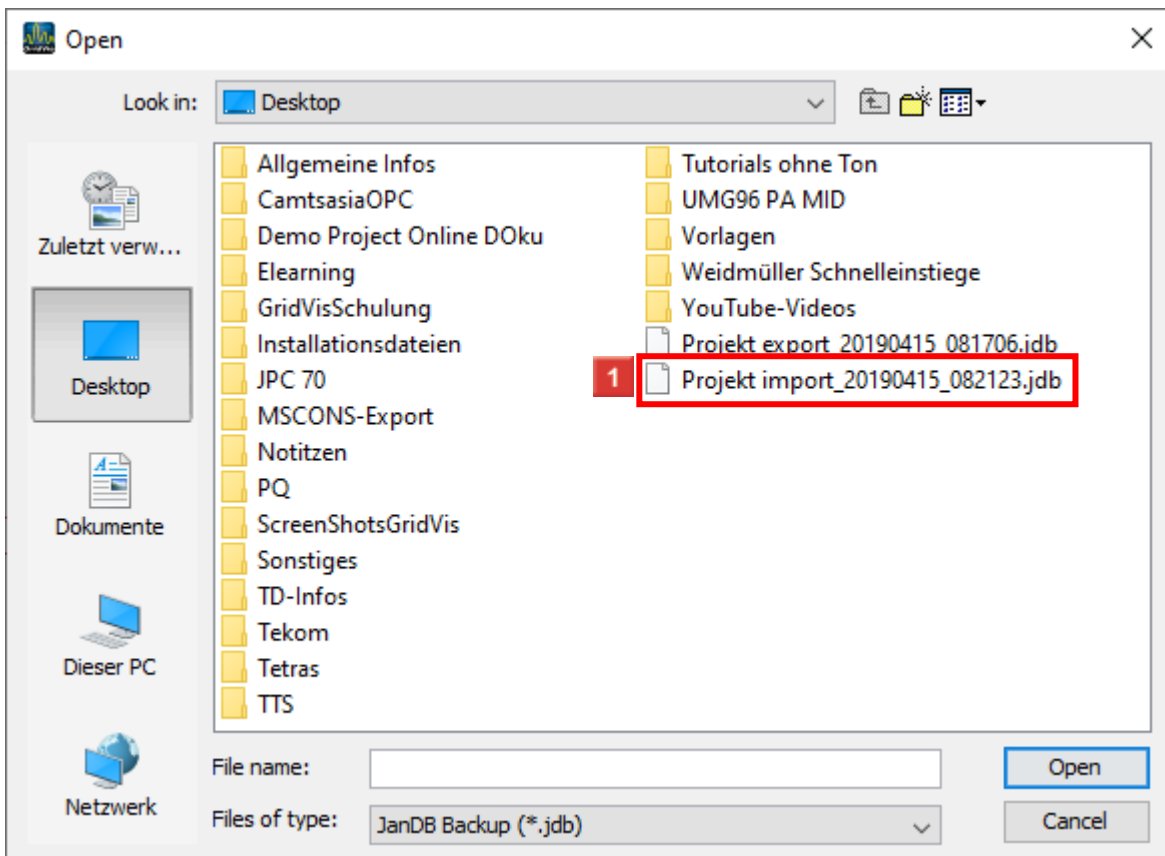
1 Click the **File** button.



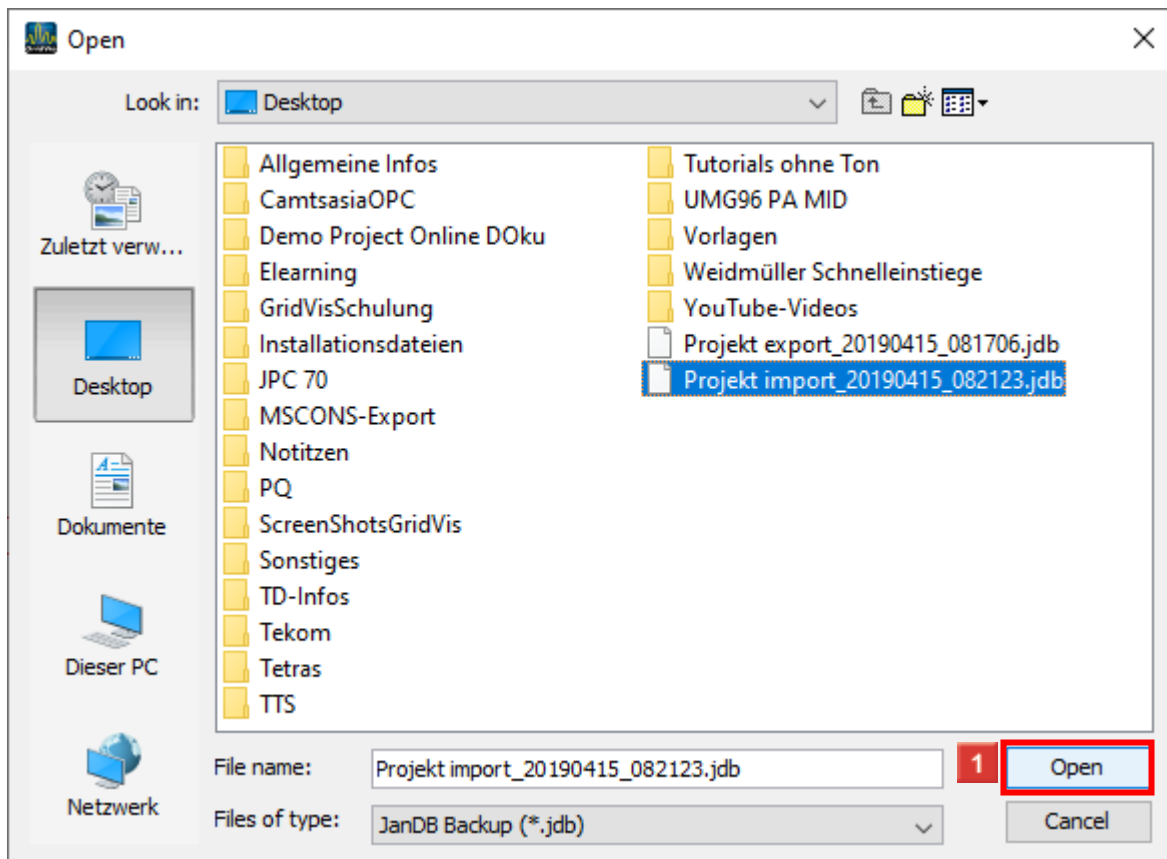
1 Click the **Project import** list item.



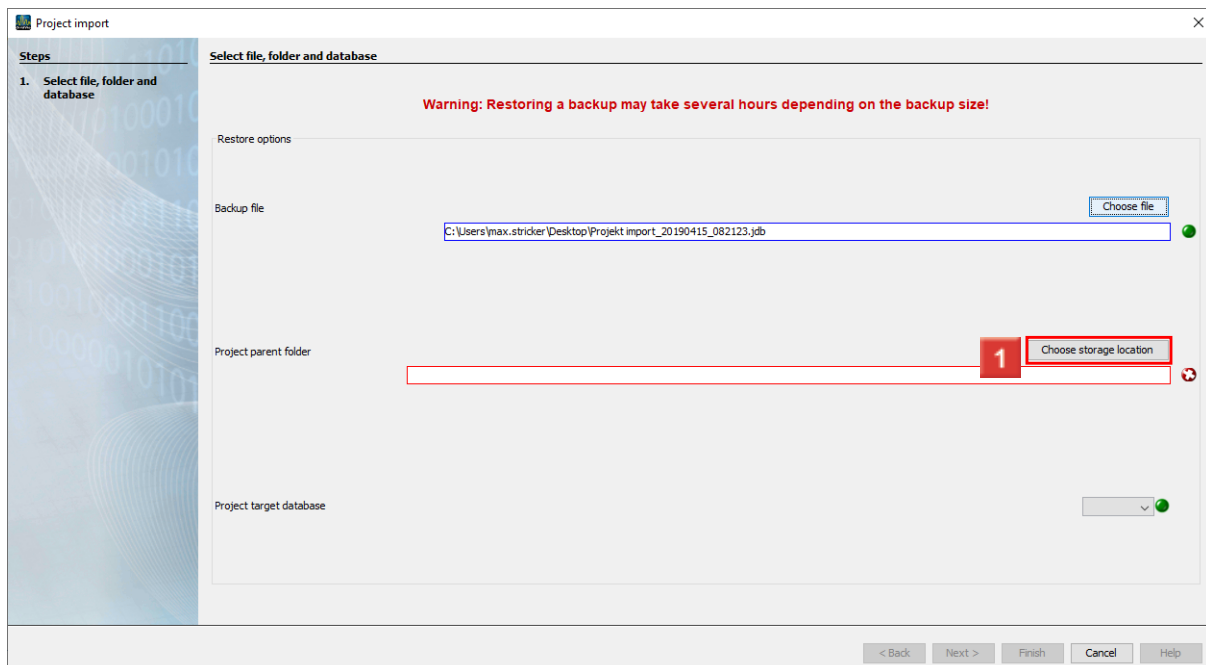
1 Click the **Choose file** button.



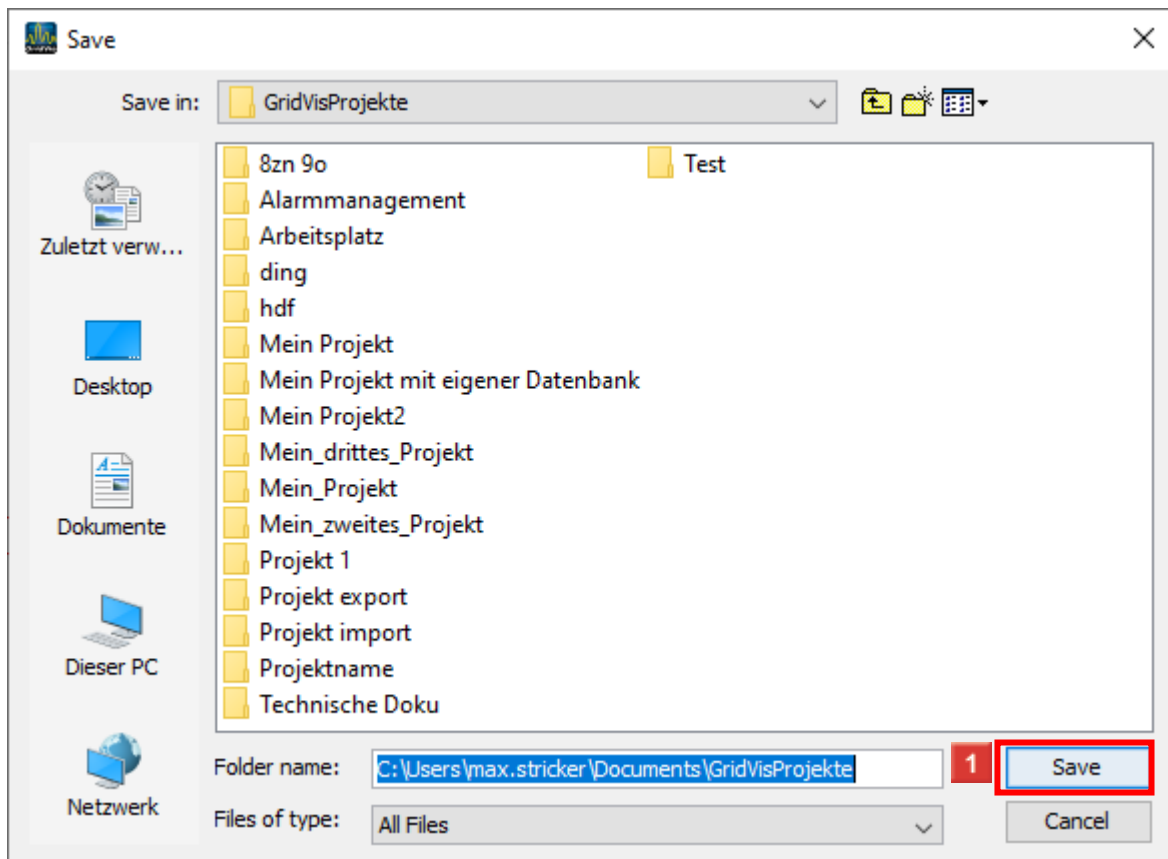
1 Select the respective project file.



1 Click the **Open** button.

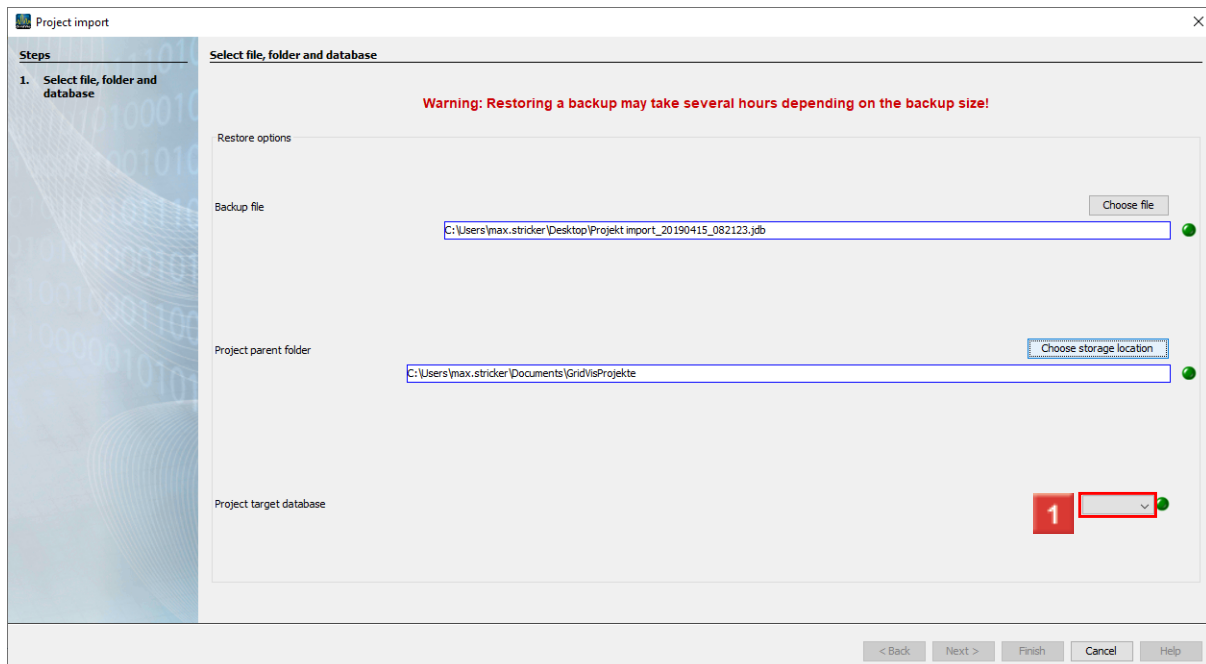


1 Click the **Choose storage location** button.



1 Select a storage location for the project files.

Click the **Save** button.



1 Click the **Project target database** dropdown button.

Project import

Steps

1. Select file, folder and database

Select file, folder and database

Warning: Restoring a backup may take several hours depending on the backup size!

Restore options

Backup file: C:\Users\max.stricker\Desktop\Projekt import_20190415_082123.job

Project parent folder: C:\Users\max.stricker\Documents\GridVisProjekte

Project target database: Janitza DB

< Back Next > Finish Cancel Help

1 Select the desired data base option from the list.

Project import

Steps

1. Select file, folder and database

Select file, folder and database

Warning: Restoring a backup may take several hours depending on the backup size!

Restore options

Backup file: C:\Users\max.stricker\Desktop\Projekt import_20190415_082123.job

Project parent folder: C:\Users\max.stricker\Documents\GridVisProjekte

Project target database: Janitza DB

< Back Next > Finish Cancel Help

1 Click the **Finish** button.

